



UNIFYING STRENGTH, RESTORING HOP

PAVING THE WAY IN THE
FIGHT AGAINST CANCER



Annual Report
2023



SINGAPORE CANCER SOCIETY

Singapore Cancer Society (SCS) was established in 1964 and has been actively serving the community for more than 59 years. SCS was registered as a society in 1984 and accorded IPC (Institutions of a Public Character) status as a charity in 1995 by the Ministry of Health (MOH).

SCS is a member of the National Council of Social Service (NCSS), a founding member of the Singapore Hospice Council (SHC), and a member of the Union of International Cancer Control (UICC). Being self-funded, the Society is dependent on donations to provide quality services to needy cancer patients, their families, and members of the public.

OUR VISION

To be Singapore's leading Charity in the fight for a cancer-free community.



OUR MISSION

To Minimise Cancer and Maximise Lives through effective programmes.



STRATEGIC THRUSTS

Reduce Cancer Incidence,
Increase Survivor Rate,
Improve Quality of Life,
Greater Community Action.



OUR CORE VALUES

- Stewardship:** We make the best use of our resources, time, talents and funds to fulfil our mission.
- Perseverance:** We shall overcome all challenges to minimise cancer and maximise lives.
- Integrity:** We strive to be honest, ethical and fair in all we do.
- Respect:** We will respect everyone and serve with dignity, care and concern.
- I:** I embrace the SCS SPIRIT.
- Teamwork:** We forge ahead together as one.

CONTENTS

05	Patron of SCS: President Tharman Shanmugaratnam	35	Strategic Thrust 3: Improve Quality of Life
06	Chairman and CEO's Message	49	Strategic Thrust 4: Rallying Greater Community Action
08	SCS Council Members and Management	57	Driving Cancer Research
13	Year in Review Highlights	62	People Matters
16	Stories of Courage and Hope	63	Corporate Governance
20	Strategic Thrust 1: Reduce Cancer Incidence	67	Governance Evaluation Checklist
29	Strategic Thrust 2: Increase Survivor Rate	69	Financial Overview
		70	Acknowledgements



“UNIFYING STRENGTH, RESTORING HOPE.”

These words are our promise to the cancer community. A rallying cry to support all affected by cancer, so that no one will face this disease alone.

Beyond mere reflection, this report stands as a testament to the triumph of the human spirit. “Strength” and “Hope” aren’t just words; they stand as robust pillars upon which we construct the foundation of brighter future, brick by brick. Join us on this journey where unity fosters the strength to confront challenges and hope instills the power to overcome.

Together, resolute and ready, we stand committed to making a difference, firmly believing that no one should navigate the path of cancer without the support of a united community.

PATRON OF SCS: PRESIDENT THARMAN SHANMUGARATNAM

“ Too many of us still lose our loved ones and friends to this disease, that is why I want to support every effort, to prevent cancer and to bring hope to those battling cancer. ”

- President Tharman Shanmugaratnam,
World Cancer Day and Singapore Cancer Society
60th Anniversary Message

On 8 November 2023, we are honoured that the President of the Republic of Singapore, Mr Tharman Shanmugaratnam accepted the invitation to be the Patron of the Singapore Cancer Society (SCS), leading the collective fight against cancer.

President Tharman's support is a testament to the national and community solidarity needed to overcome cancer, the number one cause of death in Singapore.

SCS looks forward to President Tharman's leadership in uniting Singaporeans to take steps to prevent cancer and bring hope to those affected by the disease. We are profoundly grateful for this support. Together, may we continue to minimise cancer and maximise lives.

PRESIDENT THARMAN SHANMUGARATNAM



President Tharman
Shanmugaratnam

Patron

CHAIRMAN AND CEO'S MESSAGE

The Singapore Cancer Society (SCS) moved full steam ahead with our plans to deepen our collaborations with the key cancer centres in Singapore (National Cancer Centre Singapore and National University Cancer Institute, Singapore) and recognising our critical role in the healthcare ecosystem to ensure seamless and integrated care for the cancer community.

Among other things, we moved to a new home to better serve the cancer community. We launched brand new centres for rehabilitation and survivorship, and inked partnerships with leading cancer bodies, ensuring Singaporeans have access to integrated care and support services.

Most importantly, we doubled down on our vision, to be Singapore's leading charity in the fight for a cancer-free community. This was achieved through the launch of our revitalised strategic plan which streamlines SCS's efforts to four key thrusts: (i) Reducing cancer incidence, (ii) Increasing cancer survivor rates, (iii) Improving the quality of life, (iv) Driving greater community action. This plan, put into action in 2023, will place SCS in a stronger position to achieve our mission to "Minimise Cancer and Maximise Lives."

This year's Annual Report, "Unifying Strength, Restoring Hope" captures the spirit of our bold journey. It reflects how, united with our staff and volunteers, the cancer community, healthcare partners, and the public, we rode the waves of change to fight cancer. In doing so, we have ignited hope for countless individuals and families.

BUILDING TRUST, ACHIEVING PURPOSE

In a stirring endorsement of our work, SCS is honoured to receive the prestigious Charity Governance Award in November 2023. Bestowed by the Charity Council, this is the highest honour for charities, and it demonstrates exceptional standards in governance. In addition, SCS also received the Charity Transparency Award for the third year running.



Lee Meng Tat
Chairman



Albert Ching
Chief Executive Officer

These awards reaffirm our belief that great work comes with upholding the highest standards of integrity. We will continue to uphold the trust placed in us by our donors, beneficiaries, partners, and members of the public.

SCS ensures full compliance with the revised code and Environmental, Social and Governance (ESG) requirements. To ensure ongoing accountability an ESG task force was formed to coordinate SCS's ESG efforts systematically, align them with the organisation's strategic plan and operations, as well as stay abreast of governance guidelines.

DEEPENING PARTNERSHIPS TO BRIDGE CARE GAPS

2023 saw us establishing pivotal partnerships that expanded SCS's reach, improved access to programmes and services, and created a seamless continuum of care for the cancer community.

One milestone was the relocation of SCS's headquarters to the new National Cancer Centre Singapore (NCCS) building in March 2023. This move gives cancer patients, survivors, and caregivers unparalleled access to cancer support. Whether it is treatment, rehabilitation, or welfare aid, individuals can now receive

such services all under one roof, creating a seamless continuum of care.

The co-location also deepens our synergy with NCCS, whom we have pledged to work closer with in the coming years. In May 2023, SCS established a community rehabilitation centre in the NCCS building. This is another step toward giving patients an integrated experience as patients transit from acute care to community care provided by SCS.

Looking toward 2024, we are set to launch a flagship NCCS-SCS Rehabilitation Centre in tertiary setting, significantly enhancing the overall quality of care for patients before and during cancer treatments. Alongside our existing community rehabilitation centres, which aim to reduce side effects after treatment, SCS will provide comprehensive rehabilitation services at every stage of the cancer journey.

Additionally, SCS is committed to bring cancer care and support within reach of every Singaporean, regardless of where they live. Expanding the geographical footprint of our services is critical to this objective.

In May 2023, we were heartened to establish a community rehabilitation centre in the Jurong Medical Centre (JMC), working closely with National University

Cancer Institute, Singapore (NCIS) to serve patients under their charge. This centre is a critical node in our efforts to serve the cancer community in western Singapore.

SCS is actively collaborating with NCIS to enhance this centre in response to robust patient demand. In 2024, the centre will move to a bigger space within the NUH Medical Centre where NCIS is also located. Our focus is on creating seamless clinical pathways and care plans for our patients to ensure the highest quality of care is offered within one vicinity.

ADAPTING TO THE CHANGING LANDSCAPE OF CARE

The landscape of cancer healthcare changes constantly. SCS evaluates all developments to ensure our programmes and services remain effective in bridging gaps in cancer care.

In 2023, we initiated an impact study on the Introduction of the Ministry of Health's Cancer Drug List (CDL). It aimed to assess the implications of the CDL, which was announced in late 2022, and to identify possible gaps where SCS could provide further support. We were particularly focused on the SCS Cancer Treatment Fund (CTF) which provides subsidies for cancer treatments for patients in need.

Based on the findings, SCS put forth a proposal in May 2023 recommending the increase of the CTF subsidy quantum as well as expanding its coverage of cancer services (i.e. scans and lab investigations). These moves will keep the CTF relevant and responsive to changing needs, especially for Singaporeans who grapple with the cost of these services.

The past year also saw us reinvigorate our commitment to MOH's Healthier SG strategy which emphasises preventive healthcare. In July 2023, in coordination with the Health Promotion Board, SCS scaled up its distribution of FIT kits for colorectal screening where joint efforts allowed both institutions to reach a

total of 220,000 individuals through polyclinics and community initiatives. This commitment reflected our adaptability and dedication to public health measures. Internally, SCS has also seen a 40% growth of its FIT kits distribution through various channels, from nearly 69,000 individuals to nearly 95,000 individuals.

A LANDMARK SURVIVORSHIP CENTRE

Healthcare advances have increased cancer survivor rates over the years. In Singapore, there is a growing community of cancer survivors grappling with unique challenges, such as reintegrating into society and the workforce.

To address these needs head-on, SCS inaugurated Singapore's first-ever Survivorship Centre at Woods Square in September 2023. This landmark space is an oasis for survivors to connect, and access comprehensive services including cancer rehabilitation, psychosocial support, support groups, and volunteerism opportunities.

The opening of the Survivorship Centre reflects SCS's commitment to supporting individuals beyond traditional treatment. The centre addresses unique survivor needs, promoting a holistic recovery approach.

RALLYING COMMUNITY SUPPORT

Our annual fundraising events, Relay for Life and Race Against Cancer 2023 garnered strong support. Notably, Race Against Cancer achieved a record-breaking milestone, raising over \$1.5 million, the highest amount since the race's inception in 2009.

Both events adopted a peer-to-peer fundraising model, encouraging participants to engage others in donations enabling participants to be active cancer advocates, helping to spread SCS's message far and wide to the community.

CONCLUDING REMARKS

As we look ahead to 2024, SCS remains steadfast in our vision of a cancer-free community by minimising cancer and maximising lives. To this end, our four key strategic thrusts – reducing cancer incidence, increasing survivor rates, improving the quality of life, and fostering greater community action – will serve as our blueprint for the collective fight against cancer.

In the coming year, we are set to unveil exciting new ventures. SCS is on the path to becoming a "Smart SCS" to embrace technology to meet the demand and growing complexity in providing services for the cancer community.

These include identifying and implementing technologies that improve user interaction, streamline service delivery and personalise experiences. A digital transformation masterplan will allow the organisation to "serve more, serve better" towards its mission of minimising cancer and maximising lives. Additionally, we aim to strengthen our relationship with key cancer hospitals through initiatives like the NCCS-SCS Rehabilitation Centre in a tertiary setting focusing on journeying with patients pre and during cancer treatment as well as the enhanced rehabilitation centre located within NCIS. Most importantly, we are committed to work in concert with Healthier SG, the nation's public health directive.

Let us collectively fight against cancer, bringing hope and support for those impacted by this disease.

LEE MENG TAT
CHAIRMAN

ALBERT CHING
CHIEF EXECUTIVE OFFICER

SCS COUNCIL MEMBERS

The Singapore Cancer Society (SCS) is governed by a Council comprising of twelve elected members and up to four co-opted members, all of whom are volunteers who hold office for a term of two years at a time. Both the Council members and senior staff have no business relations with the Society. No council member holds executive roles within SCS and no staff are members of the Council. The Secretariat for the Council is the Chief Executive Officer.



Chairman
MR LEE MENG TAT

*Chairman (April 2023 to current)
Elected to Council April 2019
Co-opted to Council April 2018*

Sub-Committee(s):
*Chairman for Human Resource Committee,
Nominations Committee, Facilities and
Relocation Committee*

Mr Lee Meng Tat retired from the position of Chief Executive Officer of Non-Alcoholic Beverages Fraser & Neave Ltd in January 2022. He is currently the Independent Board Director, Member of the Remuneration Committee, Risk Management, Market Sustainability and Strategy Committee and Nominating Committee of Delfi Limited. He is also the Board Director, Member of the Strategy Committee and Nominating Committee of Vietnam Dairy Products Joint Stock Company (Vinamilk). He was certified in Corporate Governance ("IDP-C"), International Directors Programme, INSEAD in 2017.



Vice Chairman
**ASSOCIATE PROFESSOR
RAVINDRAN KANESVARAN**

*Vice Chairman (April 2018 to current)
Elected to Council April 2018
Co-opted to Council April 2016*

Sub-Committee(s):
*Chairman for Cancer Treatment Fund
Committee, Cancer Treatment Fund Sub-
Committee (Blood Cancer Type) and, Medical
Professional And Audit Committee
Vice Chairman for Cancer Rehabilitation
Management Committee
Committee member for Nominations Committee*

Dr Ravindran Kanesvaran is the Chairman/Senior Consultant in the Division of Medical Oncology of the National Cancer Centre Singapore. He is also an Associate Professor at Duke-NUS Medical School and clinical senior lecturer at the Yong Loo Lin School of Medicine, National University of Singapore. He is the Programme Director of the Medical Oncology Senior Residency Programme. Dr Kanesvaran is currently the President of the Singapore Society of Oncology and the Singapore Geriatric Oncology Society. He is on the Scientific and Education Committee and the National Representative for Singapore in the International Society of Geriatric Oncology and Council Member of the European Society of Medical Oncology.



Honorary Secretary
MS KOH HUI HWA

*Honorary Secretary (April 2023 to current)
Elected to Council April 2018*

Sub-Committee(s):
*Committee member for Nominations Committee
and Cancer Rehabilitation Management
Committee*

Ms Koh Hui Hwa is currently Vice President, Allied Health, Patient Experience and Group Procurement at IHH Healthcare. Ms Koh has 25 years of healthcare experience in the private sector as Chief Executive Officer of Gleneagles Hospital and Regional General Manager at Abbott Laboratories. She was a District Councillor and Vice-Chair of the Healthy Lifestyle Committee at the South-West Community Development Council in Singapore. She is also a Board Member of Archdiocesan Commission for Migrants & Itinerants and St Joseph Institution International.



Assistant Honorary Secretary
MR CHOO SWEE CHER

Assistant Honorary Secretary (April 2022 to current)
Elected to Council April 2018
Co-opted to Council April 2016

Sub-Committee(s):
Chairman for Community Partnership Committee member for Medical Professional And Audit Committee, NCCS-SCS Cancer Genetic Services Screening Programme Management Committee

Mr Choo Swee Cher is currently a Partner with Ernst & Young Solutions LLP, specialising in both investments and divestments. He also volunteers as the Chairperson of the Citizens' Consultative Committee at Punggol Shore Constituency.



Honorary Treasurer
MR TEH SENG LEONG

Honorary Treasurer (April 2023 to current)
Elected to Council April 2023

Sub-Committee(s):
Chairman for Finance Committee

Mr Teh Seng Leong is a Partner of Ernst & Young Singapore specialising in Strategy and Transactions and Real Estate. He assists multinationals, private equity and real estate funds, as well as government linked entities in M&A, valuations, due diligence and infrastructure advisory engagement across Southeast Asia. Mr Teh was previously at Ernst & Young LLP New York and PT EY Indonesia in Jakarta where he helped many private equity funds, conglomerates and entrepreneurs with their transaction requirements. He holds a Bachelor of Accountancy (Merit) from Nanyang Technology University, Singapore, and is a non-practicing member of the Institute of Singapore Chartered Accountants.



Assistant Honorary Treasurer
MR PEK TIONG BOON

Assistant Honorary Treasurer (June 2020 to current)
Elected to Council April 2016
Co-opted to Council April 2014

Sub-Committee(s):
Chairman for Welfare Committee
Committee member for Finance Committee

Mr Pek Tiong Boon has retired. He had previously served in various ministries in the Singapore Government Administrative Service. He was in charge of personnel management during his career stint at Times Publishing. Mr Pek also served as Director of Corporate Services in charge of Human Resources, Finance, and IT during his career stint at Sentosa Development Corporation.



Council Member
DR CHOO SU PIN

Elected to Council April 2023
Co-opted to Council April 2021

Sub-Committee(s):
Chairman for Cancer Research Panel Committee
Committee member for Community Health Committee, and Community Partnership Committee

Dr Choo Su Pin is a Medical Oncologist at Curie Oncology, who specialises in gastrointestinal cancers including colorectal, upper gastrointestinal, pancreas, hepatobiliary, peritoneal, and anal cancers. She is also a visiting consultant at the National Cancer Centre Singapore and Adjunct Associate Professor for the Singhealth Duke-NUS Oncology Academic Clinic Programme under Duke-NUS Graduate Medical School Singapore. Dr Choo is currently the Honorary Secretary of the Chapter of Medical Oncology Council, Academy of Medicine Singapore and a founding member of the SSO-Cancer Immunotherapy Consortium. She is also a faculty member for the Gastrointestinal Track of the European Society of Medical Oncology (ESMO) and member of the ESMO Women for Oncology Committee.



Council Member
MS DILYS BOEY

*Elected to Council April 2023
Co-opted to Council June 2020*

Sub-Committee(s):
*Co-Chairman for EmpowHER Committee
Committee member for Audit Committee and
Welfare Committee*

Ms Dilys Boey is the Chief Executive Officer of Workforce Singapore. Prior to this, she was the Deputy Chief Executive Officer (Industry Clusters) at Enterprise Singapore. Prior to joining the public service, she spent close to 25 years in management consulting and professional services and was a Partner and the ASEAN People Advisory Services Leader at Ernst & Young (EY). Ms Boey is currently on the Board of Special Needs Trust Corporation and the Singhealth Fund, and is a member of the Singapore Accountancy Commission Professional Education Council. She was a member of the Emerging Stronger Taskforce under the Future Economic Council.



Council Member
DR ANNA YIP

Elected to Council April 2023

Sub-Committee(s):
*Committee member for Digital And
Technology Committee*

Dr Anna Yip, is the CEO of Singtel's Consumer Singapore division since April 2021, after serving as Deputy CEO since December 2020. She has been instrumental in enhancing Singtel's market position through network superiority and customer-centric initiatives. Under Dr Yip's leadership, Singtel achieved nationwide 5G coverage in 2022 and actively supports national digital initiatives like Smart Nation and Digital for Life. Her focus is on providing easy, friendly, and smart customer journeys both online and offline. Dr Yip holds a Doctor of Philosophy and Master of Philosophy in Management Studies from Oxford University and a First-Class Honours degree in Business Administration from the Chinese University of Hong Kong.



Council Member
MR WONG YU HAN

*Elected to Council April 2023
Co-opted to Council April 2018*

Sub-Committee(s):
*Chairman for Digital And Technology
Committee
Committee member for Investment
Committee, Human Resource Committee,
and Cancer Rehabilitation Management
Committee*

Mr Wong Yu Han is the Co-Founder and Managing Director of 1 Plus (Europe) Ltd in London. He was previously the Chief Operating Officer of a Singapore listed company and was a Founding Director of a governmental agency. In 2014, Mr Wong organised Singapore's National Day Parade as Chairman of the Executive Committee. During his stint in the public service, he served as a diplomat in Jakarta and as national contingent commander in Afghanistan. In the private sector, Mr Wong used to serve as a Board Director in the Singapore Technologies Engineering group of companies.



Council Member
MR KENNY REBEIRA

*Elected to Council June 2020
Co-opted to Council April 2019*

Sub-Committee(s):
*Chairman for Audit Committee
Committee member for Help The Children &
Youth Programmes and Welfare Committee*

Mr Kenny Rebeira is an independent consultant to Novocure. He retired as Director in the Ministry of Defence. He is the Chairman of the Christian Brothers Schools Board. Mr Rebeira serves as a member of the Archdiocesan Commission for Catholic Schools. He is also active in the Harvard Business School (HBS) Alumni, where he served as a member of the HBS Alumni Board from 2011-2014. He graduated from the National University of Singapore (NUS) in 1984, where he was active in athletics, in the KE Hall at Kent Ridge, and in NUS Students Union.



Co-opted Council Member
MR MAK HOE KIT

Co-opted to Council April 2023

Sub-Committee(s):
*Chairman for Relay for Life Committee
Vice Chairman for Investment Committee
Committee member for Finance Committee,
Facilities and Relocation Committee*

Mr Mak Hoe Kit is the Managing Director, Private Equity Lodging of CapitaLand Investment Limited. He has over 27 years of experience in investments and asset management, particularly in real estate and private equity. Mr Mak joined The Ascott Limited in January 2019 as the Managing Director of Ascott Global Serviced Residence Fund. Prior to Ascott, he was with Frasers Hospitality as the Chief Investment Officer. Before that, he was Executive Director – Real Estate in Northstar Group; and Executive Director and Co-Leader – Real Estate in Ernst & Young. Mr Mak spent 5 years with Pacific Star Group as the Senior Vice President responsible for the Asia Real Estate Income Fund investing in commercial real estate across Asia. He started his career in NatSteel Group in investment and strategic planning across diversified industries. Mr Mak is a Chartered Financial Analyst. He holds a Master of Science in Real Estate and Bachelor of Engineering (Honours) from the National University of Singapore.



Co-opted Council Member
DR SAMUEL OW

Co-opted to Council April 2023

Sub-Committee(s):
*Chairman for Community Health Committee
Committee member for Cancer Research
Panel Committee and Breast Cancer
Awareness Campaign Committee*

Dr Samuel Ow is a Senior Consultant Medical Oncologist and Clinical Director at the Department of Haematology-Oncology, National University Cancer Institute, Singapore (NCIS). His clinical and research interests are in Breast Cancer and Clinical Cancer Genetics. Dr Ow is also an Assistant Professor at the Yong Loo Lin School of Medicine, National University of Singapore, and sits on the National Residency Advisory Committee for Medical Oncology. He is passionate about public education and outreach, and is heavily involved in the Breast Cancer Awareness Campaign at the institutional and national level, to help drive greater awareness for Breast Cancer screening and prevention in the general public.



Co-opted Council Member
DR EILEEN POON

Co-opted to Council April 2023

Sub-Committee(s):
*Committee member for Cancer Treatment
Fund Committee*

Dr Eileen Poon is a Consultant Medical Oncologist at the National Cancer Centre Singapore. She obtained her medical degree from the National University of Singapore in 2007 and completed her postgraduate internal medicine and residency training in Medical Oncology there. Dr Poon is also the Vice President of the Singapore Society of Oncology (SSO) and has a special interest in Adolescent and Young Adult Oncology (AYAO). She initiated the AYAO support group at NCCS in 2017 and spearheaded an AYA team to enhance cancer care for this group. Dr Poon is passionate about clinical education and aims to inspire young doctors to reach their full potential. She believes in individualising teaching strategies to accommodate different learning styles and recognises the importance of passing on not just scientific knowledge but also the art of good doctoring.



Co-opted Council Member
MR ANG I-MING

*Honorary Legal Counsel (September 2023
to current)*
Co-opted to Council September 2023

Sub-Committee(s):
*Committee member for Community Partnership
Committee, Facilities and Relocation Committee*

Mr Ang I-Ming retired in 2021 after more than 25 years as a legal professional in private practice with a regional firm. He has held various in-house legal positions in the public sector and with MNCs. Prior to his retirement, Mr Ang held the position of Senior Director/ Managing Counsel in a global legal department of an MNC.

MANAGEMENT



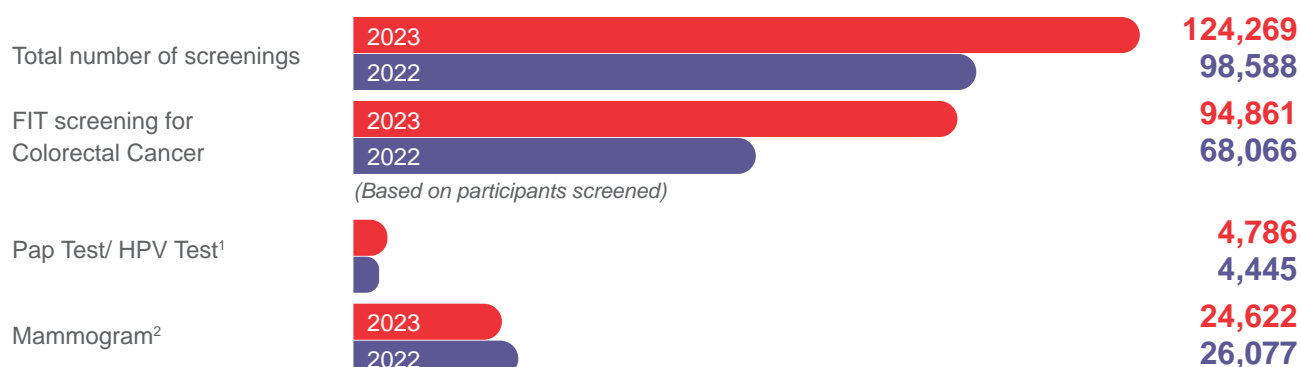
Organisation chart is correct as of 31 March 2024.

YEAR IN REVIEW HIGHLIGHTS

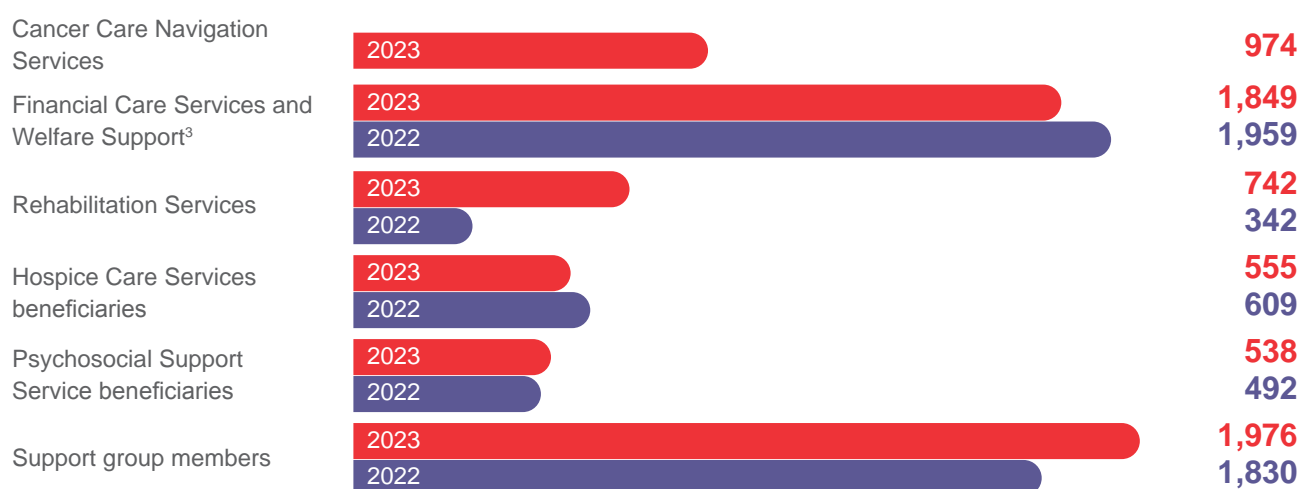
In 2023, Singapore Cancer Society (SCS) continues to raise cancer awareness and promote screening in our fight against cancer while maintaining good outreach coverage and organising impactful campaigns that can nudge the participants towards action. SCS is constantly improving our clinical services to provide patient services across the entire cancer continuum such as cancer rehabilitation, survivorship programmes and financial support as well as supporting patients and families during end-of-life care. It is this endearing pursuit that more of our healthcare professionals were awarded the Singhealth Health Quality Service Award this year. 2023 is also the year we established our cancer care navigation services, striving to provide a one-stop facility for cancer care services at our new SCS Survivorship Centre @ Woods Square in August.

The organisation's commitment to excellence is also highlighted by receiving the prestigious accolades for governance, the Charity Governance Award and the Charity Transparency Award, affirming our transparency, accountability and ethical leadership. This multifaceted progress underscores SCS' dedication to serving the cancer community effectively and sustainably.

CANCER PREVENTION AND CONTROL



CANCER CARE SUPPORT



¹ Total number of Pap/ HPV tests includes tests done in SCS Clinic @ Bishan, through FIT50 Operation Campaign and empowerHER.

² Total number of mammogram screening includes screenings done in SCS Clinic @ Bishan, under Community Mammobus Programme, under NHGD subsidy, through \$25 Mammogram Funding Assistance, FIT50 Operation Campaign and empowerHER.

³ Unique beneficiaries across various funding assistance schemes under SCS. One beneficiary may receive more than one support.

OUR GEOGRAPHICAL EXPANSION: A YEAR OF REACHING FURTHER AND SERVING BETTER

SCS has significantly expanded its impact and services for the cancer community in the past year. Notably, in March 2023, SCS moved into its new headquarters at the National Cancer Centre Singapore (NCCS) building, fostering collaboration and synergy with NCCS to serve the cancer community better. This move has allowed us to integrate services under one roof from screening to rehabilitation to survivorship and hospice care.



A significant **117%** growth in cancer patients receiving rehabilitation support underscores our commitment to holistic care.

To extend our reach, we set up satellite rehabilitation services at Jurong Medical Centre, ensuring accessibility for the population in western Singapore. A significant milestone was establishing the **SCS Survivorship Centre @ Woods Square**, showcasing our unwavering commitment to supporting individuals beyond traditional treatment. This specialised centre addresses unique survivor needs and provides a holistic recovery approach. The SCS Survivorship Centre will serve as an oasis for cancer warriors and survivors to share common concerns and engage in enriching activities to promote psychosocial and physical well-being.

Our customised programmes and services empower cancer warriors to reintegrate into the community, stay active, learn new skills, and give back, while also supporting survivors on their path to recovery.

RALLYING SUPPORT IN OUR FIGHT AGAINST CANCER THROUGH KEY FLAGSHIP EVENTS

In a remarkable showcase of community unity, SCS reached fundraising records with its annual flagship events, Singapore Cancer Society – TalkMed Relay for Life (RFL) and Singtel – Singapore Cancer Society Race Against Cancer (RAC). Both events emphasise on peer-to-peer fundraising not just to rally for donations in order to participate in the events, but with the objective to increase awareness on Cancer and spur participation in advocating the fight against cancer.

RFL, the iconic overnight relay, returned triumphantly as a full-fledged physical event in March, drawing nearly **4,000 participants** and **raising more than \$1.15 million**. This has marked a significant shift back to physical events for SCS after three years of pandemic measures, emphasising the community's eagerness for mass participation.

Celebrating its 15th anniversary, RAC achieved its highest fundraising milestone ever. Through the combined efforts of CEOs Against Cancer, corporate donors, and participants, the event **raised more than \$1.57 million**, substantially contributing to SCS programmes and services.

These accomplishments reflect the community's resilience and SCS's dedication to making a significant impact on cancer support and awareness.



RAC

Funds Raised:

\$1,571,805

(excluding donations-in-kind)

No. of Participants:

5,441

RFL

Funds Raised:

\$1,156,500

(excluding donations-in-kind)

No. of Participants:

3,957

SINGHEALTH QUALITY SERVICE AWARD 2024

Organised by the Singhealth Duke-NUS Academic Medical Centre since 2011, the Singapore Health Quality Service Awards is Singapore’s first dedicated platform to honour outstanding healthcare professionals from across the healthcare sector for their indomitable spirit and perseverance to deliver quality care and excellent service to patients. 17 healthcare professionals from the Singapore Cancer Society received these awards, with 9 Gold winners and 8 Silver winners, as compared to 14 award recipients last year.

The recipients were recognised for going the extra mile, and providing excellent services to those we serve.



AWARD-WINNING GOVERNANCE – ENHANCING OUR CREDIBILITY AND EXCELLENCE



SCS proudly received the Charity Governance Award, the highest honour from the Charity Council, which acknowledges outstanding governance standards. We have also secured the Charity Transparency Award for the third year running, which underscores our commitment to transparency practices. Presented at the Charity Transparency and Governance Awards 2023, these accolades reflect SCS’s dedication to excellence in governance and transparency, credited to the collective efforts of its members, staff, volunteers, partners, and stakeholders.

Approaching our 60th anniversary, SCS remains steadfast in upholding transparency, accountability, and ethical leadership. These awards inspire ongoing commitment to the highest standards, reinforcing our desire to “Serve More, Serve Better” for the cancer community through effective management. Our Chief Executive Officer (CEO), Mr Albert Ching, highlighted initiatives which includes hiring a Regulatory Assurance Manager to strengthen regulatory compliance for good governance and internal control while vigilantly monitoring significant donations and implementing Facebook Workplace. This Facebook platform facilitates communication among staff and beneficiaries and informs them about organisational developments. These actions affirm SCS’s commitment to ethical and transparent practices and solidify our credibility in the philanthropic landscape.

STORIES OF COURAGE AND HOPE

A BEACON OF STRENGTH AND HOPE

DEEPA MAURYA



In 2016, Deepa Maurya, an IT professional, received a devastating diagnosis of stage one Lung Cancer. Despite never having smoked and lacking a family history of cancer, the disease progressed to stage four within months, spreading to her brain, bone, uterus, and shoulder. Deepa underwent a multitude of treatments, including chemotherapy, radiation therapy, immunotherapy, targeted therapy, and surgery, all while facing side effects like insomnia, hearing loss, and numbness in her left arm.

Despite five relapses, Deepa remained resilient and optimistic, continuing to work throughout her cancer journey. Her job not only paid for her medical bills but also provided a sense of normalcy and happiness. Deepa's supportive employers allowed her to work from home and take medical leave when needed. SCS's Return to Work (RTW) programme further supported her transition back to the workforce, building her confidence and providing a support system to handle work stress.

In the face of adversity, the human spirit shines the brightest. These stories, from the Singapore Cancer Society (SCS) community, showcase the resilience and courage of those facing cancer – from one survivor's determination to keep working, to the selflessness of a home hospice patient. These individuals remind us of the strength in adversity and power of hope in even the darkest of times. Far from being passive recipients of aid, they have taken ownership of their lives, inspiring those around them and leaving a lasting impact in their communities.



Ms Deepa Maurya, her husband and her son.

Deepa's family, particularly her husband, Vinit, and son, Deepanshu, were her anchors, attending key doctor's appointments and taking on household chores and financial responsibilities. Despite her own struggles, Deepa actively gave back to the community by volunteering with the Keat Hong Community Centre and holding leadership positions in cancer support groups, inspiring others with her resilience. Her story motivated improvements in the RTW programme to better support workers in similar situations. Deepa Maurya's journey demonstrated the power of strength and hope in the face of adversity.

WINGS OF HOPE: WHAT GROWING UP AROUND CANCER IS LIKE

KENJI NG



Mr Kenji Ng performed at the SCS Award Achievement 2023.



Kenji Ng's life has been a profound example to the strength and hope that can be found in the face of adversity. Growing up around cancer, he learned early on the impact it can have on a family. His father's diagnosis of Nose Cancer when Kenji was just eight months old changed their lives drastically. His father was unable to work, leaving his mother as the sole breadwinner to meet their family's needs.

Throughout this challenging time, SCS was a constant source of support for Kenji and his family. We provided financial assistance and emotional support, and the presence of a cancer community helped the family to tide through challenges with renewed strength.

As a child of a Cancer patient, Kenji witnessed firsthand the physical and emotional toll that Cancer can take on a person and their loved ones. Despite the difficulties, he learned invaluable lessons about love, resilience, and the power of hope.

Currently a university student pursuing a degree in business, specialising in marketing at the Nanyang Technological University (NTU), Kenji is a shining example of resilience. He has straddled part-time work since he was 14, embracing diverse roles such as a masseur, flyer distributor, tutor, musical actor, emcee, photographer, and salesperson.

Kenji's journey with SCS has been a lifelong one, and he is forever grateful for the impact SCS have made in his life. He recently performed at the SCS Award Achievement event to spread a message of hope and gratitude to the cancer community.

“ Your dedication is truly remarkable, and I am forever grateful for the impact you make in the lives of those affected by Cancer. ”

- Kenji expressed his gratitude to SCS in a LinkedIn post



Mr Wee's (rightmost) momentous 70th birthday bash at the newly-unveiled SCS Survivorship Centre.

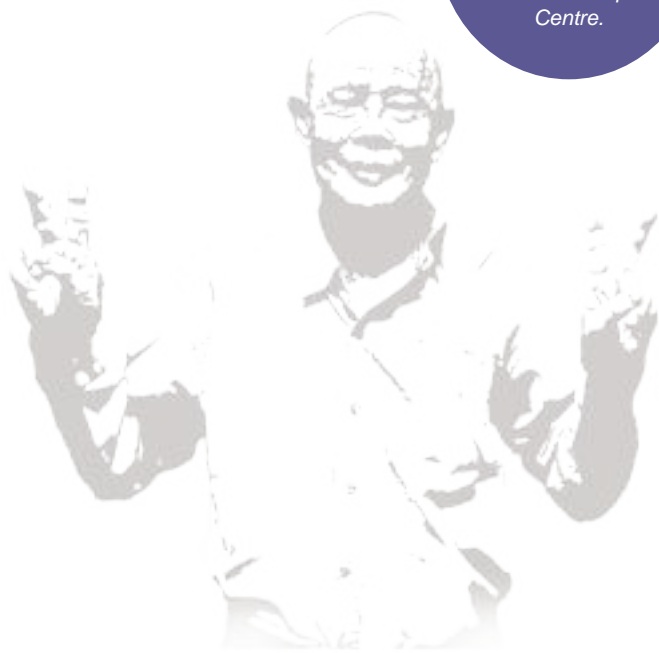
RAISING THE BAR AT 70

MR WEE SAY SUN

Mr Wee Say Sun, a Prostate Cancer survivor, celebrated his 70th birthday in a unique way. Instead of focusing solely on himself, he chose to honour his late wife, who had passed away from leukaemia at the same age. This selfless act showcased Mr Wee's remarkable courage and resilience in the face of adversity.



A cherished portrait of Mr Wee Say Sun's family.



Mr Wee's birthday party was a joyous occasion surrounded by family and friends. Among his guests were fellow members of the SCS Walnut Warriors Support Group, a community of Prostate Cancer survivors who have been a source of strength and understanding for Mr Wee. He has found solace and camaraderie in this group which provides emotional support and encouragement to those battling Prostate Cancer.

Mr Wee's positive attitude towards his condition is inspiring. He believes in living life to the fullest and refuses to let Cancer define him. He is grateful for the support from SCS which plays a crucial role in his journey to recovery.

In honour of his late wife, Mr Wee launched the Birthday Givebacks campaign. He has raised nearly \$20,000 so far and hopes to reach \$50,000 by the end of 2024. He inspires other cancer survivors to give back and support SCS, which relies on donations to continue our important work.

Mr Wee's story is a powerful reminder of the strength and resilience of the human spirit. He is a shining example of how strength and courage can triumph over adversity, and how even in the darkest of times, there is always a reason to celebrate life.

“I AM A PORSCHE WITH NO BRAKES.”

MADAM ROKIYA



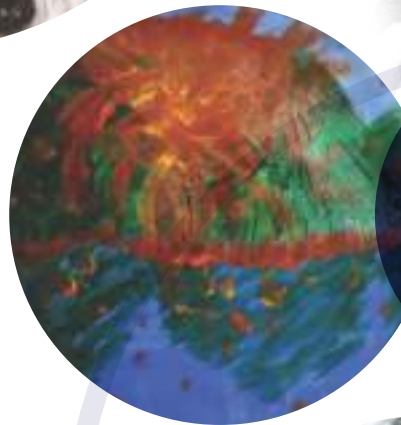
A much treasured moment for Madam Rokiya and her family as they celebrated the birthday of the first daughter, 10 days before her passing.



Madam Rokiya's battle against Cancer showcased the strength of resilience and love. Embracing life with a fierce determination and refusing to let the disease define her since her diagnosis in 2021, she continued her daily routines and even finding solace in art therapy. Her love for her family was unyielding, and she cherished every moment with her six children, aged 13 to 21.

Before her diagnosis, Madam Rokiya volunteered in her community, a passion she continued when her health allowed. She also shared her cancer journey to inspire others, with her story featured at SCS's Relay For Life 2023. As her condition deteriorated, Madam Rokiya relied on her family and SCS Hospice Care Services. With our support, she was able to live her final days in comfort, passing away peacefully at home with her family by her side.

Madam Rokiya's story challenges the stigma surrounding terminal cancer patients receiving home hospice care. She was not just a passive recipient of aid but she was also the author of her own life story, supported by her loved ones and the SCS team. Her legacy lives on through her family and the community she touched, inspiring others to live life to the fullest.



Madam Rokiya was referred to SCS Art Therapist as she enjoyed arts and craft, and she coped with her illness by expressing her emotions through painting.



Referred to Ambulance Wish Singapore (AWS), Madam Rokiya fulfilled her wish to have a staycation with her family and extended relatives with a series of family bonding activities.

STRATEGIC THRUST 1:

REDUCE CANCER INCIDENCE



The Singapore Cancer Society (SCS) first strategic thrust to reduce cancer incidence aims to rally communities, forge alliances and empower individuals in the areas of cancer prevention, early detection and in the fight against cancer. Together, we envision a future free from its grasp, inspiring hope for all.



WORLD CANCER DAY AT KAMPUNG ADMIRALTY

World Cancer Day ignited a blaze of hope and unity as we stood together, steadfast in our commitment to combat this formidable adversary. The event at Kampung Admiralty on 4 February 2023 marked a pivotal moment in our fight against cancer, catalysing a wave of solidarity that rippled nationwide.

Amidst the glow of determination, nine iconic buildings and landmarks illuminated the night sky in hues of blue and orange, symbols of the relentless support for our cause. The media featured a total of 41 articles, echoing our message louder than ever – a 24% increase from last year.

But this year was more than just numbers; it was a powerful display to resilience and collaboration. Breaking free from the constraints of the pandemic, we rekindled the spirit of public engagement, forging connections that transcend boundaries.

The event at Kampung Admiralty was supported by the North West Community Development Council (NWCDC). It brought SCS together in a tripartite partnership with the Nation's leading cancer institutions – the National Cancer Centre Singapore (NCCS) and the National University Cancer Institute, Singapore (NCIS) under the auspices of

World Cancer Day, leveraging on SCS' strength of being a connector in the community. Our collaboration with NWCDC in the areas of cancer control and prevention revived the Fight Cancer @ Northwest Programme. SCS' collaborations with NCCS and NCIS bring forth a new era in cancer care.

With NCCS, we embark on a journey towards establishing the NCSS-SCS Rehabilitation Centre in a tertiary setting to provide rehabilitation support to cancer patients undergoing cancer treatment. A first of its kind, this partnership allows a seamless and integrated holistic cancer care. Cancer patients undergoing cancer treatment will be supported by a multi-disciplinary team that includes oncologists, surgeons, rehabilitation physicians, allied health professionals and psychosocial support staff.

The collaboration with NCCS on the Cancer Genetics Service Screening Programme will reveal new avenues of detecting cancer early, through the identification of potential cancer genes for at-risk individuals. Cancer Genetics screening ensures that individuals who may be financially disadvantaged obtain the necessary support early in the cancer journey.



Our alliance with NCIS promises to amplify our voice in public awareness campaigns, empowering communities with knowledge and resources, including collaborating with SCS to distribute the Faecal Immunochemical Test (FIT) kits at our public forums. Together, NCIS and SCS will be setting up a cancer rehabilitation centre at the NUH Medical Centre. This allows us to cope with an increasingly expanding pool of cancer patients residing in western Singapore.

With North West Community Development Centre (NWCDC) by our side, we pledge to deepen our engagement with communities, spread awareness and foster support networks across neighbourhoods. Together we reignite Fight Cancer @ Northwest Programme which aims to fight cancer via a 3A plan – “Awareness, Action and Advocacy” with an aim to provide the community with resources such as cancer education forums, health screenings, healthy living activities, and the development of a Cancer Caregivers Network.



MINIMISING CANCER AND MAXIMISING LIVES THROUGH CANCER AWARENESS CAMPAIGNS

In the pursuit of our mission of Minimising Cancer and Maximising Lives, SCS continues to expand public education outreach. Throughout the year, we launch a series of cancer awareness campaigns, each a beacon of hope meant to enhance one's knowledge on the types of cancers and to encourage the public to go for relevant screenings.

WOMEN'S GYNAECOLOGICAL CANCER AWARENESS CAMPAIGN (WGCAM)

Recognising the diversity of our community, we pioneered targeted outreach to participants with hearing impairments in the WGCAM by incorporating sign language into our campaign. The first WGCAM since COVID was delivered in an engaging and effective dialogue session where 78% of the participants felt that the session was meaningful.

SCS's ongoing partnership with People's Association (PA) has further expanded outreach with participation from more than 20 community centres. The objective was to encourage residents at specific neighbourhoods to enrol for our cancer awareness programmes and go for regular cancer screenings. In 2023, a total of 628 women registered their interest in cancer screenings all of which were arranged at the SCS Clinic @ Bishan.

HPV tests done at SCS Clinic @ Bishan:

3,617

PAP tests done at SCS Clinic @ Bishan:

800

Abnormality cases detected for PAP and HPV tests:

398

Cases referred for further assessments for abnormalities detected at SCS Clinic @ Bishan:

233



COLORECTAL CANCER AWARENESS MONTH (CCAM)

In Colorectal Cancer Awareness Month, we harnessed the timeless resonance of dialects to amplify our message. With eyes set on the older generation, we crafted videos in the musical cadence of Hokkien, speaking directly to the souls of those who hold our heritage dear.

From bus interchanges to MRT stations, from social media to digital screens, our message reverberated, weaving its way into the fabric of everyday life. With each screening kit distributed and each life touched, we painted a canvas of hope guided by the wisdom of our forebears.

Participants who collected FIT kits for screening:

129,087

Participants screened:

94,861

Participants with positive FIT kit results:

6,958

(Data by Health Promotion Board)

Total participants
outreach during
CCAM roadshow:

25,846



FIT kits are available to the public and can be picked up at various partner distributors.

Retailers and pharmacies:

Eu Yan Sang,
Guardian,
Unity,
Welcia-BHG

Polyclinics:

National University Polyclinics,
National Healthcare Group Polyclinics,
Singhealth Polyclinics

TCM Practitioners:

Singapore Thong Chai Medical Institution,
Tzu Chi Singapore

Others:

Alexandra Hospital,
Curasia Endoscopy Centre,
National University Health System (NUHS) Carehub,
NuHealth Medical Centre,
NUHS Primary Care Network,
NUH University Health Centre,
Ng Teng Fong General Hospital,
NTUC Health Family Medicine Clinic (Serangoon),
NuHealth Medical Centre,
St Luke's Community Clinic

Supporting Stakeholders:

Changi General Hospital,
Colorectal Practice,
SOG Health,
National Cancer Centre Singapore,
National University Cancer Institute Singapore,
Screen for Life,
Singapore General Hospital,
Tan Tock Seng Hospital



Hand-on resistance band exercise led by Ms Michell, Cancer exercise trainer at SCS Cancer Rehabilitation Centre.

SCS MEN'S HEALTH FAIR

With rising cancer incidence in Prostate Cancer, SCS ran its first Men's Health Fair in conjunction with Prostate Cancer Awareness Month (PCAM) Campaign. The event was held at the Tampines West Community Centre. We were humbled to have Minister Masagos Zulkifli, Minister for Social and Family Development, Second Minister for Health and Minister-in-charge of Muslim Affairs grace our event as Guest of Honour.

SCS worked with the People's Association, NCCS, NCIS, Sengkang General Hospital, the Society of Men's Health Singapore and the Singapore Urological Association with the talks by doctors as well as exercise regimes and healthy eating that were presented to the public. The event also showcased a personal sharing session by Mr Sam Ho, Chairperson of SCS Walnut Warriors (Prostate Cancer) Support Group. The event was a huge success with full subscription to all programmes.



Ms Clara Loh, Assistant Manager, SCS Community Health team shares with Minister Masagos Zulkifli and SCS Chairman Lee Meng Tat, the importance of early screening.

SCS GASTRIC CANCER AWARENESS MONTH (GCAM)

Gastric Cancer is commonly known as Stomach Cancer, the 7th and 10th most common cancer among men and women respectively in Singapore. On 23 September 2023, SCS held a webinar in English and Mandarin where doctors from SCS Gastric Cancer committee shared on how we can protect our stomach such as risk factors and prevention, early detection of Gastric Cancer symptoms and current treatment for Gastric Cancer. More than 710 participants attended the live streams online!



SCS LUNG CANCER AWARENESS MONTH (LCAM)



Lung Cancer is the third most common cancer diagnosed in Singapore which affects both men and women and kills approximately 2,500 smokers and 250 non-smokers each year in Singapore. In November 2023, SCS drove the Lung Cancer Awareness Campaign with activities such as Lung Cancer Webinars in English and Mandarin that was attended by a total of 397 participants.

The ongoing partnership with Parkway Cancer Centre allowed us to produce a video on signs and symptoms of Lung Cancer, a two-part video series by doctor in the LCAM Committee, Dr Wong Seng Weng who debunked and provided much needed clarity on common Lung Cancer myths.



Finally, to encourage the public to lead an active smoke-free lifestyle, SCS organised the Happy Lungs Virtual Run in the month of November with 2,505 participants taking part in this initiative.

STRENGTHENING COMMUNITY ENGAGEMENT

SCS embarked on partnership with government agencies like People's Association (PA), Community Development Councils (CDCs), Active Aging Centres (AACs) and M³, as well as hospitals and social services organisation like Ain Society to enhance cancer awareness and benefits of regular cancer screening for early detection of cancer to improve survivor rate.



As cancer casts its shadow over specific segments of our society, we stood undaunted, ready to meet the challenge head-on.

In a collaborative effort with M³ and OnePA to empower low-income Malay/Muslim families in Jurong and Chua Chu Kang, the organisation had a booth at FamFest@ Southwest at the Jurong Lake Gardens to share information with the public about the various functional screening services offered by SCS. FIT Kits were distributed to eligible seniors aged 50 and above. This is only one example of SCS' public education effort; our screening booths stood as symbol of hope, a tangible reminder of our commitment to their well-being.

But our journey does not end there, for we stand shoulder to shoulder with our partners in progress.



**Total number of
outreach events/
activities:**

76

**Total number of
partners we have
worked with:**

40

DYNAMIC YOUTH ENGAGEMENT

As we stand on the precipice of a new era, SCS boldly charts a course towards a future shaped by the determination and perseverance of our youth. In the past year, our commitment to empowering the leaders of tomorrow has reached new heights, igniting a spark of inspiration that resonate far and wide.

At the forefront of our endeavours lies a collaboration with the Early Childhood Development Agency (ECDA). Together, we embarked on a journey to drive the publicity and uptake of SCS preschool talk programmes by local preschools in 2023. With each visit to a preschool, we sow the seeds of knowledge, nurturing young minds with the tools to safeguard their future against the spectre of cancer.

Our reach also extends beyond the confines of preschools as we harness the competitive spirit of the youth through the SCS Interschool Competitions opened to tertiary students aged 17 to 25. Themed, "Strike Out Cancer", participants were given the opportunity to create visual illustrations and curate short videos relating to Breast Cancer, Lung Cancer and the Human Papillomavirus infections that drive SCS's mission to Minimise Cancer and Maximise Lives.

Winners from the competition attended an Awards Ceremony, graced by Mr Tan Kiat How, Senior Minister of State, Ministry of Communications and Information & Ministry of National Development.

Congratulations to the winners of the 2023 SCS Interschool Competition:

Overall Winner in the undergraduate category: Mok Xiao Rou from Singapore Management University and Ryan Leong from National University of Singapore.

Overall Winner in the ITE, Junior College and Diploma category: Micaela Toh from Raffles Institution

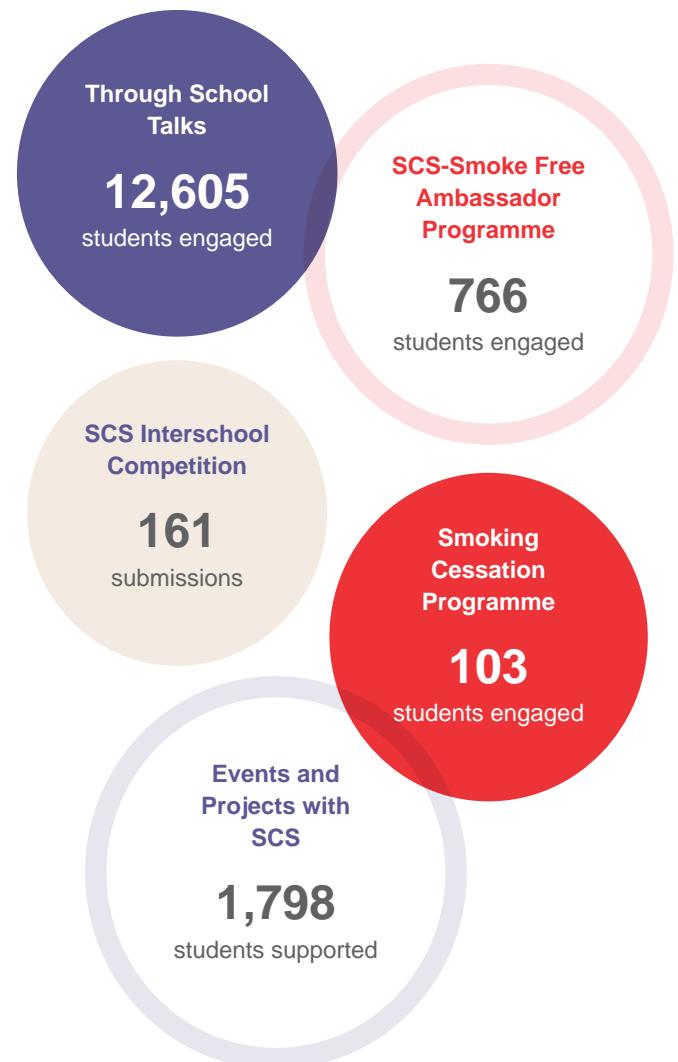
People's Choice Awards in the undergraduate category: Gui Ging Yi from Singapore University of Social Sciences

People's Choice Awards in the ITE, Junior College and Diploma category: Jolin Choong, Liang Yuhan and Serene Ang Xin Ning from Jurong Pioneer Junior College.

Yet, our mission does not end with awareness alone. We continue to champion a smoke-free society through our Smoke-Free Ambassador Programme and Smoking Cessation Programme, empowering youth to take ownership of their health and well-being. As ambassadors of change, they stand as guiding lights, leading their peers towards a brighter, smoke-free future.



SCS YOUTH OUTREACH PROGRAMMES



STRATEGIC THRUST 2:

INCREASE SURVIVOR RATE



The Singapore Cancer Society (SCS) second strategic thrust to increasing survivor rate focus on cultivating survivorship and fostering enduring hope. We aim to uplift those who have overcome adversity through dedicated support systems and nurturing care. Together, we navigate the journey beyond illness, embracing each step with determination and optimism. This is not just about overcoming challenges; it is about thriving beyond them, illuminating paths of hope for others to follow.

CHARTING A DYNAMIC COURSE TOWARDS PREVENTIVE WELLNESS WITH HEALTHIER SG

Singapore is pioneering a healthier future with the Healthier SG national initiative. Spearheaded by the Ministry of Health, this visionary endeavour intensifies preventive care efforts and empower individuals to make the choice to stay healthy.

At the Singapore Cancer Society (SCS), we stand unwaveringly committed to championing this transformative movement. As a cornerstone of our mission, we recognise the profound impact of preventive healthcare in fostering vibrant communities and driving sustainable progress. That is why we are thrilled to announce our strategic pivot towards supporting the Healthier SG initiative, embarking on a journey that promises to redefine the healthcare landscape in Singapore.

Central to our commitment is our constant dedication to upstream cancer prevention efforts. We firmly believe that early detection is critical to combating cancer effectively, and we must equip Singaporeans with the tools and knowledge they need to safeguard their health proactively.

As a testament to our steadfast resolve, we significantly scaled up our Faecal Immunochemical Test (FIT) kit distribution – a colorectal screening test kit pivotal in early cancer detection in July 2023. In response to the government's call to action, we have multiplied our efforts by 2.5 fold, amplifying our impact and demonstrating our agility in rallying behind the Healthier SG cause.



This bold move underscores our steadfast commitment to aligning our priorities with the national agenda and showcases our dedication to driving positive change. By fortifying our partnership with the government to supply FIT kits to polyclinics, we are advancing cancer prevention and reinforcing the pillars of community health and resilience.

#eNEW50 HEALTH REVOLUTION

More than just a campaign, #eNEW50 movement is a clarion call to action for every Singaporean aged 50 and above to seize control of their health destiny.



At the heart of #eNEW50 movement lies a simple yet profound mission: **to empower those over 50 with the knowledge and resources they need to safeguard their well-being.** As we navigate the complexities of modern life, it is easy to overlook the importance of preventive healthcare. But #eNEW50 is ushering in a new era of proactive health management, where age is not a barrier but a badge of wisdom and resilience.

In 2023, we unleashed the full force of the #eNEW50 movement, enlisting the support of influential voices from all corners of society. From beloved celebrities, radio DJ's Vernetta Lopez and host Steven Chia, to esteemed Members of Parliament like Saktiandi Supaat, to be our #eNEW50 ambassadors, we rallied a coalition of champions to champion the cause of cancer screenings among our over-50 community. Their impassioned advocacy and commitment illuminated the path towards a healthier, brighter future for all.

But the #eNEW50 movement continues further featuring personal stories by prominent personalities who are celebrating their 50s. With each passing day, we delve deeper into the community and uncover more stories of resilience, determination, and triumph. From the unsung heroes quietly battling illness to the tireless advocates championing change, every voice and action propels us closer to our ultimate goal – a Singapore where health knows no bounds and every individual thrives.

CONTINUOUS EFFORT TO MAKE MAMMOGRAM SCREENINGS ACCESSIBLE AND AFFORDABLE TO WOMEN

Breast Cancer Awareness Month (BCAM) is a time when voices unite, hearts beat as one, and a resounding call to action echoes across the globe.

Women benefitted from the \$25 Mammogram Funding Assistance offered to eligible women:

17,069



Partners for \$25 Mammogram Funding Assistance:

50



Women benefitted from CMP programme offered to eligible women:

4,050

SCS continues our \$25 mammogram funding assistance to encourage eligible participants to do mammogram screenings. It is part of our drive to make preventive healthcare more accessible and reduce financial constraints that stand in the way of early detection. Such moves will empower more women to take control of their health journey.



In collaboration with the National Healthcare Group Diagnostics (NHGD) and the Breast Cancer Foundation (BCF), we are taking our mission to the streets with the Community Mammobus which brings screening services directly to those who need it most, ensuring that no woman is left behind in the fight against Breast Cancer.

Our commitment to raise awareness on Breast Cancer extends far beyond mere funding assistance. At SCS, we are trailblazers, pioneers, and innovators – nowhere is this more evident than in our mammogram facility since 2015 in our Screening Clinic @ Bishan. As the first non-profit organisation to boast its mammogram facility, we are setting the standard for excellence in Breast Cancer screening and detection. With state-of-the-art technology and a team of dedicated specialists, we are leading the fight against Breast Cancer, one mammogram at a time.

With mammogram screening services available on Mondays, Wednesdays, and Fridays, we are reaching out to women who hold a valid blue or orange Community Health Assist Scheme (CHAS) card to take up the opportunity to go for regular screenings. At SCS we believe that no woman should ever have to face Breast Cancer alone – and with our support, they never will.

SCS alongside our partners National University Cancer Institute, Singapore (NCIS), Breast Cancer Foundation (BCF), Health Promotion Board (HPB), National Cancer Centre Singapore (NCCS) and Tan Tock Seng Hospital (TTSH) launched the theme of 'Keeping Her In The Picture', a call to everyone to look out for the well-being of the important women in their lives.

This theme was supported by a range of events such as the BCAM webinar where Breast Cancer doctors, survivors and rehabilitation physiotherapists shared on the importance of early detection through regular screening as well as the signs and symptoms, benefits of the various screening modalities, treatment options and rehabilitation care for Breast Cancer patients in Singapore. The webinar, held in English and Mandarin, saw over 700 eager attendees.

As part of our outreach efforts to engage women on increased awareness of Breast Cancer, the Community Health team reached out to the heartland communities via various public forums and carnivals organised by Khoo Teck Puat Hospital, Jurong Medical Centre, NCIS and TTSH. Further efforts uptake brought SCS to mosques and community settings and through social media and radio interviews to increase the mammogram screening take up rate.



Mammogram screenings done at SCS Clinic @ Bishan:
2,603

Abnormality cases detected:
164

Cases referred for further assessment for abnormalities:
64

BREAST CANCER AWARENESS CAMPAIGN

SINGAPORE CANCER SOCIETY

TIME TO LOOK AT YOURS

Care for your breast health with regular mammograms and monthly breast self-examinations!

Breast cancer is the **NO.1 CANCER** affecting Singaporean women*. Early detection can save lives, so, once you turn 50, go for your mammogram once every 2 years**!

PARTNERING TEMASEK FOUNDATION IN THE FIGHT AGAINST CANCER

The HPV Immunisation Programme champions change and transforms lives through proactive preventive measures.



SCS and Temasek Foundation continues to run the HPV Immunisation Programme, with the aim of educating ladies on cervical cancer and the importance of the vaccination. HPV vaccinations are available for females aged 18 to 45 who have received the first dose, at no cost. This initiative helps eligible women cover the out-of-pocket expenses for three doses of the HPV vaccination, after government subsidies.

**CHAS GP
onboard the HPV
Immunisation
Programme:**

414

**Number of young
women who have
at least taken their
first dose:**

3,885

The programme has been actively promoted via different channels and is particularly targeted at the 'catch-up-cohort' - those who might have missed the vaccination before it was introduced as part of the national vaccination programme in school. With these efforts, vaccination rates have been steadily increasing and has attracted an expanding list of clinics that have joined in to offer the vaccinations.

STRATEGIC THRUST 3:

IMPROVE QUALITY OF LIFE



In the relentless pursuit of progress, we reject the notion to settle for mere survival. Instead, we envision a world where cancer survivors not only endure but thrive, where every individual confronted with this formidable adversary discovers the resilience within to lead lives brimming with vitality and purpose.

Our mission extends beyond medical interventions; it embraces a holistic approach, nurturing emotional fortitude, bolstering mental well-being, and facilitating seamless reintegration into society. At the heart of this endeavour lies the commitment of the Singapore Cancer Society (SCS) to uplift, empower, and inspire.

Through tailored therapies, constant support, and transformative education, we pave the path to a future where every cancer patient and their loved ones can embrace a life of boundless possibility.

EMPOWERING CANCER REHABILITATION: A BOLD STEP FORWARD

ELEVATING SUPPORT FOR EVERY JOURNEY



At the Singapore Cancer Society Rehabilitation Centre (SCSRC), we envision a future where every cancer patient, survivor, and caregiver receives the support they need to thrive. Our mission is to provide integrated care that transcends boundaries, igniting hope and resilience in the face of adversity.

In 2023, we marked a significant milestone as we relocated our community cancer rehabilitation centre from Jurong East to the prestigious National Cancer Centre Singapore (NCCS) building. This strategic move signifies our commitment to seamlessly integrate community cancer rehabilitation programmes and services as part of post-acute cancer care management, thereby enhancing accessibility and continuity for our community.

Collaborating closely with Jurong Medical Centre (JMC), we continue satellite rehabilitation services, ensuring that our presence remains strong in serving the cancer population in western Singapore.

This expansion underscores our dedication to meeting the diverse needs of our beneficiaries, wherever they may be on their journey. The rehabilitation programmes allow patients to restore functional mobility, live a healthy lifestyle and lessen the negative symptoms of cancer treatments. SCS's multidisciplinary team of rehabilitation professionals stand ready to support individuals and their families to reclaim their lives.

At the heart of our approach lies a commitment to leveraging digital solutions to enhance accessibility and effectiveness. Through wearable sensors and remote monitoring systems, we bridge the gap between patients and clinicians, ensuring continuity of care and empowering individuals to take ownership of their health journey.

Looking ahead, we are excited to unveil our vision for a seamless continuum of rehab services. By embracing "pre-rehabilitation" strategies, we aim to optimise patient outcomes by strengthening their bodies before cancer treatment, setting the stage for faster recovery and improved resilience. The impending opening of the NCCS-SCS Rehabilitation Centre represents a pivotal step forward in our mission to redefine cancer care. With a focus on innovation, collaboration, and empowerment, we are positioned to shape a future where every individual affected by cancer has the support they need to thrive.



CHARTING THE PATH TO SUSTAINABLE CANCER REHABILITATION EXCELLENCE



In our relentless pursuit of excellence in cancer rehabilitation, we are boldly pioneering new avenues to ensure sustained effectiveness. SCS enables patients to take control of their recovery journey. We actively involve and encourage participation in the flagship programmes such as, Singapore Cancer Society – TalkMed Relay for Life (RFL) and SingTel-Singapore Cancer Society Race Against Cancer as well as SCS exercise programmes, outdoor activities such as the walks in Singapore Botanic Gardens. Patients who participate in these initiatives see a difference in their physical and mental wellbeing.

Singapore Cancer Society Rehabilitation Centre (SCSRC) has obtained accreditation from the prestigious American College of Sports Medicine (ACSM) as Cancer Exercise Trainers. Our commitment to excellence knows no bounds as we strive to provide the highest quality care and support to every individual battling cancer.



Ensuring sustainability of cancer rehabilitation effectiveness.

PROPELLING DIGITAL SOLUTIONS FOR CANCER REHABILITATION

Amid challenges, we find inspiration in the remarkable strides of digital solutions. 19 patients experienced improvement in their quality of life through the use of Rebee's wearable sensors. Beyond mere technology, this signifies empowerment; patients reclaiming agency over their health, diminishing the financial burden of travel expenses, and committing to a sustained, healthy lifestyle. It is about more than survival – it is about fostering wellness and independence, alleviating symptoms, and maximising quality of life.

Embracing wearable sensors transcends geographical barriers, ensuring every individual can access essential care regardless of location. It benefits cancer patients who are currently undergoing cancer treatments and have concerns commuting for their rehabilitation. The Rebee wearable ensures that the patient can received rehabilitation support from the comfort of their home.



Through our collaboration with corporate partners, SCS was able to release a comprehensive YouTube series in English, Mandarin and Malay where patients can access from the comfort of their home in their journey to rehabilitation.

NUS PARTNERSHIP UNVEILS CANCER CARE GAPS: INTRODUCING PROJECT MEDIPAL

In a world where challenges seem impossible, a group of bold minds from diverse backgrounds has joined forces to spearhead change. Project Medipal, led by a dynamic team of NUS students spanning medical and non-medical disciplines. The aim is to provide psychosocial support to newly diagnosed Breast Cancer patients, guiding them through the labyrinth of uncertainty towards a path of resilience and recovery.

Through focused discussions and intimate interviews conducted from August to November 2022, we unearthed the raw truths of the Breast Cancer experience.

The findings were profound yet unsurprising. Emotional turbulence, physical constraints, and the overwhelming deluge of information emerged as the common adversaries faced by patients.

Armed with these insights, they set forth to create a solution that transcends mere functionality – embodying empathy, precision, and empowerment. Enter our revolutionary chatbot – an embodiment of personalised support, meticulously crafted to offer solace in the face of uncertainty. What sets our chatbot apart? It is not merely a repository of canned responses. Each interaction shows our commitment to excellence, drawing from a wealth of medical expertise curated by NCCS, NCIS, and



SCS. Every word and every recommendation is steeped in rigour and compassion, providing patients with a lifeline they can trust.

But our journey doesn't end there. We stand on the precipice of innovation, poised to test the efficacy of our solution with the rehabilitation team from SCS. Through collaboration and feedback, we strive to refine and elevate our chatbot, ensuring it evolves in tandem with the needs of those it serves.

EMPOWERING TOMORROW'S ALLIED HEALTH LEADERS

At the forefront of this movement stand the final-year Physiotherapy and Occupational Therapy students of the Singapore Institute of Technology (SIT), poised to redefine the landscape of allied health. SIT has embarked on a journey by recognising the pivotal role of hands-on experience in shaping the next generation of healthcare professionals. Through a visionary partnership, SIT has opened its doors to these therapists, providing them with an opportunity to immerse themselves in the intricacies of clinical practice.

Through this bold initiative, SIT and SCS are not merely shaping healthcare professionals; it is shaping visionaries who will lead the charge towards a brighter, healthier future for all.



VOLUNTEERS LIGHTING THE PATH IN CANCER REHABILITATION COMMUNITY CARE

Dedicated volunteers like Kate and Rituparna, whose commitment to service ignites hope and healing in the hearts of those battling cancer. Driven by a shared vision of empowerment, these remarkable individuals have become the heartbeat of SCS's cancer rehabilitation department. Through their involvement in the exercise buddy programme, they transcend the traditional boundaries of volunteerism, becoming beacons of light in the darkest times.

“ Volunteering at the Singapore Cancer Society as an Exercise Buddy has been incredibly rewarding. Initially, my tasks were simple - monitoring patients' blood pressure, assisting with exercises, and tidying up equipment. Over time, I built rapport with patients, engaging in exercises alongside them and fostering meaningful conversations, enhancing my communication skills. I also developed strong bonds with staff and fellow volunteers, working seamlessly as a team to ensure patient comfort. This experience has not only taught me about patient care but has also been immensely enjoyable. I look forward to continuing my volunteer work with this organisation. ”

Rituparna

“ I have volunteered with the Singapore Cancer Society's Exercise Buddies programme for about six months, which has been incredibly fulfilling. My initial curiosity about the support available for cancer patients and my personal connection as a patient's relative led me to join. The SCS team has welcomed and guided us through the facility and our roles. I have had touching conversations with patients who shared their experiences and coping mechanisms. Each volunteering session introduced me to compassionate individuals who generously shared their knowledge. The team feels like a supportive family, and I am grateful for this enriching experience. ”

Kate

With boundless enthusiasm and infectious laughter, Kate, Rituparna, and their fellow volunteers infuse each exercise session with camaraderie and joy. They stand not as mere observers but as companions, walking alongside cancer patients on their journey to recovery.

In the face of adversity, they offer not pity but strength. Not sympathy, but solidarity. Their presence serves as a constant reminder that, in the battle against cancer, no one fights alone. Through their selfless dedication, Kate and Rituparna embody the spirit of community care that transcends borders, cultures, and circumstances. They remind us that extending a helping hand can bridge the widest of chasms in a world often marred by division.

CREATING LASTING LOVE: STORIES OF STRENGTH, RESILIENCE AND HOPE

In the labyrinthine journey of cancer, where every twist and turn brings new challenges, SCS' Hospice Care Services team stands as a steadfast ally for those traversing the final stretch of their battle. As they courageously live out their lives with cancer, we ensure they find solace and comfort surrounded by their loved ones.

STRENGTH IN HOME-BASED RESPITE CARE

For many advanced cancer patients, home emerges as a sanctuary – a haven where cherished memories reside and where one wishes to spend their final moments. Recognising this profound desire, SCS proudly champions the Home-Based Respite Care (HBRC) programme, a hope for families caring for loved ones with terminal illnesses at home. Through our steadfast collaboration with many community agencies, we extend a lifeline to those yearning for the familiar comforts of home. For 2023, we have successfully enrolled 22 patients into the HBRC programme, providing support as they embark on their final journey from the comfort of their abode.

Total Number of
HBRC referrals
in 2023:

26



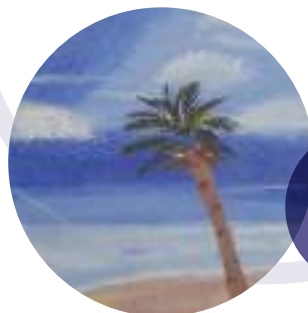
Madam Rokiya

STORIES OF RESILIENCE AND CONTRIBUTION

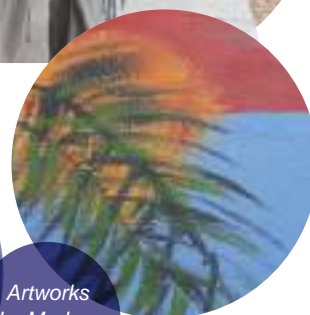
Despite their challenges, our patients can serve as inspiration for the community, spreading their positivity and strength to others. Take, for instance, the indomitable spirit of Mr Suhaimi, a former police officer, whose battle against terminal Prostate cancer has not dimmed his resolve nor dampened his spirit. Despite facing his mortality, he remains resolute in his commitment to caring for his beloved wife, a testament to the enduring power of love and selflessness. His journey is an inspiration – a reminder that even in the face of impossible odds, one can find purpose, meaning, and joy in giving back to others.



Mr Suhaimi



Artworks
by Madam
Rokiya



Then there's the remarkable tale of Madam Rokiya, whose courage and zest for life defy the confines of her diagnosis. Madam Rokiya, who loves art, used painting to cope and express her emotions about living with cancer. Her story witness the resilience of the human spirit, a radiant hope illuminating the path for others facing similar adversities.

COMPASSIONATE CARE IN ACTION



Madam
Rapeah
Binte
Kitan

Madam Rapeah was a bedridden 74-year old home hospice cancer patient. With her condition deteriorating, her daughter, Faizah, faced challenges as a caregiver for her mother. SCS activated the Nurse Aid Programme from the Home-Based Respite Care (HBRC) to provide vital support to Faziha in ensuring high-quality care for her mother. The additional support to secure a helper enhanced the whole of their caregiving experience for Madam Rapeah. With the home hospice care team able to provide targeted support, individuals like Faizah benefit from home visits and 24/7 on-call systems.

“ On behalf of my late mother Madam Rapeah Bte Kitan, I wish to thank you and your team from SCS for all the help and guidance during our hard times. I can’t imagine what we will go through without the help of your team. SCS is there to help us in our hardest moment. I know during my mom’s last days, you and your team did the very best to help her go peacefully. I, her daughter, appreciate it so much. Please thank you team on my behalf. KUDOS. ”

- Faizah, Daughter of the late Madam Rapeah Bte Kitan

LOVE, DIGNITY, AND MEANINGFUL MOMENTS

In the twilight of life, love sustains us, dignity defines us, and meaningful moments imbue our journey with purpose and grace.



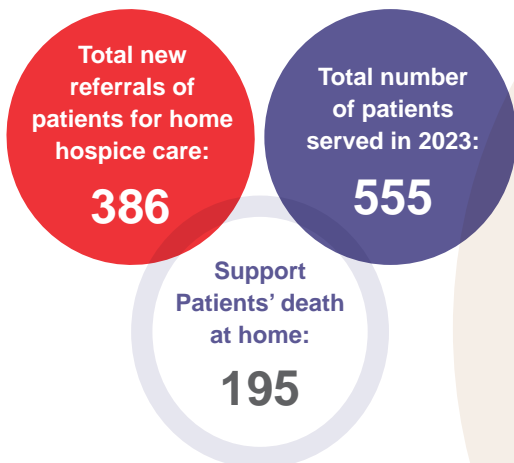
Madam
Gan
Ah Nea

Madam Gan Ah Nea was SCS’s home hospice patient since February 2022. At the age of 98 years old, she was diagnosed with dementia and cancer. She was able to maintain a sense

of dignity and pride through her skillful colouring and drawing of her favourite animals. With the support of her committed daughters, Sai Gek and Gek Choo, and the assistance of SCS’ Art Therapists, her wish to go to the Sea Aquarium was fulfilled. Madam Gan was also able to receive SCS’s medical nursing care in the comfort and familiarity of her home. This ensured that her symptoms were well managed.



LOOKING FORWARD WITH COURAGE AND COMPASSION



As we gaze toward the horizon of possibility, let us draw inspiration from these tales of strength, resilience, and hope. In the tapestry of life, every thread and story adds to the richness of our collective experience. With courage in our hearts and compassion as our guide, we can continue to empower, uplift, and inspire one life at a time. Together, we can make a difference towards a profound impact transcending the boundaries of illness and adversity, illuminating the path towards a brighter, more compassionate future for all.

“ Dear Singapore Cancer Society Team,

This is to sincerely extend my deepest appreciation to the team of ANGELs and Doctors whom had provided their unconditional care and professional medical services to my late father, Mr Lee Ho Liang who left us on 4 May 2023.

It would be extremely bad for me and my family if without the help and care from your team who worked around the clock, even on weekends which provided us with the utmost comfort and assurance in such a difficult time.

There were quite a few nurses and doctors that extended their care to us and it was so heart warming to receive such service from the [Singapore Cancer] Society. With special compliments to Ms CaiXia who extended her unconditional care and help to us even after her working hours and [on] her off days. Thank you. ”

- From the family of Mr Lee Ho Liang

A JOURNEY OF STRENGTHENING, INNOVATING, AND THRIVING

SCS continues to redefine the landscape, enriching the lives of patients and caregivers. Through our commitment to provide impactful psychosocial support to strengthening our programmes by incorporating evidence-based findings and supporting our beneficiaries as they integrate back into the community, SCS paves the way for a future filled with hope, healing, and empowerment.

PSYCHOSOCIAL SUPPORT CASEWORK AND COUNSELLING

At the heart of our mission lies a steadfast dedication to providing unparalleled psychosocial support to cancer survivors and home hospice patients. In 2023, SCS ran more than 1,400 counselling sessions and served more than 500 clients. Our Psychosocial Services team are always ready to offer emotional support, guidance and solace to those who need them the most. We offer a lifeline to those navigating the turbulent waters of cancer diagnosis and treatment.



BEFRIENDING AND SUPPORTING THE CANCER COMMUNITY

In addition to our counselling services, the Patient Ambassador and B.E.A.C.O.N (Befriend, Educate, Advocate, Cancer Outreach Network) Volunteer programmes serve as pillars of support for individuals grappling with the challenges of cancer. With 36 patient ambassadors referred and 13 matched in 2023, and 67 active ambassadors since the programme's inception in 2018, we continue to foster a

community of strength, resilience, and shared experience. Similarly, the B.E.A.C.O.N Project, which saw 608 volunteers trained in 2023 and a total of 1,519 volunteers trained since the programme launch in 2021, empowers individuals to befriend, educate, and advocate for those affected by cancer, amplifying our impact and reach within the community.

STRENGTHENING SPECIALIST PROGRAMMES, THROUGH EVIDENCE-BASED FINDINGS

SCS consistently exemplifies our commitment to innovation and excellence towards strengthening our services and programme. Through poster presentations at prestigious conferences such as the Korean Society of Medical Oncology (KSMO) Conference and the Singapore Palliative Conference (SPC), we share evidence-based outcomes and insight that help social workers to refine psychosocial interventions with patients and their families more effectively. 2023 was a year SCS embarked on a number of pilot studies with a view to fortify our psychosocial programmes.

Furthermore, our Art Refresh programme conducted in collaboration with the National Gallery Singapore, has yielded remarkable results, with participants experiencing profound emotional and psychological benefits that we did a second run. We examined whether a community-based programme can support the well-being of cancer survivors in remission. The pilot study suggests that the Gallery can serve as a restorative environment for cancer survivors who experience fatigue. The environment brought participants away from the routine of everyday life, while the programme activities enabled personal, social and cognitive growth through art appreciation.

SCS evaluated our L.I.G.H.T. Therapeutic Groupwork for advanced-stage cancer patients. After five sessions, participants felt that through their interactions, they were able to be more accepting of their diagnoses. Participants also experienced a greater sense of appreciation of themselves, those around them and a stronger understanding of their situation. This allowed the patients to better manage their emotions which in turn gave them a more grounded outlook towards life – many of whom decided to give back to the community through volunteer efforts. Such research findings allow healthcare workers to better understand the psychological, social and emotional needs of the advanced-care survivors.

In 2023, we introduced Forest Bathing – a Japanese practice of immersing oneself in nature to cultivate a holistic well-being. This experience promotes relaxation, reduces stress, and profoundly connects with the natural world. With significant improvements in energy restoration among participants, as measured by the domains of the Energy Restoration Framework, our Forest Bathing pilot programme represents a paradigm shift in holistic cancer care.



SCS Forest Bathing Programme.

Here are some feedback from our participants who participated in Forest Bathing:

Energy Restoration Domains	Group Improvements (%)
Nurturing	4%
Expansive	9%
Purposeful	9%
Connection & Belonging	10%
Fascination & Stimulation	9%

INTEGRATING BACK INTO THE COMMUNITY

As cancer survivors journey towards recovery and renewal, SCS stands as a steadfast ally, supporting their transition into the community. Through initiatives such as our Return-to-Work programme, we empower survivors to reclaim their independence and pursue meaningful employment opportunities. With **95 cancer survivors supported** since the programme's inception in 2020 and improved perceived work ability among participants, we celebrate their resilience and determination in adversity.

As we look to the future, let us draw inspiration from the stories of strength, resilience, and hope that define our journey. With dedication and a bold vision for tomorrow, SCS continues to lead the charge in transforming lives and shaping a brighter, more hopeful future for all affected by cancer. Together, we rise, innovate, and thrive – empowering each other to embrace life's challenges with courage, compassion, and steadfast determination



SCS SURVIVORSHIP CENTRE LEADS THE WAY INTO A BRIGHTER FUTURE

In the realm of cancer care, a new dawn has emerged with the unveiling of the Survivorship Centre by SCS in 2023. This monumental achievement is not just a mere addition to our healthcare landscape; it is a manifestation of SCS' ability to support beneficiaries with a full suite services from cancer prevention and control, cancer rehabilitation treatment and recovery to end-of-life support.

Cancer survivorship, a journey fraught with challenges and triumphs, necessitates a holistic approach that transcends mere treatment. It encompasses a tapestry of care that spans from diagnosis to the triumphant beyond, empowering individuals to survive and thrive in the face of adversity.

The Survivorship Centre, nestled within Woods Square Tower 2, serves as a sanctuary for our survivors. It is a place where stories intertwine, courage is celebrated, and hope springs eternal. Within its walls, survivors find solace in camaraderie, strength in shared experiences, and inspiration in collective resilience.

Our Survivorship Centre provides a plethora of programmes and services, some of which are highlighted below.

Members of the public can collect their Faecal Immunochemical Test (FIT) Kit from the SCS Survivorship Centre and receive referrals for subsidised mammograms and PAP HPV tests at SCS Clinic @ Bishan.

Statistics testify to our impact, a tangible manifestation of our dedication. With 974 unique patients under Cancer Survivorship Navigation and 312 referrals made, each represents a life touched, a soul uplifted, and a journey empowered.

INFORMATION CENTRE & CANCER CARE NAVIGATION



Beneficiaries under Cancer Care Navigation:

974

Our Cancer Care Navigators proactively assist and guide members along their cancer journey, ensuring access to holistic resources and services.

SPECIALISED SUPPORTIVE SERVICES



Cancer Care referrals to specialised supportive services:

312

Members receive referrals to specialised services like Cancer Rehabilitation, Psychosocial Support, Welfare Assistance, and Home Hospice Care.

SCS CANCER SUPPORT GROUPS & ENRICHMENT PROGRAMMES

Number of sessions under open social support groups:

53

Number of courses:

87

Number of Enrichment classes:

249



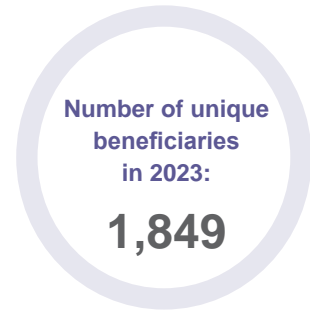
Number of attendees for support groups and enrichment programmes:

3,442

Offering support for five cancer support groups and over 12 enrichment programmes, including fitness dance, painting, calligraphy, qi gong, tai chi, yoga, and more.

SINGAPORE CANCER SOCIETY EASES FINANCIAL IMPACT OF CANCER TREATMENTS

SCS strives to support the Singapore Community from low and middle-income families by providing a range of welfare and financial assistance schemes they can apply to alleviate the initial financial burden faced by high medical costs.

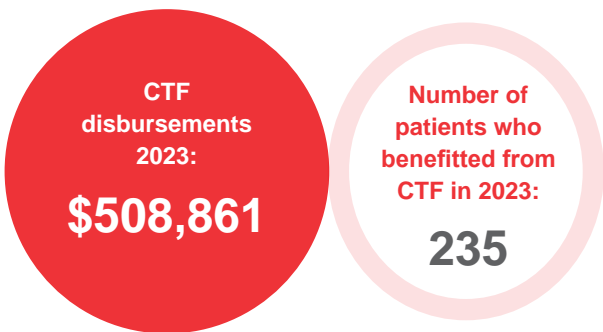


THE SCS CANCER TREATMENT FUND (CTF) AND THE CANCER DRUG LIST

The CTF was established with the belief that financial difficulty should never stand in the way of receiving life-saving treatment. Since its inception in 2005, SCS has disbursed \$20.4 million in aid and assisted 6,198 patients who were referred by their doctors and/or medical social workers from restructured hospitals. We also worked closely with pharmaceutical companies to provide access to critical medicine through the Patient Access Programme (PAP) so that patients have access to necessary treatments.

The introduction of the Cancer Drug List (CDL) by the Ministry of Health in September 2022 marked a significant moment in Singapore’s fight against cancer. This bold initiative, comprising clinically proven and cost-effective treatments, has revolutionised access to vital medications for patients nationwide. Through strategic negotiations and subsidies, more than 80% of patients in public health institutions now have access to a broader spectrum of subsidised cancer drugs than ever before.

SCS Cancer Treatment Fund

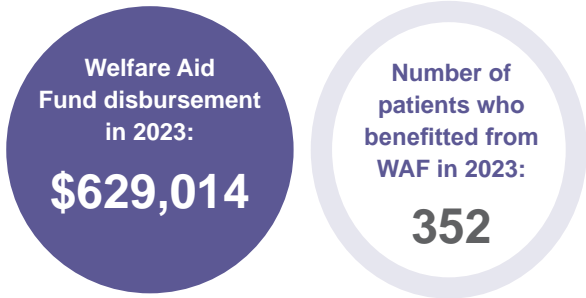


At SCS, we recognised the transformative potential of the CDL from the outset. SCS conducted an impact study to assess implications and identify possible gaps in areas where additional support can be provided. The impact study revealed invaluable insights into the evolving landscape of cancer care.

In 2023, SCS undertook a comprehensive analysis to refine our disbursement model and enhance support for our beneficiaries. As inflation rates soared and expenses escalated, we have expanded our Cancer Treatment Fund coverage effective from 1 May 2023 to increase the subsidy quantum and including coverage beyond scans and lab investigations, ensuring no patient would be left behind.

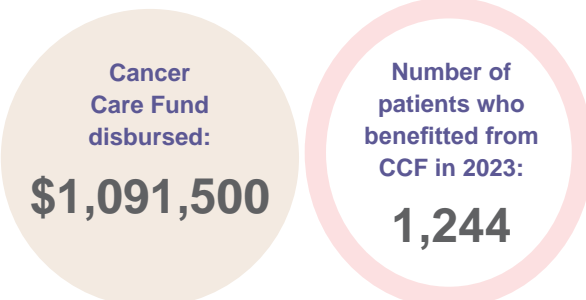
SCS Patient Access Programme (PAP)	Medicine
SCS-Takeda	Brentuximab
SCS-Roche PAP	Perjeta+Herceptin, Kadcylla, Tecentriq, Tecentriq+Avastin, and Alecensa

SCS Welfare Aid Fund



Founded in 1964, the SCS Welfare Aid Fund (WAF) has been a lifeline for cancer patients and their families, offering crucial financial assistance during and after treatment to enhance the well-being of needy patients in an attempt to ease the heavy burden of expenses. It provides support for household items that families may require such as milk, diapers and medical equipment. Since its inception, SCS has disbursed \$16.9 million in aid and assisted 7,352 patients.

SCS Cancer Care Fund

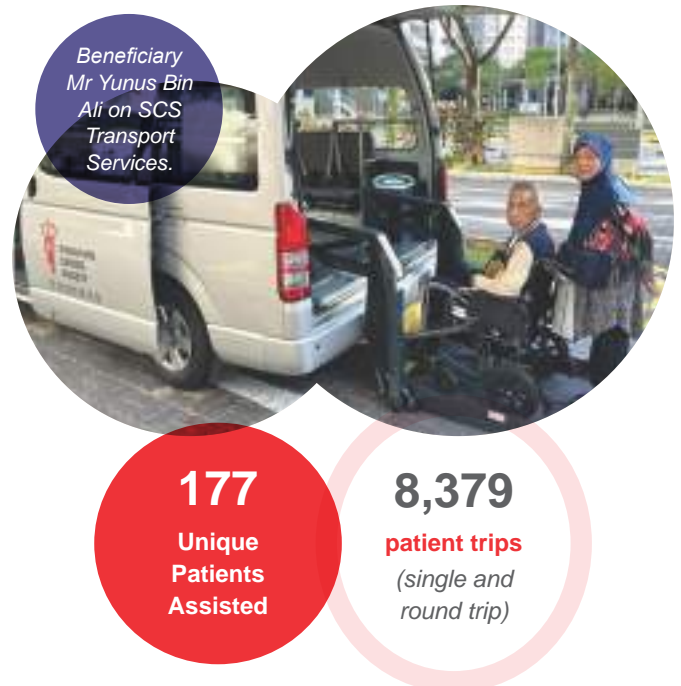


The SCS Cancer Care Fund (CCF) embodies our commitment to providing immediate support to newly diagnosed patients offering a one-time financial gift within the patient's first six months of diagnoses. This initiative aims to alleviate financial burdens and ensure patients can focus on their recovery without the added stress of financial worries. To date, SCS has disbursed nearly \$9.1 million in aid and assisted 10,094 patients.

BEYOND TREATMENT: A HOLISTIC APPROACH TO SUPPORT CHILDREN AND YOUTH

At SCS, our commitment extends far beyond the realms of medical treatment. We understand that cancer affects not only patients but also their loved ones, especially children and youth. Through initiatives such as the Help the Children and Youth Programme, supported by partners like SingTel who pledged \$250,000 annually, we provide emotional and academic support to young individuals navigating the challenges of a cancer diagnosis within their families.

ENSURING ACCESSIBILITY: HOME-HOSPITAL TRANSPORTATION PROGRAMME



Transportation should never be a barrier to accessing life-saving treatment. That is why SCS introduced the Home-Hospital Transportation Programme, providing eligible patients the assistance they need to travel to and from medical appointments, radiotherapy, or chemotherapy sessions. With thousands of patients benefiting from this initiative, we are proud to ease the financial burden for families facing the challenges of cancer treatment.

BUILDING RESILIENCE: SCS HOME TUITION PROGRAMME

Our home tuition programme is designed to provide support for financially needy children and youth who are struggling academically and impacted by cancer, whether as a patient or a family member. SCS recruits qualified tutors to offer free one-to-one home tuition services, with the aim of improving their academic performance and emotional well-being. By doing well in school, the programme also helps to boost their confidence and self-esteem, while alleviating the concerns and worries of their family members.

29
children and youth enrolled for the SCS Tuition programme

CELEBRATING RESILIENCE: THE SCS ACHIEVEMENT AWARDS



Every success deserves to be celebrated, especially in the face of adversity. The SCS Achievement Awards recognise the remarkable achievements of students under our Help the Children and Youth Tuition Programme who have excelled academically despite the challenges of a cancer diagnosis within their families.

SCS Achievement Award Recipients:
34

FOSTERING COMMUNITY: FAMILY ENGAGEMENT EVENTS



Families visit the Singapore Science Centre.



At SCS, we understand the importance of community and support networks in cancer recovery. That is why we organise engaging outings and workshops for our beneficiaries, fostering a sense of camaraderie and belonging amidst the trials and tribulations of cancer. From Science Centre visits to hands-on workshops, these events provide respite and joy for families impacted by cancer.

STRATEGIC THRUST 4:

RALLYING GREATER COMMUNITY ACTION



Greater community action embodies the Singapore Cancer Society's (SCS) commitment to galvanising Singaporean society towards a future where support for the cancer community knows no bounds. With bold initiatives and forward-looking strategies, we ignite a spirit of empowerment, driving impactful change. Consider our annual Relay for Life — an overnight relay that unites participants and serves as a platform to rally support and resources for those affected by cancer.

DRIVING CHANGE, INSPIRING ACTION

In the race against cancer, every step forward counts. We celebrated monumental victories this year at our flagship events, Singapore Cancer Society – TalkMed Relay for Life (RFL) and SingTel – Singapore Cancer Society Race Against Cancer (RAC). These events rally communities together in a unified front against this relentless foe.

RFL returned in full force after navigating the challenges of the Covid-19 pandemic. In 2023, we witnessed the triumphant return of RFL, drawing a massive surge in participation. It was a reminder that while cancer may keep us physically distant at times, our spirit of solidarity knows no bounds.

President Halimah flagging off the survivors' lap at the RFL event.



More than **1,000** participants took part in the virtual challenge from 4-13 March 2023

RFL raised more than **\$1.1** million

3,957 Individuals from public, private and people sectors participated overnight at the physical event



Dr Tan See Leng, Minister for Manpower & Second Minister for Trade and Industry, with SCS and Singtel representative at the RAC's 15th Anniversary photo booth.

RAC raised more than **\$1.5** million

5,441 participants attended the physical event

At RAC, we marked a significant milestone – the 15th anniversary of our relentless pursuit of progress. With each passing year, our resolve only grows stronger. In 2023, we achieved something remarkable, raising the most funds since the race's inception in 2009. Through the collaborative efforts of CEOs Against Cancer, corporate donors, and our dedicated participants, we

rallied together to generate over \$1.5 million in support of SCS programmes and services. These funds contribute to vital initiatives such as the Help the Children and Youth Programme (HCYP), Cancer Care Fund (CCF), Cancer Rehabilitation Fund (CRF), Cancer Treatment Fund (CTF), and Welfare Aid Fund (WAF) for those facing financial hardships.

This milestone is not just a number; it also shows the dedication of our participants, supporters, and volunteers. Together, we have shown that when we stand united, we are unstoppable.

CHARITY AMBASSADORS: CATALYSTS FOR CHANGE

In 2023, SCS's Charity Ambassadors spearheaded fundraising efforts, utilising diverse methods like donating book royalties and hosting spin and yoga classes to support cancer beneficiaries.

Their creative initiatives and dedication inspire us to effect positive change and leave a lasting impact in the fight against cancer.



IGNITING GENEROSITY

Held from 1 to 7 December every year, Giving Week holds profound significance at SCS. It is a time to forge connections, bridge divides, and rally communities to support our cancer warriors. Under the resounding theme “Give Life, Give Cheer, Give SCS,” we harness the collective energy of our supporters to make a tangible difference in the lives of those affected by cancer.

Throughout the week, SCS runs roadshows, events and booth outreach to raise awareness, raise funds and most importantly, raise spirits of cancer survivors and their caregivers.

One highlight of our Giving Week festivities is the opportunity for donors to receive a token of appreciation – a beautiful reversible knot bag designed by two remarkable cancer survivors, Yoke Leng and Jacqueline Bek, from the SCS OpenHeART Art Therapy programme. Their design, blending Christmas and Lunar New Year elements, serves as a tangible symbol of resilience, creativity, and the enduring spirit of hope.

With that, we extend our heartfelt gratitude to our esteemed partners who stood by our side during this transformative week, Faith Methodist Church, illumina, Metro, Marina Bay Alliance, The Clementi Mall and La Salle College of the Arts.



Volunteers at Faith Methodist Church.



Reversible knot bag designed by cancer survivor, Yoke Leng and Jacqueline, of reversible Christmas or Lunar New Year design, displayed at Metro.

OUR VOLUNTEERS

CELEBRATING OUR VOLUNTEER HEROES

In the remarkable year of 2023, our dedicated team of volunteers played an instrumental role in contributing to the community. Their commitment was driven by the passion and selflessness of each individual, making a unique impact on the lives they touched. Beyond individual efforts, we were fortunate to collaborate with volunteers from schools, communities, and corporations, fostering a spirit of collective responsibility and shared purpose.

Our volunteers are the heartbeat of our organisation, and their impact knows no bounds. Thank you for being the driving force behind our shared vision.



VOLUNTEER APPRECIATION NIGHT 2023

On 4 December 2023, we celebrated our remarkable volunteers under the theme “TEAM SCS – Together Everyone Achieves More @ SCS.” Their selfless dedication fuels our success year after year. This night was not just about gratitude but sparking curiosity and passion. Through interactive booths showcasing SCS services and volunteer achievements, we encouraged the exploration of new roles and potentials. As we embrace the future with optimism, we are ready to conquer challenges and touch more lives.

To our exceptional volunteers: you are the heartbeat of our organisation. Together, we achieve the extraordinary.

Our steadfast volunteers of 2023 were honoured with unique curated gifts tailored to their invaluable contributions.



RALLYING THE VOLUNTEERS

KNIT OF LOVE & CROCHET OF LOVE: STITCHING TOGETHER HOPE



Volunteers of the Crochet of Love programme proudly display their finished crochet creations.

614

Hours spend weaving love into every stitch, creating warmth and hope for those in need

72

Dedicated volunteers

SCS's Knit of Love and Crochet of Love programme is a compassionate movement that goes beyond crafting and fostering kindness with every stitch. We are grateful for Elsie Koh, Karen Chan, and Nancy Mak's contributions in spreading this joy. Let's persist in our purposeful knitting and crocheting, recognising that each stitch brings us nearer to a more compassionate world.

BENEFICIARIES SUPPORT



Prep Zone Academy volunteers prepping for their Exercise Buddy role after orientation, ready to support our patients.

Our committed volunteers in programmes like Exercise Buddy and Guardian Angel support cancer patients, offering wellness sessions and medical escort services. Through their dedication, they create a nurturing community within SCS, enriching the lives of beneficiaries and promoting overall well-being.

FESTIVE CHEERS

In the spirit of significant festivals, SCS's Festive Cheer with a Heart programme brings together corporates, community groups, and influencers to spread joy and companionship to our beneficiaries.

10

Corporates

230

Volunteers

754

Hours dedicated to packing and distributing festive goods



Influencer Xixi Lim spreading Chinese New Year Festive Cheer with our cancer warrior.

Food pack sponsorship:

48 Packs	SiteCore
24 Packs	Satarious
35 Packs	IDC Asia Pacific
30 Packs	Wacker Chemicals Asia Pte Ltd
20 Packs	Celanese Singapore
25 Packs	Outsource Asia Industries (2008) Pte Ltd
21 Packs	Guardant Health AMEA
20 Packs	Detpak Holdings Pte Ltd
29 Packs	Tower Research
20 Packs	Solis Breast Cancer Pte Ltd

This year, influencers like Xixi Lim and Munah Bagharib have also shown their commitment to our cause, amplifying our message of support for cancer initiatives. As we celebrate our achievements, let us look ahead with hope and determination, knowing that together, we can continue to make a meaningful impact in the lives of others.

SWEET HOME PROJECT: BUILDING BONDS, CREATING BEAUTY



Volunteers from Credence Enterprise generously repainted the home of our SCS patient at their own expense.



Volunteers hard at work to paint the room of our patients.

At SCS, the Sweet Home project transforms lives by improving living conditions and building connections through home maintenance activities. Through collaboration, it creates uplifting physical spaces and interpersonal relationships, contributing to a brighter future, one step at a time.

EMPOWERING MOMENTS: CORPORATE PARTNERS IN ACTION



HarbourVest Partners (Singapore) Pte Ltd brought our beneficiaries from SCS Rehabilitation Centre for a leisure walk at Gardens by the Bay.

We are grateful to Temasek T-Touch House of Grace, Great Eastern, Illumina Singapore, and HarbourVest Partner (Singapore) Pte Ltd for sponsoring outings for our beneficiaries and bringing joy to those facing cancer. Their commitment to enhancing lives strengthens our resolve to uplift those in need.

MINI RELAY FOR LIFE: EMPOWERING TOMORROW'S LEADERS



The Remembrance segment organised by Eunoia Junior College's students under the school's Talent Development Programme, *GLIDE*.



Nan Chiau High School hosted a mini Relay for Life on 25th May 2023, in collaboration with their Physical Education department's annual event, "Cross Country".

Our journey to expand RFL's impact led us to introduce Mini RFL events, engaging youth leaders in community philanthropy. Eunoia Junior College, Nan Chiau High School, Raffles Institution, and the School of Science & Technology joined this year, reflecting significant growth. We are grateful for their vital roles and look forward to continuing to empower the next generation with their support.

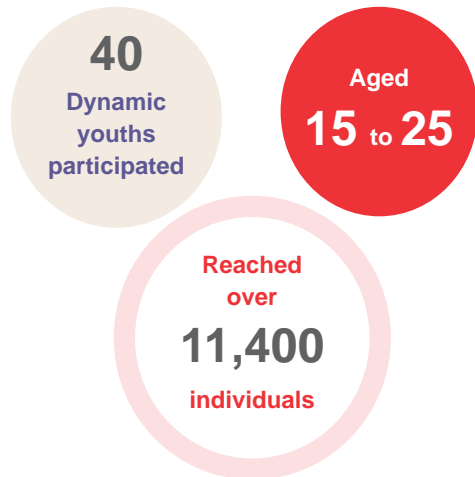
SCS CHARITY DRAW 2023: UNITING FOR CHANGE

In partnership with Singapore Pools, SCS held its first Charity Draw in 2023, selling tickets at 300 branches and outlets. **Thanks to public and Singapore Pools' support, we raised an incredible \$115,962.**



Winners were celebrated during the live draw on 18 May 2023, and unclaimed prizes were generously donated to SCS programmes and services. This event showcased the power of collaboration and compassion in driving positive change.

YOUTH FOR CAUSES: SPARKING CHANGE, INSPIRING HOPE



The YMCA initiative nurtures social entrepreneurship and community leadership, offering seed funding for teams to implement their ideas. Ten teams, including Project Lavande from CHIJ St. Nicholas Girls' School, were honoured, underscoring their dedication and success across multiple categories.



Project Lavande hosted a fundraising concert called *Étoile* to support their cause.



Minister Sun Xueling, Minister of State, Ministry of Home Affairs and Ministry of Social and Family Development graced Project Lavande's Concert *Étoile* to support the youth volunteers.

Through workshops and concerts, these youths demonstrate resilience and passion, ensuring that no one faces cancer alone and inspiring hope for a future where compassion and action can change lives.

ILLUMINATING HOPE, A GLOWING TRIUMPH FOR SCS

In a spectacular display of brilliance, ChariTrees 2023 cast its radiant glow upon the Marina Bay Waterfront Promenade, transforming it into a luminous wonderland from 20 November to 26 December 2023.

For the first time, the SCS stepped into the spotlight of ChariTrees, seizing the opportunity to spread hope and joy. There were a total of 80 trees in light up Marina Bay, with the strong support of nine generous corporate partners, SCS adorned the promenade with 18 specially crafted Christmas trees.

But these trees were more than mere decorations; they were symbols of resilience, reminders that hope prevails even in the darkest of times. Together, we illuminated the hearts of all who beheld the spectacle, infusing the year-

end holiday season with a spirit of unity and generosity.

Through our collective efforts, we ignited the festive spirit and **raised over \$148,000** for the Singapore Cancer Society. These funds, a manifestation of the power of the community, will be channelled into supporting SCS programmes and services, ensuring that those affected by cancer receive the care and support they deserve.



ChariTrees 2023.

CORPORATIONS, SOCIETIES, INTEREST GROUPS FUNDRAISE FOR SCS

CYCLE FOR HOPE 2023: RIDING FOR CHANGE

Organised by the Singapore Cycling Federation for the second year, Cycle For Hope **raised an impressive \$117,143** for SCS.

Dr Hing Siong Chen, President of the Singapore Cycling Federation, presenting a cheque to our CEO. Minister Baey Yam Keng, Senior Parliamentary Secretary, Ministry of Sustainability and the Environment & Ministry of Transport is a witness for this fundraising event.



Over two months, participants completed a Cycling Challenge Event, promoting an active lifestyle and cancer awareness. The event concluded with a leisure ride at the Singapore Sports Hub, symbolising unity and determination in the fight against cancer.

KEPPEL GOLF DAY 2023: DRIVING IMPACT



Mr Loh Chin Hua, Chief Executive Officer and Executive Director of Keppel Ltd, presenting a cheque of \$100,000 to our CEO.

At the 45th Keppel Golf Day hosted by Keppel REIT, golfers came together to support SCS through personal or corporate donations. With a generous contribution from the Keppel Foundation, they **raised \$100,000** for SCS, showcasing corporate responsibility and community engagement while turning a day on the green into a force for good in the fight against cancer.

ROW FOR HOPE 2023 & GALA DINNER: UNITING FOR PROGRESS



Participants from SCS's Purple Dragons and representatives from the Lupus Association engaged in a friendly dragon boat race.



SCS' Purple Dragon Team, received medals from Minister Edwin Tong, Minister for Culture, Community and Youth & Second Minister for Law.

Row of Hope is an annual fundraising event organised by the Oxford and Cambridge Society of Singapore. SCS was the society's adopted charity for this year's fundraising event. Our Purple Dragon team triumphed in a friendly race at the Row For Hope 2023 and received medals from Minister Edwin Tong, Minister for Culture, Community and Youth & Second Minister for Law. Additional funds were raised for SCS at the gala dinner held at the Goodwood Park Hotel, with an additional \$15,000 donated by AstraZeneca.

LAGUNA BINTAN X THE PAR CLUB CHARITY GOLF 2023: TEEING UP FOR CHANGE



Participants for Charity Golf, organised by TwentyTwo Holdings, held at Laguna Bintan.

Organised by TwentyTwo Holdings, the Par Club charity golf event held at Laguna Bintan raised \$40,137 for SCS. The impact of their generosity speaks volumes, driving positive change in the fight against cancer.

GREAT EASTERN WOMEN'S RUN 2023

The 17th edition of the Great Eastern Women's Run (GEWR) was held on 29 October 2023 at the Singapore Sports Hub. SCS is once again privileged to be chosen as one of GEWR's beneficiary, together with Daughters of Tomorrow (DOT).



Cheque presentation to the two beneficiaries together with the top fundraising team from Great Eastern.

Through the efforts of fundraisers, donations from corporate partners and runners, and contributions from members of the public, a total amount of \$260,000 was raised, of which **\$129,500 was donated to SCS**. The event saw over 9,000 participants taking part in the event, with Straits Times interviewing our beneficiary, Madam Xanthe on reasons for participating in the event as well as how SCS had supported her throughout her cancer journey.

DRIVING CANCER RESEARCH

UNVEILING THE FUTURE OF CANCER CARE THROUGH RESEARCH

Research is at the forefront of the Singapore Cancer Society (SCS) as we continuously seek to improve how we serve the cancer community.

Aside from leading in-house research which aim to deepen the understanding of cancer screening and prevention to inform future initiatives, transform cancer care and improve the quality of life for those affected by the disease, SCS also supports local cancer research through our annual research grant call to drive transformative advancement in patient care.

IN-HOUSE RESEARCH TO DEEPEN THE UNDERSTANDING OF CANCER SCREENING AND PREVENTION

Examining gender differences in factors affecting Colorectal Cancer (CRC) screening compliance in Singapore

Published on Asian Pacific Journal of Cancer Prevention
Presented at Singapore Health & Biomedical Congress 2023

This study evaluated gender differences in Colorectal Cancer (CRC) screening compliance in Singapore, focusing on screening belief and knowledge. Among participants aged 50 to 69, only 20.9% complied with CRC screening guidelines. It was found that compliance were associated with knowledge of screening guidelines for both genders, while men in older cohort and women with a family history of cancer and strong belief in routine screening were more likely to comply. Targeted interventions should address gender-specific factors and emphasise the significance of CRC screening guidelines as a crucial component of cancer education.

A Cross-Sectional Study: Factors influencing Human Papillomavirus (HPV) Vaccination uptake among young women aged 18-26 years in Singapore

Presented at Singapore Health & Biomedical Congress 2023

This study aimed to identify factors influencing HPV vaccination among young women aged 18 to 26 in Singapore. Findings showed only 18.4% received the vaccine, with those of Chinese ethnicity and higher education positively linked to uptake. Greater knowledge about HPV and vaccination correlated with higher vaccination rates. Importantly, many unvaccinated women expressed interest in vaccination after education, emphasising the need for targeted interventions to improve uptake, particularly among minorities and those with lower education.

IN-HOUSE RESEARCH TO RE-SHAPE FUTURE APPROACHES TO CANCER CARE, REHABILITATION AND ENHANCE THE QUALITY OF LIFE FOR SURVIVORS

Psychosocial factors associated with place of death

Presented at Singapore Palliative Conference 2023 and 15th Asia Pacific Hospice Palliative Care Conference 2023

This study aimed to explore the factors influencing the place of death among cancer patients receiving palliative psychosocial services from SCS. Findings revealed that patients who died in a facility, either home hospice or hospital, were more likely to be Indian, unmarried, have lower ability to function independently, and experience more social dignity issues. This underscores the importance of comprehensive assessment of social dignity in palliative care to provide timely interventions. Collaboration among healthcare professionals is needed to develop conversation-friendly screening tools for assessment and work with people on social dignity.

A Mix-Method Study: Exploring Death Acceptance (DA) among home hospice cancer patients

Presented at Singapore Palliative Conference 2023 and 15th Asia Pacific Hospice Palliative Care Conference 2023

This study explored the relationship between DA and Dignity Conserving factors among advanced cancer patients receiving home hospice care from SCS. Findings revealed that patients could accept death, with DA linked to autonomy, maintaining normalcy, self-continuity, pride, resilience, and spiritual comfort. This emphasises the need for holistic support in home hospice care, including involvement of patient in care decisions, preserving daily routines, honouring patient pride and self-identity, fostering resilience, and supporting spiritual connections.

Evaluating the gaps of care of Adolescents and Young Adults with Cancer in an Asian setting

Presented at Korean Society of Medical Oncology Conference 2023

This study aimed to explore care gaps among adolescents and young adults (AYAO) with cancer, identifying nine significant themes: body image, vocation and educational attainment/relationship, fear of cancer recurrence, emotional well-being, information and support access, post-traumatic growth, informal social and online support, caregivers and patients' distress, and identity. Findings also emphasised the importance of recognising differences in care models and priorities between Asian and non-Asian countries, urging the development of cost-effective care models that address these gaps and enhance patient outcomes.

Cognitive Function of Survivors with Non-central Nervous System Cancer and Its Correlates: a Community Rehabilitation Perspective

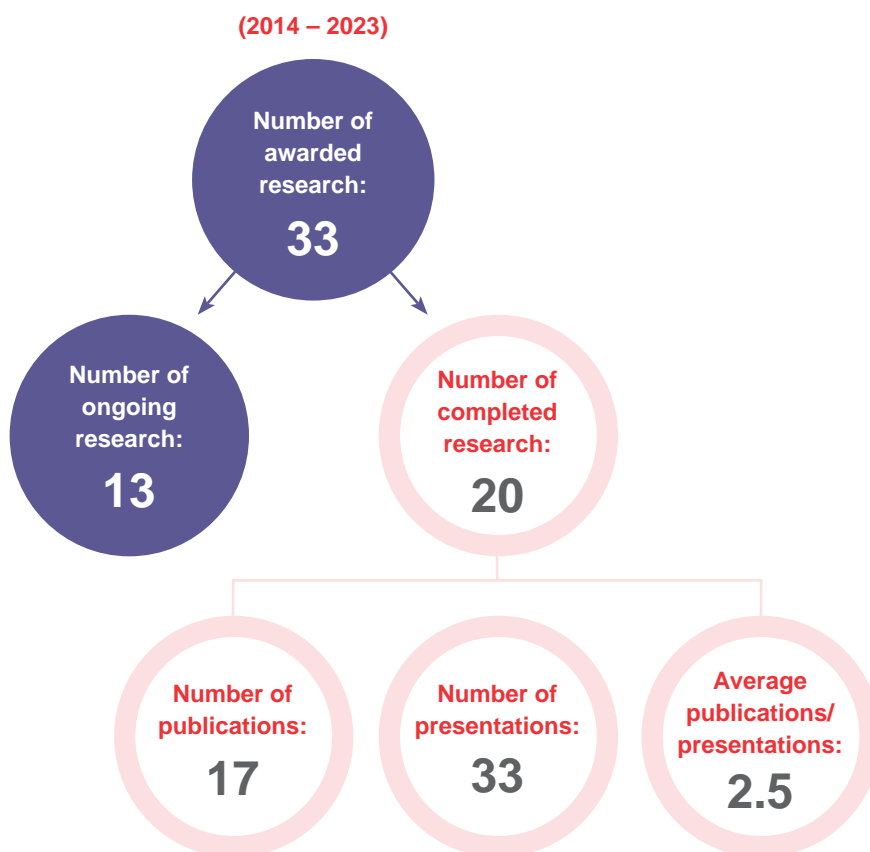
Presented at the European Society for Medical Oncology Asia Congress 2023

This study aimed to describe the cognitive function of cancer survivors attending rehabilitation at SCS and identify its correlates. Despite performing well on objective tests, participants reported reduced perceived cognitive ability and a lower quality of life related to cognition. This discrepancy may be influenced by the relationship of fatigue to working memory. Global evaluation of cognitive function considers cognitive performance across periods of fatigue intensity while objective tests provide information on cognitive performance when tested at a particular time and fatigue level. The findings suggested that managing fatigue, especially mental fatigue, is necessary to support cognitive function.

SCS CANCER RESEARCH GRANT

Through the provision of SCS annual Cancer Research Grant, SCS endeavours to encourage innovative research that improves the quality of treatment and care for cancer patients and quality of life for anyone impacted by cancer. Since 2006, the Society has funded 59 cancer research projects.

In the last 10 years, among 20 completed research (out of the 33 research awarded), an average of 2.5 publications/presentations were accomplished.



RECIPIENTS OF SCS CANCER RESEARCH GRANT 2023

Research Project Title	Grant Recipient	Amount
Evaluating the impact of self-sampling HPV DNA test for cervical cancer screening in a real-world setting: a randomised controlled study	Dr Sabrina Wong Kay Wye National Healthcare Group Polyclinics	\$150,000.00
Remotely Supervised Exercise to optimise outcomes during Androgen Deprivation Therapy (RESORT)	Dr Lee Lui Shiong Sengkang General Hospital	\$100,000.00
The impact of weekly group singing on the happiness and emotional wellbeing in children with cancer at the ARC Children's Centre, in partnership with the Voices of Singapore	Dr Lina Lim Hsiu Kim National University of Singapore	\$50,000.00

COMPLETION OF SCS-FUNDED RESEARCH IN 2023

The Society congratulates the following research teams on their successful project completion in 2023!

Principal Investigator

Dr Miho ASANO

Assistant Professor
Saw Swee Hock School of Public Health
National University of Singapore

Research Title

The lived experience of post-mastectomy tele-rehabilitation and recovery: A pilot feasibility study

Research Period

1 February 2019 to 31 January 2021, extended to 30 November 2022*

Publication(s)

Asano M, Koh GC, Madhukumar P, et al. Study protocol: a pilot quasi-experimental trial of tele-rehabilitation and tele-drain care post-mastectomy. Pilot Feasibility Study. 2021;7(1):39.

Presentation(s)

18th St. Gallen International Breast Cancer Conference 2023

Principal Investigator

Dr Gloria CHAN

Consultant
Department of Haematology-Oncology
National University Hospital

Research Title

Assessing quality of life of patients and their caregivers on Phase I clinical trials

Research Period

1 February 2020 to 31 January 2022, extended to 31 July 2023

Publication(s)

Manuscript under preparation

Presentation(s)

National Cancer Institute Singapore Annual Research Meeting 2022

* Final report received in February 2023

JOINING FORCES WITH MOVEMBER



We understand that the fight against cancer knows no bounds, so we are honoured to renew our partnership with

Movember, a global force committed to revolutionising men's health worldwide. We are igniting a movement that transcends borders, empowering men to live happier, healthier, and longer lives.

In 2023, our collaboration with Movember bore fruit, with fundraising campaigns **yielding over \$320,000** for cancer research in Singapore. But our impact extends far beyond the numbers. Together, we are shining a spotlight

on men's health, amplifying crucial conversations about prostate and testicular cancer issues. We are breaking down barriers, challenging stigmas, and fostering a culture of proactive health awareness.

As we look ahead, we envision a future where every man has access to the resources, support, and knowledge needed to take charge of his health. Through our partnership with Movember, we are paving the way for a world where preventable cancers are no longer a threat, early detection is the norm, and every man can live life to the fullest.

A JOURNEY OF HOPE IN CANCER RESEARCH

“Your Support Transforms Cancer Research!” This powerful mantra echoed through the air at the Terry Fox Run Singapore 2023 at the Marina Barrage on 4 November. For over a decade, this run has stood as a solidarity, uniting with SCS to ignite hope within the cancer community. This year’s physical run, eagerly awaited, saw over 1,000 participants rallying together, **raising over \$6,000** to drive cancer research forward.

In July, the MapleBear Singapore Terry Fox Charity Carnival 2023 – A Zoological Fantasy embraced the spirit of giving, adopting SCS as their beneficiary in support of the Terry Fox Foundation and the Terry Fox Run Singapore 2023. Families poured into Turf City on 15 July 2023, enveloped in joy and determination to make a difference. Among the attendees stood a representative from the High Commission of Canada, along with Mr Darryl Fox, brother of the late Terry Fox.

The carnival surpassed all expectations, **raising over \$180,000**, soaring past their initial target of \$100,000. This staggering achievement is a testament to the power of community, proving that when we come together with purpose, we can move mountains. With each dollar raised, we take another step closer to a future free from the shackles of cancer.

In 2023, SCS also completed the Pilot Research Report: Energy Restoration for Cancer Survivors through Engagement with the Art Collection at National Gallery Singapore and Community Cultural Dimensions. We also completed the research on evaluating the gaps of care of Adolescents and Young Adults with Cancer in an Asian setting with the National Cancer Centre Singapore.



*Mr Albert Ching,
Chief Executive
Officer of SCS
giving a speech
at the Terry Fox
Run 2023.*

PEOPLE MATTERS



Celebrating Community Care at our SCS Survivorship Centre @ Woods Square.



Our Purple Dragon Boating Survivors.

A DYNAMIC JOURNEY TOWARDS PEOPLE FIRST SUCCESS

In pursuing our bold mission to Minimise Cancer, Maximise Lives, our employee value proposition resonates with the heartbeat of the Singapore Cancer Society (SCS). Rooted in the belief that people come first, we have not just relocated but redefined our commitment to cancer care at the National Cancer Centre Singapore (NCCS) Building and the Survivorship Centre at Woods Square. These spaces symbolise a fusion of innovation and compassion, nurturing a community of strength and support.

Reflecting on 2023, we hosted 18 engaging sessions, fostering camaraderie through the Annual Dinner & Dance and Community Care Day events. Our new office isn't just a workplace; it is a sanctuary for hope, housing our Psychosocial Services and Survivorship departments. Embracing balance, we invested over 2000 hours in learning and development, ensuring our team keeps pace with change and leads it.



Festive Cheer Giveaways at SCS.

CORPORATE GOVERNANCE

OPERATING PRINCIPLES & GOVERNANCE POLICIES

Singapore Cancer Society (“SCS” or “Society”) adheres to the principles and guidelines of the Code of Governance for Charities and Institutions of a Public Character (Revised 2017) (“Code of Governance”), the Charities Act, and regulations as governed by the Commissioner of Charities. For the year in review, SCS continued its firm commitment to the governance and sustainability of the Society’s mission.

GOVERNANCE: THE COUNCIL & MANAGEMENT

The Society is governed by a Council of 12 elected members and up to 4 co-opted members, all of whom are volunteers with no business relations with SCS. They are nominated by the SCS Nomination Committee in a formal and transparent process, based on the strength of their personal and professional calibre to contribute to the strategic oversight of the Society. They are elected at the Annual General Meeting (AGM), based on their knowledge, skills, expertise, experience and ability to contribute to the development of the Society. After the AGM, the new Council will elect the office-bearers for a one-year period. Council members will hold office for a term of two years, subject to a maximum total term of ten (10) consecutive years. They can be re-elected after a lapse of not less than two (2) years. The Chairman or Vice Chairman or Secretary or Assistant Secretary cannot hold office for more than ten (10) consecutive years, but such person shall be eligible for appointment to the same post after a lapse of not less than two (2) years. The Treasurer or Assistant Treasurer cannot hold office for more than four (4) consecutive years. However, such persons are eligible for appointment to the same post after a lapse of not less than two (2) years. The Council’s Terms of Reference is reflected in the Constitution. The Council and Management of SCS firmly believe that a genuine commitment to good corporate governance is essential to the sustainability of the Society’s mission to support the cancer community and are collectively responsible in ensuring compliance with the Code of Governance and all relevant laws and regulations. Individual Council members complete a self-evaluation annually to evaluate competencies in specialized fields which may be of benefit to SCS. This is submitted to the Nomination Committee and Council Chairman to review the results. The consolidated submissions are then shared with the entire Council for peer consideration.

ENVIRONMENTAL, SOCIAL AND GOVERNANCE READINESS

The Charity Council issued a revised Code of Governance in April 2023, which recommends that charities conduct their activities with Environmental, Social and Governance (“ESG”) factors in mind and communicate their ESG activities to their stakeholders. To enhance our governance framework further, SCS is proactively boosting its ESG readiness.

In view of the revised Code of Governance (April 2023), SCS is committed to keep our activities environmentally friendly and sustainable; to maintain and further cultivate strong connections with our stakeholders and upholding the highest governance standards. Further, to ensure ongoing accountability, the Council approved in November 2023 to set up an ESG task force. This body will coordinate SCS’s ESG efforts systematically, align them with the organisation’s strategic plan and operations, as well as stay abreast of governance guidelines.

COUNCIL ROLES & COMPOSITION

The Council Members’ Roles:

- Determine the mission and steer organisation towards it
- Guide and ensure effective strategic organisational planning
- Determine, monitor and strengthen the organisation’s programmes and services
- Ensure adequate financial and human resources (Resource Mobilisation)

There are Committees that support the Council in overseeing key areas of accountability, comprising Governance, Advisory & Resource, Administrative & Events, Campaigns and Support Groups. All Committees have Terms of Reference that are approved by the Council. Council members also sit in the Committees to provide oversight. Members of the Committees are carefully selected to ensure diverse expertise, equitable responsibilities, and expert contributions to decision-making in respective management areas. All Committees maintain records of all proceedings, and copies of resolutions passed by such committees, be it at meetings or by resolutions in writing, are provided to the Council.

THE SCS GOVERNANCE AND ADVISORY & RESOURCES COMMITTEES ARE AS FOLLOWS:

Audit Committee	Finance Committee
Investment Committee	Human Resource Committee
Nominations Committee	Tender Committee
Medical Professional and Audit Committee	Cancer Rehabilitation Management Committee
Digital and Technology Committee	Community Health Committee
Cancer Research Panel	Welfare Committee
Community Partnership Committee	Cancer Treatment Fund Committee
Cancer Treatment Fund Sub-Committee (for blood cancer types)	Facilities and Relocation Committee

The roles of the SCS Committees and Terms of Reference can be found at the Portal website
<https://www.singaporecancersociety.org.sg/about/corporate-information/corporate-governance.html>

Full list of Administrative & Event Committees and Advisory Panels can be found at the Portal website
<https://www.singaporecancersociety.org.sg/about/about-scs/sub-committees.html>

THE ORGANISATION LEADERSHIP

The Chief Executive Officer is accountable to the Council for the conduct, coordination and quality of all of the Society's programmes and services. He is assisted by the Management Team.

WHISTLE BLOWING

A Whistle Blowing Policy is in place to drive governance and a systemic flow of information across the organisation. The Management nurtures a strong culture of integrity by ensuring there are accessible feedback channels for all employees and members of the public to the Audit Committee.

Concerns may be raised with information provided to:

Private & Confidential
 For the Attention of Audit Committee Chairman
 Singapore Cancer Society
 30 Hospital Boulevard #16-02/03
 Singapore 168583
 Email Address: audit_committee@singaporecancersociety.org.sg

All cases reported will be objectively investigated, and appropriate follow-up action will be taken accordingly. Depending on the nature of the concern raised or information provided, the investigation will be conducted, involving one or more of the following individuals or entities:

- The Audit Committee
- The External Auditor, and/or
- The Police or Commercial Affairs Department

When the investigation is completed, the investigating officer(s) will report the findings to the Audit Committee for its necessary action.

CONFLICT OF INTEREST POLICY

Members of the Council and employees are required in their respective capacities to act at all times in the best interest of the Society. All Council members and employees of SCS are required to read and understand its Conflict of Interest policy in place and make full disclosure of any interests, relationships, and holdings that could potentially result in a conflict of interest. All Council members are required to declare **an actual or perceived** conflict of interest to the Society at the start of the term **and annually thereafter**, or as soon as such conflict or the possibility of such conflict arises. All employees are required to declare **an actual or perceived** conflict of interest at the point of hire and annually **thereafter**. When a conflict of interest situation arises, the member/employee shall abstain from participating in the discussion, decision-making and voting on the matter.

RESERVES MANAGEMENT

SCS has a reserves policy of at least one time of its annual operating budget to meet its operational requirements. Operating reserves exclude all building/project funds, endowment, and sinking funds. The reserve ratio as of 31 December 2023 is 2.27. Reserves are invested in Singapore dollars fixed deposits and bonds with banks/financial institutions. Investments are reviewed and approved by the Council.

FUNDRAISING PRACTICES

SCS is committed to ensuring that our fundraising practices are ethical and conducted in the most honest and transparent manner at all times in line with the Fundraising Guidelines by the Commissioner of Charities. We promote a high level of accountability for the funds raised to be used for the specific programmes and services communicated to donors. Different communication platforms and channels are set up for donors to provide feedback to our Society. We also uphold the highest standards to protect donors' information and confidentiality through stringent processes and compliance with the Personal Data Protection Act of Singapore.

AUDIT AND LEGAL

Internal Auditor, BDO Advisory Pte Ltd, works closely with the Audit Committee and the Management to systematically assess the internal controls of the Society. Reviews are conducted regularly based on agreed upon scope. Processes are reviewed on rotational basis across the years. SCS statutory auditor is RSM SG Assurance LLP, and legal support is provided by RHTLaw Asia LLP.

DISCLOSURE AND TRANSPARENCY

The Council members adhere to regular evaluation of its performance and effectiveness and ensure compliance with requirements in the Code of Governance. The Society makes available to its stakeholders an annual report that includes information on its corporate governance, programmes, activities, services, audited financial statements, Council members and Management. The annual report is also published online via the Society's website. For the financial year, Council members did not receive any remuneration in their capacity as members of the Council. No employee is involved in setting their own remuneration, and no employee serve as Council members.

The remuneration of the three highest paid employees is disclosed in the bands of \$100,000 as follows.

Remuneration Bands	2023 Number of Executives	2022 Number of Executives
\$300,000 to \$399,999	1	1
\$200,000 to \$299,999	2	2
\$100,000 to \$199,999	0	0

Note: *The three highest paid employees do not serve in the Council*

PUBLIC IMAGE

The Society publishes information relating to its programmes, events and activities through various platforms that include its website, social media, newsletters, marketing brochures and other collaterals. A summary of the media coverage on the Society is incorporated into the monthly report that is submitted to the Management and Council.

ENTERPRISE RISK MANAGEMENT

As part of its risk management process, the Society reviews and updates the Management, Council and the risk register periodically. Process owners review their processes, assess the adequacy of controls and put in place mitigating controls where applicable. Key risks will be discussed in Management meetings as part of awareness and updates provided to the Council.

PERSONAL DATA PROTECTION ACT (PDPA)

The PDPA establishes a data protection law that comprises various rules governing the collection, use, disclosure and care of personal data. SCS recognises the rights of individuals to protect their personal data, including rights of access and correction. SCS has implemented policies and processes reviewed to ensure compliance and data integrity is not compromised. All employees are required to undergo PDPA training and additional security arrangements have been adopted to prevent unauthorised access, collection, use, disclosure, copying, modification or disposal of personal data.

REMUNERATION OF COUNCIL MEMBERS AND RELATED PARTY TRANSACTIONS

There is no claim by the Council members for services provided to the Society, either by reimbursing them or by providing them with an allowance or by direct payment to a third party. In accordance with the Code of Governance, the Council members, or people connected with them, do not have any transactions, relationships, or can significantly influence or is significantly influenced by another party. There is no paid staff, being a close member of the family belonging to the Executive Head or a governing board member of the charity, who has received remuneration exceeding \$50,000 during the financial year.

COUNCIL MEETING ATTENDANCE RECORD FOR THE PERIOD 1 APRIL 2023 TO 31 MARCH 2024

Meetings are held on a monthly basis to review the results and performance of the Society and its plans and programmes. To facilitate meaningful participation, all Council meetings are planned and scheduled well in advance, and materials are circulated to members of the Council at least one week prior to meeting dates.

Name	Attendance of Council
Mr Lee Meng Tat	11 out of 12 meetings
A/Prof Ravindran Kanesvaran	8 out of 12 meetings
Ms Koh Hui Hwa	8 out of 12 meetings
Mr Choo Swee Cher	9 out of 12 meetings
Mr Teh Seng Leong	8 out of 12 meetings
Mr Pek Tiong Boon	7 out of 12 meetings
Dr Choo Su Pin	8 out of 12 meetings
Ms Dilys Boey	10 out of 12 meetings
Dr Anna Yip	9 out of 12 meetings
Mr Kenny Rebeira	10 out of 12 meetings
Mr Wong Yu Han	12 out of 12 meetings
Mr Mak Hoe Kit	9 out of 11 meetings
Dr Samuel Ow	11 out of 11 meetings
Dr Eileen Poon	6 out of 11 meetings
Mr Ang I-Ming	5 out of 6 meetings

GOVERNANCE EVALUATION CHECKLIST

S/N	CODE GUIDELINE	CODE ID	RESPONSE
Board Governance			
1	Induction and orientation are provided to incoming governing board members upon joining the Board.	1.1.2	Complied
	Are there governing board members holding staff¹ appointments? (skip items 2 and 3 if “No”)		No
2	Staff does not chair the Board and does not comprise more than one third of the Board.	1.1.3	
3	There are written job descriptions for the staff’s executive functions and operational duties, which are distinct from the staff’s Board role.	1.1.5	
4	The Treasurer of the charity (or any person holding an equivalent position in the charity, e.g. Finance Committee Chairman or a governing board member responsible for overseeing the finances of the charity) can only serve a maximum of 4 consecutive years.	1.1.7	Complied
5	All governing board members must submit themselves for re-nomination and re-appointment , at least once every 3 years.	1.1.8	Complied
6	The Board conducts self evaluation to assess its performance and effectiveness once during its term or every 3 years, whichever is shorter.	1.1.12	Complied
	Is there any governing board member who has served for more than 10 consecutive years? (skip item 7 if “No”)		No
7	The charity discloses in its annual report the reasons for retaining the governing board member who has served for more than 10 consecutive years.	1.1.13	
8	There are documented terms of reference for the Board and each of its committees.	1.2.1	Complied
Conflict of Interest			
9	There are documented procedures for governing board members and staff to declare actual or potential conflicts of interest to the Board at the earliest opportunity.	2.1	Complied
10	Governing board members do not vote or participate in decision making on matters where they have a conflict of interest.	2.4	Complied
Strategic Planning			
11	The Board periodically reviews and approves the strategic plan for the charity to ensure that the charity’s activities are in line with the charity’s objectives.	3.2.2	Complied
12	There is a documented plan to develop the capacity and capability of the charity and the Board monitors the progress of the plan.	3.2.4	Complied
Human Resource and Volunteer² Management			
13	The Board approves documented human resource policies for staff.	5.1	Complied
14	There is a documented Code of Conduct for governing board members, staff and volunteers (where applicable) which is approved by the Board.	5.3	Complied
15	There are processes for regular supervision, appraisal and professional development of staff.	5.5	Complied
	Are there volunteers serving in the charity? (skip item 16 if “No”)		Yes
16	There are volunteer management policies in place for volunteers.	5.7	Complied
Financial Management and Internal Controls			
17	There is a documented policy to seek the Board’s approval for any loans, donations, grants or financial assistance provided by the charity which are not part of the charity’s core charitable programmes.	6.1.1	Complied
18	The Board ensures that internal controls for financial matters in key areas are in place with documented procedures.	6.1.2	Complied

S/N	CODE GUIDELINE	CODE ID	RESPONSE
19	The Board ensures that reviews on the charity's internal controls, processes, key programmes and events are regularly conducted.	6.1.3	Complied
20	The Board ensures that there is a process to identify, and regularly monitor and review the charity's key risks .	6.1.4	Complied
21	The Board approves an annual budget for the charity's plans and regularly monitors the charity's expenditure.	6.2.1	Complied
	Does the charity invest its reserves (e.g. in fixed deposits)? (skip item 22 if "No")		Yes
22	The charity has a documented investment policy approved by the Board.	6.4.3	Complied
Fundraising Practices			
	Did the charity receive cash donations (solicited or unsolicited) during the financial year? (skip item 23 if "No")		Yes
23	All collections received (solicited or unsolicited) are properly accounted for and promptly deposited by the charity.	7.2.2	Complied
	Did the charity receive donations in kind during the financial year? (skip item 24 if "No")		Yes
24	All donations in kind received are properly recorded and accounted for by the charity.	7.2.3	Complied
Disclosure and Transparency			
25	The charity discloses in its annual report — (a) the number of Board meetings in the financial year; and (b) the attendance of every governing board member at those meetings.	8.2	Complied
	Are governing board members remunerated for their services to the Board? (skip items 26 and 27 if "No")		No
26	No governing board member is involved in setting his own remuneration.	2.2	
27	The charity discloses that no governing board member is remunerated.	8.3	
	Does the charity employ paid staff? (skip items 28, 29 and 30 if "No")		Yes
28	No staff is involved in setting his own remuneration.	2.2	Complied
29	The charity discloses in its annual report — (a) the total annual remuneration for each of its 3 highest paid staff who each has received remuneration (including remuneration received from the charity's subsidiaries) exceeding \$100,000 during the financial year; and (b) whether any of the 3 highest paid staff also serves as a governing board member of the charity. The information relating to the remuneration of the staff must be presented in bands of \$100,000.	8.4	Complied
30	The charity discloses that there is no paid staff, being a close member of the family ³ belonging to the Executive Head ⁴ or a governing board member of the charity, who has received remuneration exceeding \$50,000 during the financial year.	8.5	Complied
Public Image			
31	The charity has a documented communication policy on the release of information about the charity and its activities across all media platforms.	9.2	Complied

Notes:

1 Staff: Paid or unpaid individual who is involved in the day to day operations of the charity, e.g. an Executive Director or administrative personnel.

2 Volunteer: A person who willingly serves the charity without expectation of any remuneration.

3 Close member of the family: A family member belonging to the Executive Head or a governing board member of a charity —

(a) who may be expected to influence the Executive Head's or governing board member's (as the case may be) dealings with the charity; or

(b) who may be influenced by the Executive Head or governing board member (as the case may be) in the family member's dealings with the charity.

A close member of the family may include the following:

(a) the child or spouse of the Executive Head or governing board member;

(b) the stepchild of the Executive Head or governing board member;

(c) the dependant of the Executive Head or governing board member.

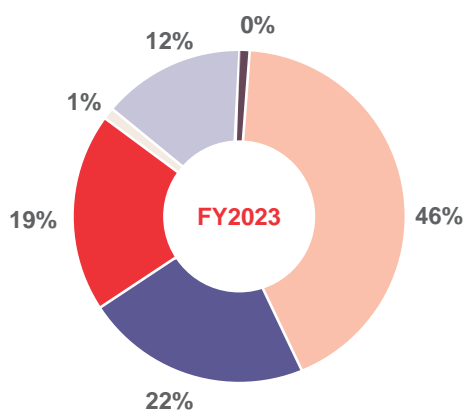
(d) the dependant of the Executive Head's or governing board member's spouse.

4 Executive Head: The most senior staff member in charge of the charity's staff.

FINANCIAL OVERVIEW

	FY2023 \$'000	%	FY2022 \$'000	%
For the financial year ended 31 December 2023				
Voluntary income	11,809	39%	11,587	45%
Funds generating activities	5,805	19%	4,930	19%
Charitable income	3,738	12%	3,210	13%
Grants income	5,698	19%	3,963	15%
Interest and investment income	3,303	11%	2,077	8%
Sundry income	12	0%	9	0%
Total Income	30,365	100%	25,776	100%
Cost of generating voluntary income	1,741	7%	1,529	6%
Cost of funds generating activities	2,747	11%	3,207	14%
Cost of charitable activities	19,413	78%	17,745	75%
Administrative costs	954	4%	784	3%
Other losses	121	0%	386	2%
Total Expenses	24,976	100%	23,651	100%
Surplus for the reporting year	5,389		2,125	
Other comprehensive income / (loss) ^^	2,249		(4,409)	
Total Comprehensive Income / (Loss)	7,638		(2,284)	

^^ Recognition of fair value changes on debt instrument.



	FY2023 \$'000	%
Components of Expenses		
Staff and related costs		
- Manpower cost in running programmes (\$8,672 / 35%)	11,431	46%
- Other staff cost (\$2,759 / 11%)		
Programme / Engagement related costs	5,535	22%
Financial / Medical Assistance	4,696	19%
Research	307	1%
Admin and General Cost	2,886	12%
Other losses	121	0%
Total Expenses	24,976	100%

ACKNOWLEDGEMENTS

CORPORATE SPONSORS & DONORS

\$200K and above

HSBC TRUSTEE (SINGAPORE) LIMITED
 RFUND PRIVATE TRUST COMPANY PTE LTD
 SINGAPORE TELECOMMUNICATIONS LIMITED
 TALKMED GROUP LIMITED
 TOTE BOARD (SINGAPORE TOTALISATOR BOARD)

\$100K to \$199,999

ASTRAZENECA SINGAPORE PTE LTD
 GILEAD SCIENCES HONG KONG LIMITED
 MSD PHARMA (SINGAPORE) PTE LTD
 POH TIONG CHOOON LOGISTICS LIMITED
 ROCHE SINGAPORE PTE LTD
 SINGAPORE CYCLING FEDERATION
 SINGAPORE POOLS (PRIVATE) LIMITED
 WE CARE FOUNDATION

\$25K to \$99,999

ADEBE SYSTEMS PTE. LTD
 ASIAN TOUR LIMITED
 BLOOMBERG SINGAPORE PTE. LTD.
 ILLUMINA SINGAPORE PTE. LTD.
 KEPPEL CARE FOUNDATION LIMITED
 MAPLEBEAR INTERNATIONAL SCHOOLHOUSE PTE. LTD. C/O CHONG WEN JIA
 NATIONAL COUNCIL OF SOCIAL SERVICE
 STEELMECH ENGINEERING SERVICES PTE LTD
 THE GREAT EASTERN LIFE ASSURANCE COMPANY LIMITED
 YMCA-YFC 2023 PROJECT LAVANDE

\$5K to \$24,999

ABBVIE
 ALLEN & GLEDHILL LLP
 AMGEN BIOTECHNOLOGY SINGAPORE
 AMGEN SINGAPORE MANUFACTURING PTE LTD
 ARTHESDAM JEWELLERY PTE LTD
 ASIA ENTERPRISES (PRIVATE) LIMITED
 ASTELAS PHARMA SINGAPORE PTE LTD
 AUSTRALIAN INTERNATIONAL SCHOOL PARENTS ASSOCIATION
 BAYER (SOUTH EAST ASIA) PTE LTD
 BKW RENT A CAR PTE LTD
 BRISTOL-MYERS SQUIBB (SINGAPORE) PTE LTD
 BUKIT BATOK 2ND CENTRE LUNAR 7TH MONTH ASSOCIATION
 C & W ELECTRONICS PTE LTD
 CANADIAN INTERNATIONAL SCHOOL PTE LTD
 CAPITAL INTERNATIONAL, INC.
 CELESTICA ELECTRONICS (S) PTE LTD
 CHARITIES AID FOUNDATION AMERICA
 CONCENTRATE MANUFACTURING SINGAPORE PTE LTD
 C-PAK PTE LTD
 CREDIT SUISSE AG (SINGAPORE BRANCH)
 CURIE HOLDINGS PTE LTD
 DASSAULT SYSTEMS SINGAPORE PTE. LTD.
 DEZIRE TECHNOLOGIES PTE LTD
 DIALINE DIAGNOSTIC SYSTEMS PTE. LTD.
 EISAI (SINGAPORE) PTE LTD
 ENOVA ELECTRICAL PTE LTD
 ENOVA TECHNOLOGIES PTE LTD
 FRESSENIUS KABI SINGAPORE PTE LTD
 GL ENGINEERING & CONSTRUCTION PTE. LTD
 GLOBAL ENERGY INTERNATIONAL LTD
 GOOGLE INC.
 HONG LEONG FOUNDATION
 HUMMINGBIRD BIOSCIENCE PTE LTD
 HUMPHREY OEI FOUNDATION LTD
 JABIL CIRCUIT (S) PTE LTD
 JAL HARDWARE & ENGINEERING PTE LTD
 JOHNSON & JOHNSON INTERNATIONAL (SINGAPORE) PTE LTD
 KONG MENG SAN PHOR KARK SEE MONASTERY
 KPI OCEANCONNECT GLOBAL ACCOUNTS PTE LTD
 KURIHARA KOGYO CO., LTD.
 KYOWA KIRIN ASIA PACIFIC PTE. LTD.
 LENDLEASE CORPORATION LIMITED
 LEW FOUNDATION
 LINK-8 SECURITY PTE. LTD.
 LION GLOBAL INVESTORS LIMITED
 MALAYSIAN ALLIED HEALTH SCIENCES
 MASTERCARD
 MDRT FOUNDATION
 MEDIDATA SOLUTIONS INTERNATIONAL ASIA PACIFIC PTE. LTD.
 MELLFORD PTE LTD
 MERCK PTE LTD
 MFS INTERNATIONAL SINGAPORE PTE. LTD.
 MICROSOFT
 NATIONAL HEALTHCARE GROUP DIAGNOSTICS
 NATIONAL UNIVERSITY HEALTH SYSTEM
 NICHEFIELD PTE. LTD.
 NORTHWESTERN NRG PTE. LTD.
 NOVARTIS (SINGAPORE) PTE LTD
 NTUC FAIRPRICE FOUNDATION
 OLAYAN CAPITAL PTE. LTD.
 PARKWAY HOSPITALS SINGAPORE PTE LTD
 PAVILION CAPITAL INTERNATIONAL PTE LTD
 PEI HWA FOUNDATION LIMITED
 PERSIMMON RIDGE INVESTMENT PTE LTD
 PICO ART INTERNATIONAL PTE. LTD.
 PULAU SAMBU SINGAPORE PTE LTD
 RED HAT ASIA PACIFIC PTE LTD
 RIO TINTO SINGAPORE HOLDINGS PTE LTD
 ROCHE DIAGNOSTICS ASIA PACIFIC PTE LTD
 RSM CHIO LIM LLP
 RUNNING LAB PTE LTD
 SALESFORCE.ORG DONATION MATCH
 SC CAPITAL PARTNERS PTE. LTD.

SCSK ASIA PACIFIC PTE. LTD.
 SHENTON CHARITABLE COMPANY LIMITED
 STRAITS RETAIL PROPERTY MANAGEMENT SERVICES PTE LTD
 SYNERGY FINANCIAL ADVISERS PTE. LTD
 THE FUTURE OF COOKING PTE. LTD.
 THE ILLUMINA FOUNDATION
 THEKCHEN CHOLING SINGAPORE LTD
 THERMO FISHER SCIENTIFIC PTE. LTD.
 TRANS-ORIENT SHIPPING PTE LTD
 TWENTYTWO HOLDINGS PTE LTD
 UOB LTD
 WING SHIP MARINE SERVICES PTE. LTD.
 YAHYA ABULHUSSAIN LUKMANJI SAIF CHARITY TRUST
 YAKULT SINGAPORE PRIVATE LIMITED
 YMCA-YFC 2023 - CARE FOR CANCER
 YMCA-YFC 2023 - PROJECT JUNTOS
 YOUNG MEN'S CHRISTIAN ASSOCIATION OF SINGAPORE

\$1K to \$4,999

A. LOE & ASSOCIATES PTE. LTD
 ACE SEMI CONDUCTOR SOLUTIONS PTE LTD
 ADVANCER GLOBAL LIMITED
 AGC MULTI MATERIAL SINGAPORE PTE LTD
 ALLSPORTS EQUIPMENT
 AMDOCS SINGAPORE PTE. LTD.
 APPLE ENT CENTRE PTE LTD
 APPLE INC.
 AUDITOR-GENERAL OFFICE
 AUSTRALIAN INTERNATIONAL SCHOOL PTE LTD
 AVNET ASIA PTE LTD
 BARCLAYS (MATCHING DONATIONS) VIA CHARITIES TRUST
 BEAVER CONTROMATIC PTE. LTD.
 BECTON DICKINSON MEDICAL (S) PTE LTD
 BHP BILLITON MATCHED GIVING PROGRAM C/O CYBERGRANTS
 BLKJ HAVAS PTE. LTD.
 BRIGHT FUNDS FOUNDATION
 BROTHER INTERNATIONAL SINGAPORE PTE LTD
 CELANESE FOUNDATION
 CELEANESE SINGAPORE PTE LTD
 CHEK SIAM TNG
 CHUGAI PHARMABODY RESEARCH PTE. LTD.
 CLIFFORD CHANCE PTE. LTD.
 CPP GLOBAL PRODUCTS PTE LTD
 CREDIT AGRICOLE CORPORATE & INVESTMENT BANK
 CSD SEALING SYSTEM PTE LTD
 D'AMICO SHIPPING SINGAPORE PTE LTD
 DENTSU SOLUTIONS PTE LTD
 DETPAK HOLDINGS PTE LTD
 ENT SPECIALISTS GROUP PTE. LTD.
 ENTRE AUTOMATICS PTE. LTD
 ESSENCEMEDIACOM SINGAPORE
 EXCLUSIVE GLOBAL PTE LTD
 GLOBAL FITNESS PTE. LTD.
 GLOBAL HYDRAULICS PTE. LTD
 GT SAN ENGINEERING PTE LTD
 GUAN HO CONSTRUCTION CO PTE LTD
 HAI SOON DIESEL & TRADING PTE LTD
 HAPPY SEEDS GARDEN C/O TAN SOOH JIUNN
 HCH CLEANING SERVICES PTE. LTD.
 HEALTHCARE ASIA PTE LTD
 HEC ELECTRICAL & CONSTRUCTION PTE LTD
 HILDA LOE ASSOCIATES PTE LTD
 HOZ PTE LTD
 IDS MEDICAL SYSTEMS (SINGAPORE) PTE LTD
 IFAST FINANCIAL PTE. LTD.
 INTERLOCAL EXIM PTE LTD
 INTERNATIONAL CANCER SPECIALISTS PTE. LTD.
 INTL DATA CORP ASIA PACIFIC PTE LTD
 IPACS CHINA PTE LTD
 IPSEN PHARMA SINGAPORE PTE LTD
 J-QUEST TECHNOLOGY (ASIA) PTE. LTD.
 KASHIN SHIPPING PTE LTD
 KEMBANGAN-CHAI CHEE COMMUNITY SPORTS CLUB
 KEN PRO SHOP
 KOONG YEE RENOVATION WORKS PTE. LTD.
 KREWFIT PTE LTD
 KUANG CHEE TNG BUDDHIST ASSOCIATION
 KYOHO MARKETING PTE LTD
 LINKEDIN CORPORATION
 LITTLE SAGE INTERNATIONAL PRESCHOOL PTE. LTD.
 LITTLE WONDERS MONTESSORI CHILDREAR @ REMAJA PTE. LTD.
 MACQUARIE
 MEDINEX HEALTHCARE PTE LTD
 MICRON TECHNOLOGY INC.
 MS COMMERCIAL PTE LTD
 MSIG INSURANCE (SINGAPORE) PTE LTD
 NANYANG GIRLS' HIGH SCHOOL
 NANYANG TECHNOLOGICAL UNIVERSITY NETFLIX
 NEURONES IT ASIA PTE LTD
 NIGHTSERVICINGSG PTE. LTD.
 NOKIA SOLUTIONS AND NETWORKS SINGAPORE PTE. LTD.
 NOMURA SINGAPORE LIMITED
 NORTHMA BUILDING MAINTENANCE SERVICE PTE LTD
 NOVEL COMMUNICATION PTE LTD
 NOVENA CANCER CENTRE PTE. LTD.
 ORCHARD TURN DEVELOPMENTS PTE. LTD.
 OUTSOURCE ASIA INDUSTRIES (2008) PTE LTD
 PARKWAY CANCER CENTRE
 PENGUIN INTERNATIONAL LIMITED
 PETROLUBES ASIA PTE LTD
 PRACTICAL ANALYZER SOLUTIONS PTE. LTD.
 PROWLER INTERNATIONAL PTE LTD
 QUALTRICS SINGAPORE
 RACING WORLD (S) PTE LTD
 RAINBOWLAND LEARNING CENTRE PTE. LTD.

REALTY & INVESTMENT HOLDINGS PTE LTD
 RED HAT, INC.
 REFINE CONSTRUCTION PTE LTD
 SANTI LUCIA ASSET MANAGEMENT PTE. LTD.
 SANZ PTE LTD
 SARTORIUS STEDIM SINGAPORE PTE LTD
 SENG HOE HARDWARE & ENGINEERING PTE LTD
 SHANGHAI HOTEL LIMITED
 SHELL SINGAPORE PTE LTD
 SHOPEE SINGAPORE PRIVATE LIMITED
 SIA ENGINEERING COMPANY LTD
 SINGAPORE BREAST SURGERY CENTER PTE LTD
 SUGARED ASIA PTE. LTD.
 SUTD CARE OF BEACON CONSULTING PTE LTD
 TAMPINES CHINESE TEMPLE
 TAT SENG PACKAGING GROUP LTD
 TEEKAY MARINE (SINGAPORE) PTE. LTD.
 TEMASEK TOUCH / GRACE HOUSE THE COMMUNITY FOUNDATION OF SINGAPORE
 THE GOLDMAN SACHS GROUP, INC. AND SUBSIDIARIES
 THE Ngee ANN KONGSI
 THONG TEOK SIAN TONG LIAN SIN SIA TOYER RESEARCH CAPITAL (SINGAPORE) PTE. LTD.
 TUAS PEK KONG KENG MANAGEMENT COUNCIL
 TWITTER
 VERTIV SINGAPORE PTE LTD
 VISA INC.
 WACKER CHEMICALS (SOUTH ASIA) PTE. LTD.
 WEERONG WATERPROOFING AND SERVICE PTE LTD
 WELLCITY (1998) PTE. LTD.
 WELLINGTON MANAGEMENT SINGAPORE PTE LTD
 WESTPAC BANKING CORPORATION
 WOODLANDSHEALTH PTE LTD
 YMCA-YFC 2023 - PROJECT BELLATOR
 YMCA-YFC 2023 - PROJECT LIBERUM
 YMCA-YFC 2023 - THE HEARTBEAT INITIATIVE
 Z ZURICH FOUNDATION
 ZUPERMANN AUTOSPARES PTE LTD

\$999 and below

A C AUTO ENGINEERING WORK
 A*STAR INFECTIOUS DISEASES LABS
 A99 RESOURCES
 ACHIEVER BOOKKEEPING & CONSULTANCY PTE. LTD.
 ADOBE SYSTEMS, INC.
 ADVANCED MICRO DEVICES, INC.
 AEI LEGAL LLC
 AEROSTRATEGIES INC
 AFFORDABLE ART FAIRS PTE. LTD.
 AGILENT TECHNOLOGIES, INC.
 ALFA TRADELINKS PTE. LTD.
 ALFASHP AGENCIES (SINGAPORE) PTE. LTD.
 ALIF-ENGINEERING PTE LTD
 AMCORP GLOBAL LIMITED
 ANG CHIN MOON FUNERAL DIRECTORS PTE. LTD.
 APPLIED MATERIALS FOUNDATION
 AREGIUS MARITIME PTE. LTD.
 ART BY JAYS
 ASIA INFRASTRUCTURE SOLUTIONS SINGAPORE PTE. LTD.
 ASTUITONE PTE. LTD.
 ASTUTE TAX PTE LTD
 AVITRON PTE LTD
 AXXESSIBO PTE LTD
 BEACON MEDICAL PTE. LTD.
 BESTAR SERVICES PTE. LTD.
 BIOMEDIX SINGAPORE PTE LTD
 BOOKING.COM
 BOON HUAT INTERIOR DESIGN PTE LTD
 BUDHRANI REALTY (PTE) LIMITED
 BY TRADANCE LTD
 C & S SURICAP PTE. LTD.
 CARE ASSEMBLY OF GOD
 CASTERLY PRIVATE LIMITED
 CATERCONNECT PRIVATE LIMITED
 CERIDIAN
 CH & R MANAGEMENT SERVICES
 CHEAT DAY PTE. LTD.
 CHEF WORKS PTE. LTD.
 CHENIERE MARKETING PTE. LTD.
 CHOO CY MEDICAL PTE. LTD.
 CISCO SYSTEMS, INC.
 CITYSPROUTS PTE LTD
 CLASSIC LEBEN
 CLOVER 33 PTE LTD
 COBELFRET PTE. LTD.
 COMPARI.FY
 CONNECTING FRAGMENTS PTE. LTD.
 D.C. ENGINEERING AND TRADING
 DANA CITTA BUDDHIST SOCIETY
 DANIELLE VAN DE VELDE PTE LTD
 DEPOSITORY TRUST & CLEARING CORPORATION (DTCC)
 DHL EXPRESS SINGAPORE
 EDWINSON SINGAPORE PTE. LTD.
 EDSA CONSULTANCY PTE LTD
 ELLIE SHOES CO
 ELASTICSEARCH
 ELITE EDUCLOUD PTE. LTD
 EQUINIX, INC.
 ESTEEM MANAGEMENT SERVICES PTE. LTD.
 EUNOIA JUNIOR COLLEGE
 F5 NETWORKS
 FAR EAST FLORA.COM PTE LTD
 FERRING PHARMACEUTICALS PTE LTD
 FIDDSOLIKE
 FIRE-MECH ENGINEERING PTE. LTD
 FITNESS INNOVATIONS (SINGAPORE) PTE LTD
 FLINDERS SHIPBROKERS
 FLO-LINE HYDRAULICS PTE LTD
 FOCUS EMPLOYMENT AGENCY LLP
 FOCUS SHERIDAN MAINTENANCE & ENGRG PTE LTD
 FOSTER AV (S) PTE. LTD.

FOUNDATION ASSOCIATES ENGINEERING PTE LTD
 FRANKLIN TEMPLETON
 FRONT & CENTER PTE LTD
 FV VENTURES PTE. LTD.
 FWD SINGAPORE PTE. LTD.
 G3 CREATIV LLP
 GIVINGFORCE FOUNDATION
 GLOBALFOUNDRIES
 GOODTECH PTE. LTD.
 GRAINE PTE LTD
 GTRSG PTE LTD
 HEWLETT PACKARD ENTERPRISE FOUNDATION
 HMK PROJECT CONSULTING PTY LTD
 HOMEMEDI SOLUTIONS PTE. LTD.
 HPI
 HY FLO PTE LTD
 ICON SOC PTE. LTD.
 IES TOOLING
 INFANTRIE PTE. LTD.
 INGENICO INTERNATIONAL (SINGAPORE) PTE LTD
 INKBOW PTE. LTD.
 INNOVERN SOLUTIONS PTE. LTD.
 INSTITUTE OF MOLECULAR AND CELL BIOLOGY
 INTES ISLAND MANPOWER PTE. LTD.
 IQSS SERVICES PTE. LTD.
 IRAWAY INVESTMENT PTE. LTD.
 IVEGAN PTE. LTD.
 JEPPESEN SINGAPORE
 JPMORGAN ASSET MANAGEMENT (SINGAPORE) LIMITED
 JYNK INK
 KAIKI CO PTE LTD
 KC GLOBAL CONSULTING PTE. LTD.
 KEC RECOVERY
 KILLJO ART PTE. LTD.
 KION ENGINEERING PTE LTD
 KLA CORPORATION
 KOH CIVIL ENGINEERING PTE. LTD.
 KSB SINGAPORE (ASIA PACIFIC) PTE LTD
 LAND TRANSPORT AUTHORITY OF SINGAPORE
 LASALLE COLLEGE OF ARTS LIMITED
 LEO SHIPPING AGENCIES PTE. LTD.
 LINK-WEST PTE LTD
 LIION TCR PTE LTD
 LITTLE SAGE INTERNATIONAL
 PRESCHOOL @ UBI PTE. LTD.
 LOBRAND AUSTRALIA
 LOVEBIRD COLA SALON
 LPH CATERING
 LSEG PUB QUIZ
 LTM INSPIRES & CONSULTING PTE. LTD.
 LUXCONEX PTE. LTD.
 MAC-QUIP ENGINEERING AND SUPPLIES PTE. LTD.
 MACS MARITIME CARRIER SHIPPING LLC
 MAPLE BEAR LEARNING PLACE PTE. LTD.
 MAR THOMA SYRIAN CHURCH IN SINGAPORE
 MARINE CARE SINGAPORE PTE. LTD.
 MARSH & MCLENNAN COMPANIES
 MARTHOMA SYRIAN CHURCH IN SINGAPORE
 MARIUBENI EQUIPMENT FINANCE (OCEANIA) PTY LTD C/O DREW & NAPIER LLC
 MARVELL
 MCF AUTO PTE LTD.
 MCKINSEY
 MEDTRONIC
 MEGANET PTE. LTD.
 MENG FIBREGLASS CONTRACTORS
 METRICA PARTNERS PTE. LTD.
 METRO (PRIVATE) LIMITED
 MFS GIVES
 MING XIAN INTERIORS DESIGN & RENOVATION PVT LMT C/O MR YAP MING
 MOODY'S CORPORATION
 MORRISON MANAGEMENT PTE LTD
 MTKL ENGINEERING PTE. LTD.
 MUSUMECI SRL
 MY GOZY ROOM LLP
 NATIONAL CANCER CENTRE OF SINGAPORE PTE LTD
 NATIONAL UNIVERSITY OF SINGAPORE
 NCS PTE. LTD
 NEWS CORP
 NINE AND EIGHT PTE LTD
 NINETY-7 CONCEPT PTE. LTD.
 NOON WEWEAR
 NSJ WELLNESS PTE. LTD.
 NTU CARE OF BEACON CONSULTING PTE LTD
 NTU CARE OF BEACON CONSULTING PTE LTD
 NUTANIX, INC.
 ODETTE BUSINESS SERVICES PTE. LTD.
 OFFEE ART STUDIO
 ORACLE
 OVERSEAS UNITED (SINGAPORE) PTE LTD
 PACIFIC LIFE FOUNDATION
 PAYPAL
 PEI LIN
 PENTA LIGHTING PTE LTD
 PFIZER ASIA MANUFACTURING PTE. LTD.
 PHOTO-ART ASSOCIATION OF SINGAPORE
 PIXEL AUTOMATION PTE. LTD.
 PRESTIGE BIOPHARMA LIMITED
 PROMARINE YACHT SALES PTE. LTD.
 PROVIDENCE MANAGEMENT PTE. LTD.
 QBE INSURANCE GROUP LIMITED
 RYLA MEDIA LIMITED
 S&P GLOBAL
 SANTERIA TRADING
 SCA 2021 PTE. LTD.
 SCHOOL OF SCIENCE AND TECHNOLOGY, SINGAPORE
 SERVICE NOW
 SHRINE ENTERPRISE PTE LTD
 SINGAPORE IMMUNOLOGY NETWORK
 SINMECH
 SOS RESTAURANTS PTE. LTD.
 STUDIO P PTE. LTD. (WELLSMOOCHT)

SUITE SOUND PTE LTD
 SUNRAYSA COMPANY PTE. LTD.
 SURGICAL ASSOCIATES PTE LTD
 SUTAJIJO IWA PTE. LTD.
 SWISS QUALITY EVENTS
 TAIS KITCHEN PTE LTD
 TAJ INDIAN FOODS PTY LTD
 TECHIES LOGISTICS (S) PTE LTD
 TECHNIQ TRAINING PTE. LTD.
 TELEMARKEETING ASIA (SINGAPORE)
 PTE LTD
 TEMPLECANDLES SG PTE. LTD.
 TERUMO BCT ASIA PTE. LTD.
 THE ANIMAL RETREAT PTE. LTD.
 THE CENTRAL CONSTRUCTION CO.
 (PTE) LTD
 THE FISHWINGS PTE. LTD.
 THE MIND STUDIO PTE LTD
 THE TRAVEL CORPORATION (2011) PTE LTD
 THERMO FISHER
 THIS HUMID HOUSE PTE. LTD.
 THOMSON MEDICAL PTE LTD
 TMF SINGAPORE H PTE. LTD.
 TOPPAN SECURITY PRINTING PTE LTD
 TOTAL ESTATE MANAGEMENT SERVICE
 PTE LTD
 TOURISM SOLUTIONS INTERNATIONAL
 PTE LTD
 TRAINING EDGE INTERNATIONAL PTE LTD
 TRIPADVISOR
 TRIPLE SHOT ENTERPRISES
 TRUCARE MEDICAL (AMK) PTE. LTD.
 TTG WINES PTE. LTD.
 UNCOMMON COURTESY PTE. LTD.
 UROHEALTH PTE. LTD.
 V3 SNACKS
 VANMEDIA GROUP PTE LTD
 VELTAR TRADING PTE. LTD.
 VICTORY CONSULTING & SERVICES PTE. LTD.
 WILLIAM BLAIR
 WITCO ENVIROTECH PTE LTD
 WILYNX PTE. LTD.
 WOMEN PARKOUR SINGAPORE –
 WOMEN'S PARKOUR JAM
 WORKDAY INC.
 WORKINTERIOR PTE LTD
 WORKIVA, INC.
 XCL.ACADEMY ACADEMY PIONEER TOWN
 XIU XIN TARNG
 X-TEAM LOGISTICS PTE. LTD.
 YMCA-YFC 2023 – PROJECT ASTER
 YMCA-YFC 2023 – PROJECT OMA
 YMCA-YFC 2023 – TEAM 4U (HEALING
 HEARTS)
 YOTEL SINGAPORE ORCHARD ROAD
 YUFU HOUSEHOLD & ELECTRICAL
 ZENITH REAL ESTATE SERVICES PTE. LTD.

INDIVIDUAL DONORS

\$25K and above
 SURESH NAIR

\$5K to \$24,999

CHEN DIANYU
 CHEN GABRIEL
 CHIA PEI JET
 CHIA XIN YU
 CHONG JI LIANG
 CHOW JOO MING
 CHUA SIEW LING KAREN
 HUNG CHI KWAN
 KAPUR SURABHI AGARWAL
 KOH BOON LAI
 LEE CHOR JOO
 LELY GRACE
 LIM BOON CHEONG
 LOW HWEE CHUA
 LU KEE HONG
 NG HUI LING
 NGIEN HOON PING
 OW BOON THIAM WILLIAM
 SIA SIEW KIANG
 SWARAJPAL SINGH
 TAI YANG
 TAN AH MOI
 TAN HUI SZE ALICE
 TAN KIANG HENG
 TAN SONG MOH
 TANG CHUN KIAT DAVID
 TAY PENG HUI
 TEH SENG LEONG
 THE FAMILY OF MDM CHANG JUI ING
 THE LATE MR HENG TENG BENG C/O DR
 DONALD POON
 THE LATE MRS NANCY HAWKES C/O NOEL
 HAWKES
 THE LATE PONG KWEE FONG C/O LEE
 KOE KEONG
 VIBHOR MITTAL
 WONG LEE FOON
 WONG YIN YOKE
 YEO KING WAT
 ZHANG SI EN

\$1K to \$4,999

ALBERT CHING
 ABRAHAM RAHUL
 ABUEL IAN KARLO MARASIGAN
 ACHAR VISHAL CHANDRA
 ADNAN HUZEPHA BAMBOAT
 ADUMAI SHABIRKHAH
 AHN HAE RIM
 ALI SUSANTO LIE
 ALUKKA PETER FRANCIS
 AMIT CHAUBEY
 ANILESH UNNIKRISHNAN
 ASUKA KONDO
 AU YONG KAREN
 BALAKUMAR PALANIAPEN
 BALWANI ASHWANI KUMAR
 BALWANI KANCHAN
 BAO JIANDA
 BATUHAN OKUR
 BELLAMKONDA SRINIVASA
 CHAKRAVARTHY
 CATHERINE ELIZABETH
 CHAN CHEE CHEONG
 CHAN CHEE HOCK KITSON
 CHAN PEI FONG CLARA
 CHAN WING SZE
 CHAN LAI LAI
 CHAY ZHU EN
 CHAY ZHU EN
 CHEN ELLOUISA
 CHEN MINGJIE
 CHEONG HAI POH
 CHEW GUO QUAN
 CHEW LEE QUAN ALVIN
 CHIA FENG QUAN WILSON
 CHIANG WAI LING

CHINNIAM MANOHARA
 CHNG JOE HUI JAMES
 CHONG CHIN KOK MARK
 CHONG KIT YAN STEPHANIE
 CHRISTOPHER
 CHUA BEE BEE
 CHUA LIN KIAT
 CHUE ZHENG YUAN
 CLAUDIA ANNE BARSTON
 DELTEIL BRUCE
 DICKSON GRAHAM
 DUAN LIAN
 EDWIN TAN KOK CHEONG
 ERSKINE SAW
 EZHIL ANAND BABU CHANDAR
 FAN YUAN WEI JOHN
 FAYADH RAHMAT
 FAZAL ASHFAQ
 FLINTER ADAM
 FOO JING QUAN
 FOO KAN KOK
 FOONG LAI CHOO
 GATCHALIAN MARY GRACE TUAZON
 GEOK SEE CHAI
 GLOVER TIMOTHY JOHN
 GOH LAY LEE
 GOH SU PHENG
 GOO WEE KEONG
 GLEDON VANINICK MICHEL
 GUIDO FABBRI
 GUO SHAO KUN
 GUO XUDI
 GWEE PHEK ENG
 HAND STEVEN JAMES
 HARIHARAN SURESH
 HENG FU SHIN GAVIN
 HENRY DOMINIQUE PIERRE
 HO TING WAI CHRISTINE
 HOLGER KUNZE
 HONG FEIFEI
 HONG HENG BOON JOHN
 HONG YI HUI AMANDA
 HOU CHEE YONG
 HU AIBIN
 HU RENWEI TERENCE
 HU ZHIYUAN
 HUANG ZONGREN
 HUI MUN YU FABIAN
 INDRA ALEK
 JAYAPALAN KUPPADAKATH VADAKKEDATH
 JAYARAMAN KARUPPAIAH
 JHIVANESH JOTHENATHAN
 JHUNE KEITHRICK MAGSOMBOL
 VILLANUEVA
 JI XIAOFENG
 JOBANPUTRA NITESH KUMAR
 JOSYULA NAGA SATYANAND
 JOTHENATHAN JIVANESH
 KARTHIK DHEEPAN DHEENATHAYALAVEL
 KARVE AMEYA ANIL
 KATHERINE USAPDIN
 KAUSHIK MANOJ CHAKRABORTY
 KELLY LIN
 KENG TZE WEI
 KIM SUNYEE
 KING PEREZ INNA
 KOH BOON LAI
 KOH LONG KUANG ERIC
 KOH PUAY GHEE
 KOH TZE CHIAT
 KOH WAN JING
 KUAH HSIAH YANG
 KUDALE YOGESH ARVIND
 KUTTI SALIM
 KWAN DA CHEN PETER
 KWAN TIEN CHEE FERRIS
 LAI CHIEN QI
 LAI CHING YEE
 LAI KWOK ON ANTHONY
 LAI LIP CHEE
 LAM KAM YEE
 LAM SUNG
 LANG TAO YIH ARTHUR
 LATE MR CHAN KIT LOONG C/O MR LIAM
 KOK KHENG
 LAU YU KIANG
 LAW LAI HING
 LEE BRUCE RYAN
 LEE DENG YING
 LEE MEI KAY
 LEE MING LI
 LEE MING TONG
 LEE WEN SI
 LEE YUN FOOK
 LEK HAN WEI LEK
 LEO LI CHAN
 LEONG CHEE HONG
 LEONG JIAYUN
 LEONG WUAN YING
 LEVINA SARI
 LI JINSONG
 LI XUXU
 LIAM KOK KHENG
 LIAU POH GEK
 LIAU WAI MIN
 LIEM FELICIANA
 LIEM FELITA
 LIEW HAU MING
 LIM AI LENG
 LIM BOON CHOON
 LIM CHIN THIAM
 LIM GUANG YONG
 LIM HONG YAO DESMOND
 LIM LI LIEN
 LIM LIANG HUAN
 LIM SER KAI
 LIM SOK ENG
 LIM THIAM HUAT
 LIM WEI KUANG AMOS
 LIN HANJIE
 LIN JUN XUAN JEREMY
 LIN MING XI LUCAS
 LIN SHAOHUA LYDIA
 LIONEL KING
 LO KIT LING LANDA
 LOO HOCK LEONG
 LOW SAU CHAN
 LU HAIQIANG
 LUKE THOMAS PLASTER
 LU JINGXUAN
 MANI VARUN IYER
 MANOHARAN KRISHNAN
 MAYANK GUPTA
 MICHAEL NEULING
 MITTAL VIBHOR
 MUHAMMAD USMAN WAHID
 MUK KOON YET WILLIAM
 MUTHUKUMAR BALASUBRAMANIAM
 NAGARAJAN SENTHIL KUMAR
 NAMITA BADRINATH MURTHY
 NEIL LAURENCE COOMBER
 NEO SHUN JIE
 NEO YI YING
 NERAMIT LEEWAIROJE

NG BOON KIAT
 NG CHAI BAH
 NG HWEEFEN
 NG KAH WAN
 NG KIAN SIONG
 NG KOK CHEA LEMAN
 NG KOK TEE
 NG SENG HUNG GARY
 NG SIEW LI REBECCA
 NG TIAN SHENG
 NG TIAN SHENG
 NG WEIZHONG
 NG YONG REN
 NGO QUANG MINH
 NISHAD MANNAMBETH KARIKKAN
 NOMDO SAKI KRUIS
 NUPUR JOSHI
 O CONNOR-AOKI OWEN
 ONG ALAN
 ONG ALOYSIUS
 ONG CHARLES DANIEL SEE
 ONG KWEE CHOON
 ONG PEI LENG PERLIN
 ONG SHI CHING STEPH
 ONG SHING YAU
 OON SU SUN
 PADURA MARIBETH LAT
 PANDIKRISHNAN GURUSAMY
 PANG SOON SENG
 PANG YU FENG DAVE
 PARK SUKHOON
 PATRICK DAISLEY
 PEH CHENG HOON
 PHUA CHING SHYEN
 PHUA KWANG PENG
 PORAKATTIL SIDDHARTH PEETHAMBAR
 PORWAL ANURAG
 PRASHANT PRADHAN
 PYUN KYUNG HWA
 RAJAGOPALAN MALAVIKA
 RAJMOHAN, SATISH
 RANA SANJAY
 RAVILAL GUNARATNE
 RG SUKANYA
 ROLDAN KATHRINA PRECIOSA BARRO
 ROSLAN BIN MAAROF
 RUI XIANG HENG
 RYAN PHILIP CARTER
 RYDBERG CHRISTER BERTIL
 S. SELVARANI
 SANIGARAPU ASHOK
 SANJAY KAMALKISHORE PANDIT
 SANJAY ROY
 SARAH GALLANO FRAYNA
 SAVIO VINOD
 SENG SHEENA
 SENTHIL SHANMUGAM
 SEOW CHOO HAN
 SHASWAT KUMAR
 SHIRISH APTE
 SIEW JOZHI
 SIM CHOON WAH
 SIM HYUN CHUL
 SIN CHOW MEI
 SINGH SHIKHA SATENDRA
 SIO ION KUAN
 SIVASAMY RAJESH KUMAR
 SNG YOW CHONG
 SONG PENG
 SOON YEO PENG
 SOURABH PAREEK
 SRI HARISH KOMMAVARAPU
 SRIVASTAVA SHAILENDRA
 STUART J DEVINE
 SUJITH INDEEWARA WIJERATHNE
 SUTCLIFFE ROBERT IAIN
 TAYAYA KATO
 TAN ALCINA
 TAN CHEE WEI
 TAN CHENG SOO EDDIE
 TAN CHERRIE
 TAN HOCK KEE MICHAEL
 TAN JUN KANG MARK
 TAN KIAN HOON
 TAN KIM BIAU
 TAN KOK LIANG
 TAN MIU GEK
 TAN SI HUI
 TAN TECK LING
 TAN TZE WEI JERRY
 TAN WHUA POH
 TAN YEE SUAN
 TAN YU JIE JEREMY
 TAYLAN AYSIE CEREN
 TEH KOK PENG
 TEO GUI XIONG
 TEO KEE MENG
 TEO ZHILUN
 TEONG WONG CHIN
 THAM JACQUELINE
 THE LATE MDM LEE SOON LIAN C/O LEE
 MAY LING JOANNE
 THE LATE MR SEAH POH SENG C/O SEAH
 WAN PENG GILDA
 THE LATE RAMASAMY NAICKER C/O
 KRISHNASAMY NAICKER S/O KEERTI
 TJONG FIE MIE
 TNG SIEW HUA
 TONG NAI GANG
 TRISTAN LO
 TRIVEDI SANJAY
 TYERELL JAMES ALLEN
 UMESH DIVAKAR
 VEERAIYAN KALAISELVA
 VENKATA NARAYANAN PAKU
 RADHAKRISHNAN
 VIJAY IYER
 VIMAL NARAYANAN
 VIMAREESAN KALAISELVAN
 VIPUL KANSAL
 VOLKER SIEGFRIED APPEL
 WAN ENG LOON
 WAN YUE YING SARAH
 WANG DAVID
 WANG XIANG YANG
 WEE SHOO PENG
 WEY KIM LONG
 WILSON CHRISTOPHER PETER
 WONG CHONG YEE KENNY
 WONG LAI KUAN
 WONG LEE FOON
 WONG LEE YIN
 WONG PENG SIN VINCENT
 WONG SIN CHUAN EDWARD
 WONG SUNG LAI
 WONG ZHI HAO
 WU YUAN
 XIN TONG JIAN
 YAHYA KARAHASAN
 YANG YU FOOK RAYMOND
 YANG YU FOOK RAYMOND
 YAP LIN JAG
 YE ZHAN HUA JOEL
 YEE CHEE CHWEN

YEO ALBERT
 YEO CHIN HWEE
 YEO SOK HOONG
 YEONG WENG LOK VINCENT
 YONG FOOK SENG
 YONG LAY EY LINDA
 YORDAN DICKY
 YOU HUI JOO
 YU WENBO
 YUEN CHEE WAI RICHMOND VICTOR
 ZAW MOE MYINT
 ZHANG MINGLIANG
 ZHANG YANG
 ZHOU TIANSHI

IN-KIND DONATION

ABR HOLDINGS LIMITED
 APEX PHARMA MARKETING PTE LTD
 CHOP KHIM TEAH
 EMJAY ENTERPRISES PTE LTD
 ENGINEERING GOOD LTD
 F&N FOODS PTE LTD
 FONDS N BAKES
 GOLD KIL TRADING ENTERPRISE
 (SINGAPORE) PTE LTD
 GUARDANT HEALTH PTE LTD
 HEALTHY GRAZING SDN BHD
 JEN SINGAPORE ORCHARDGATEWAY BY
 SHANGRI-LA
 JEN SINGAPORE TANGLIN BY SHANGRI-LA
 JULIE'S MANUFACTURING SDN BHD
 KLEEN-PAK PRODUCTS PTE. LTD.
 KUMPULAN DEVELOPMENT (S) PTE LTD
 LUEN FOO MEDICINE CO PTE LTD
 MANNA 360 PTE. LTD.
 MATRIX STAR MARKETING PTE. LTD.
 MAYBANK
 NAOS SINGAPORE PTE LTD
 PINK APPLE PTE. LTD.
 POLAR ELECTRO SINGAPORE PTE. LTD.
 SENG HUA HNG FOODSTUFF PTE LTD
 SENTOSA BEACH RESORT PTE LTD
 SHANGRI-LA HOTEL LIMITED
 SINGAPORE TELECOMMUNICATIONS
 LIMITED
 SO DRAMA ENTERTAINMENT
 SPORT SINGAPORE
 TAIHO PHARMA ASIA PACIFIC PTE LTD
 TAIHSO PHARMACEUTICAL SINGAPORE
 PTE LTD
 TAKEDA PHARMACEUTICALS (ASIA
 PACIFIC) PTE. LTD. F.K.A NYCOMED
 HOLDINGS ()
 TRUE FITNESS PTE. LTD.
 TRUE YOGA PTE. LTD.
 UBS AG
 UNIVERSAL INTEGRATED CORPORATION
 CONSUMER PRODUCTS PTE. LTD.
 VATOSSG PTE. LTD.
 VOCCO ORCHARD SINGAPORE
 YAKULT SINGAPORE PRIVATE LIMITED

CH PARTNERS & SUPPORTERS

AIN SOCIETY
 ASIAN ALLIANCE RADIATION & ONCOLOGY
 CATWALK ASIA HOLDINGS PTE LTD
 CHANG GENERAL HOSPITAL
 COLORECTAL PRACTICE
 CURIE ONCOLOGY
 DR BERNARD LIM SPECIALIST SURGERY
 EY YAN SANG
 FARRER PARK HOSPITAL
 FLY ENTERTAINMENT
 GIRL GUIDES SINGAPORE
 HEALTH PROMOTION BOARD
 ICON CANCER CENTRE
 IHH HEALTHCARE
 INTERNATIONAL CANCER SPECIALISTS
 KILLO ART
 KK WOMEN'S AND CHILDREN HOSPITAL
 METRO (PRIVATE) LIMITED
 MEDIACORP PTE. LTD
 MELISSA TEO SURGERY & THE SURGICAL
 ONCOLOGY CLINIC
 MOUNT ELIZABETH HOSPITAL
 NATIONAL CANCER CENTRE SINGAPORE
 NATIONAL UNIVERSITY CANCER
 INSTITUTE , SINGAPORE
 NHG DIAGNOSTICS
 NORTH EAST CDC
 NORTH WEST CDC
 NOVENA CANCER CENTRE
 PANASIA SURGERY PTE LTD
 PARKWAY CANCER CENTRE
 PEOPLE'S ASSOCIATION
 PEOPLE'S ASSOCIATION
 RED CROSS YOUTH
 SAW SWEE HOCK SCHOOL OF PUBLIC
 HEALTH
 SCREEN FOR LIFE
 SENGKANG GENERAL HOSPITAL
 SINGAPORE GENERAL HOSPITAL
 SINGAPORE UROLOGICAL ASSOCIATION
 SOG HEALTH
 SOLIS BREAST CARE & SURGERY
 SOCIETY FOR MEN'S HEALTH,
 SINGAPORE
 SOUTH EAST CDC
 STRAITS RETAIL PROPERTY
 MANAGEMENT SERVICES PTE LTD
 TAN TOCK SENG HOSPITAL
 TEMASEK FOUNDATION
 THE CANCER CENTRE (SINGAPORE
 MEDICAL GROUP)
 THE NATIONAL UNIVERSITY HOSPITAL
 THOMSON BREAST CENTRE
 THOMSON MEDICAL
 UROHEALTH MEDICAL CLINIC
 WATSONS SINGAPORE

HPV VACCINATION PARTNERS

1 BISHAN MEDICAL CLINIC
 1 MEDICAL TECK GHEE
 18 CLINIC
 57 MEDICAL CLINIC (GEYLANG BAHRU)
 57 MEDICAL CLINIC (YISHUN)
 A LIFE CLINIC PTE LTD
 ACEHEALTH MEDICAL
 ACUMED MEDICAL GROUP (BEDOK)
 ACUMED MEDICAL GROUP (JURONG WEST)
 ACUMED MEDICAL GROUP (RAFFLES)
 ACUMED MEDICAL GROUP (SENGKANG)
 ACUMED MEDICAL GROUP (TAMAN JURONG)
 ACUMED MEDICAL GROUP (TEBAN
 GARDENS)
 ACUMED MEDICAL GROUP (WOODLANDS)
 ADVANTAGE MEDICAL CLINIC (GEYLANG
 EAST)

ADVANTAGE MEDICAL CLINIC (GUTHRIE HOUSE)
AFFINITY MEDICAL CLINIC
AMPM FAMILY CLINIC & SURGERY PTE LTD
ANG MO KIO RAFFLES MEDICAL
ANTEH DISPENSARY PTE LTD.
APPLETREE MEDICAL
ATA MEDICAL CLINIC
BEDOK MEDICAL CENTRE
BELIEF FAMILY CLINIC
BESTMED FAMILY CLINIC & HOMECARE
BISHAN RAFFLES MEDICAL
BLESS MEDICAL CENTRE
BOEY@HOLLAND V FAMILY CLINIC
BOON LAY CORPORATION CLINIC - HEALTHWAY MEDICAL
BRADDELL MEDICAL CLINIC
C K TAN FAMILY CLINIC & SURGERY PTE LTD
CAMRY MEDICAL CENTRE
CAREDOC MEDICAL CLINIC (ANG MO KIO)
CASHEW MEDICAL AND SURGERY
CECILIA FAMILY CLINIC & SURGERY
CHANG CLINIC & SURGERY
CHINATOWN WELLNESS CLINIC
CHONG'S MEDICAL CENTRE
CHUNG & EE MEDICAL CLINIC
CITYHEALTH CLINIC & SURGERY PTE LTD CLINIC 10
CLINIC@COSTA
COMFORT CLINIC & SURGERY
CORNERSTONE MEDICAL
CORNERSTONE MEDICAL BIDADARI
CRAWFURD MEDICAL CENTRE PTE LTD
CRESCENT CLINIC & SURGERY
CREST FAMILY CLINIC PTE LTD
CROSS STREET MEDICAL CLINIC
CROSSROADS FAMILY CLINIC
DA CLINIC @ ANCHORVALE
DA CLINIC @ ANSON
DA CLINIC @ BISHAN
DA CLINIC @ BUKIT BATOK
DA CLINIC @ POTONG PASIR
DA CLINIC @ TAMAN JURONG
DAILY MEDICAL CENTRE
DISTINCT CLINIC BUKIT BATOK BRANCH
DISTINCT CLINIC @ EAST BRANCH
DOVER MEDICAL CENTRE
DR JOYCE & PARTNERS FAMILY CLINIC (SUMANG)
DR JOYCE & PARTNERS FAMILY CLINIC (TOA PAYOH)
DR PANDA MEDICAL CENTRE
DR STANLEY PECK FAMILY CLINIC
DR+ MEDICAL PAINCARE CLINIC
DRS KOO, KOH & ASSOCIATES P.L.
DRS. BAIN & PARTNERS - HARBOUR FRONT
DRS. CHUA & PARTNERS PTE LTD
EASTERN MEDICAL CENTRE
EE CLINIC
EH MEDICAL CLINIC (BUKIT BATOK)
EH MEDICAL CLINIC (WOODLANDS)
EHA CLINIC @ JURONG
EIDWEN FAMILY MEDICINE CLINIC
ELISSA MEDICAL CLINIC
EMMANUEL MEDICAL CLINIC
ETERN MEDICAL CLINIC (FERNVALE PALM)
ETERN MEDICAL CLINIC (PUNGGOL CENTRAL)
ETERN MEDICAL CLINIC (PUNGGOL SUMANG LRT)
ETERN MEDICAL CLINIC (SENGKANG)
EVERHEALTH FAMILY CLINIC AND SURGERY
EVERHEALTH MEDICAL CENTRE
FAIRCARE FAMILY CLINIC (YISHUN)
FAIRCARE FAMILY CLINIC CLEMENTI
FAITH CLINIC (BEDOK)
FAITH CLINIC (BUANG WEST)
FAITH CLINIC (SIMEI)
FAITH CLINIC (TOA PAYOH)
FAITH CLINIC (YISHUN)
FAITH FAMILY CLINIC
FAITH HEALTHCARE (RIVERVALE)
FAITH HEALTHCARE (TAMPINES)
FAMICARE BEDOK CLINIC PTE LTD
FAMILY CARE CLINIC PTE LTD
FAMILY DOCTORS AT 365
FAMILY HEALTHCARE CLINIC & SURGERY
FAMILY HEALTHCARE CLINIC & SURGERY PTE LTD
FAMILY MEDICINE CLINIC CHINATOWN
FERNVALE FAMILY CLINIC
FIRST CARE FAMILY CLINIC & SURGERY
FIRST MEDICAL CLINIC & SURGERY
FOCUS MEDICAL CENTRE
FRASER MEDICAL CENTRE
FRONTIER FAMILY MEDICINE CLINIC
FRONTIER MEDICAL ASSOCIATES (ADMIRALTY)
FRONTIER MEDICAL ASSOCIATES (AMK)
FRONTIER MEDICAL ASSOCIATES (BUANGKOK CRESCENT)
FRONTIER MEDICAL ASSOCIATES (BUKIT BATOK WEST RIDGES)
FRONTIER MEDICAL ASSOCIATES (BUKIT BATOK WEST TERRA)
FRONTIER MEDICAL ASSOCIATES (CANNERRA)
FRONTIER MEDICAL ASSOCIATES (JURONG WEST)
FRONTIER MEDICAL ASSOCIATES (UBI)
FRONTIER MEDICAL ASSOCIATES (WOODLANDS)
FRONTIER MEDICAL ASSOCIATES (YISHUN)
FRONTIER PEOPLE'S CLINIC
GOOD SHEPHERD FAMILY CLINIC
GREENLIFE CLINIC & SURGERY
GSH CLINIC & SURGERY PTE LTD
HEAL MEDICAL CENTRE
HEALTH LINE FAMILY CLINIC AND SURGERY
HEALTH PARTNERS FAMILY CLINIC
HEALTH PARTNERSHIP MEDICAL CENTRE
HEALTHCARE FAMILY CLINIC & SURGERY
HEALTHY MEDICAL FAMILY CLINIC
HEALTHLINK FAMILY CLINIC & SURGERY
HEALTHLINK MEDICAL CLINIC & SURGERY (UPPER ALJUNIED)
HEALTHMARK FAMILY CLINIC COMPASSVALE
HEALTHSPRINGS MEDICAL ASSOCIATES
HEALTHSPRINGS MEDICAL CLINIC & SURGERY
HEALTHWAY MEDICAL (10 SINARANG DRIVE)
HEALTHWAY MEDICAL (30 SEMBAWANG DRIVE)

HEALTHWAY MEDICAL (406 SEMBAWANG DRIVE) - SILVERCROSS
HEALTHWAY MEDICAL (90 HOUGANG)
HEALTHWAY MEDICAL (ANCHORVALE) - SILVERCROSS
HEALTHWAY MEDICAL (ANG MO KIO)
HEALTHWAY MEDICAL (BEDOK)
HEALTHWAY MEDICAL (BLK 101 YISHUN)
HEALTHWAY MEDICAL (BLK 108 HOUGANG)
HEALTHWAY MEDICAL (BLK 177 TOA PAYOH)
HEALTHWAY MEDICAL (BLK 320 ANG MO KIO)
HEALTHWAY MEDICAL (BLK 417 YISHUN)
HEALTHWAY MEDICAL (BLK 461 YISHUN)
HEALTHWAY MEDICAL (BLK 475 CHOA CHU KANG)
HEALTHWAY MEDICAL (BLK 503 TAMPINES)
HEALTHWAY MEDICAL (BLK 534 CHOA CHU KANG)
HEALTHWAY MEDICAL (BLK 690 JURONG WEST)
HEALTHWAY MEDICAL (BLK 710 TAMPINES)
HEALTHWAY MEDICAL (BLK 717 WOODLANDS)
HEALTHWAY MEDICAL (BLK 721 ANG MO KIO)
HEALTHWAY MEDICAL (BLK 748 YISHUN)
HEALTHWAY MEDICAL (BLK 888 WOODLANDS)
HEALTHWAY MEDICAL (BLK 960 JURONG WEST)
HEALTHWAY MEDICAL (BUKIT BATOK STREET 11)
HEALTHWAY MEDICAL (BUKIT BATOK WEST AVE 8)
HEALTHWAY MEDICAL (CLEMENTI WEST)
HEALTHWAY MEDICAL (ELIAS)
HEALTHWAY MEDICAL (FAJAR)
HEALTHWAY MEDICAL (SUNGEKONG TIGA)
HEALTHWAY MEDICAL (PUNGGOL FIELD)
HEALTHWAY MEDICAL (RIVERVALE)
HEALTHWAY MEDICAL (SHENTON WAY)
HEALTHWAY MEDICAL (TAMPINES)
HEALTHWAY MEDICAL (TOWNER ROAD)
HEALTHWERKZ MEDICAL CENTRE
HEALTHWERKZ MEDICAL CENTRE @ CENTRUM
HEARTLAND HEALTH (TELOK BLANGAH)
HEARTLANDHEALTH (19 TOA PAYOH LORONG)
HEARTLANDHEALTH (66 TOA PAYOH LORONG)
HEARTLANDHEALTH (BEDOK)
HEARTLANDHEALTH (BUKIT BATOK)
HEARTLANDHEALTH (CIRCUIT ROAD)
HEARTLANDHEALTH (JURONG WEST)
HEARTLANDHEALTH (REDHILL)
HEARTLANDHEALTH (TAMPINES)
HEARTLANDHEALTH (UPPER CHANGI)
HEARTLANDHEALTH (WHAMPOA)
HIDOC MEDICAL CENTRE
HILL SPRING MEDICAL
HILLION MALL RAFFLES MEDICAL
HL FAMILY CLINIC & SURGERY PTE LTD
HOLISTIC CARE FAMILY CLINIC
ICARE MEDICAL AND WELLNESS CLINIC
I-HEALTH MEDICAL CLINIC (BENDEMEER)
I-HEALTH MEDICAL CLINIC (YISHUN)
INSPIRE MEDICAL CLINIC (JALAN BATU)
INTEMEDICAL 24 HOUR CLINIC
INTEMEDICAL KOVAN
INTEMEDICAL POTONG PASIR
ISLAND FAMILY CLINIC (ANCHORVALE)
ISLAND FAMILY CLINIC (BEDOK)
ISLAND MEDICAL CLINIC
JANE & LEE SEMBAWANG FAMILY CLINIC
JOY FAMILY CLINIC
JOYHEALTH MEDICAL CLINIC & SURGERY
K2 MEDICAL CLINIC @ SIMEI
KAI MEDICAL CLINIC
KALLANG BAHRU FAMILY CLINIC PTE LTD
KAO & TAN FANVALE MEDICAL CENTRE & SURGERY PTE LTD
KARRI FAMILY CLINIC
KCS MEDICAL CENTRE PTE LTD
KEAT HONG FAMILY MEDICINE CLINIC
KEYSTONE FAMILY CLINIC
KING GEORGE'S MEDICAL CLINIC PTE LTD
KINGSWAY MEDICAL CLINIC
L & H POLYCLINIC AND SURGERY
LAKESIDE FAMILY MEDICINE CLINIC
LAVENDER MEDICAL CLINIC & SURGERY PTE LTD
LC CLINIC MEDICAL SURGERY AESTHETICS
LEE & KOH FAMILY CLINIC
LEE & TAN FAMILY CLINIC AND SURGERY
LEE CLINIC (LEE KAM WAI PTE LTD)
LEE FAMILY CLINIC PTE LTD
LIFE FAMILY CLINIC (CHOA CHU KANG)
LIFECARE FAMILY CLINIC
LILY AW PASIR RIS FAMILY CLINIC & SURGERY
LIM CLINIC AND SURGERY
LITTLE CROSS FAMILY CLINIC
LOH & LOH CLINIC & SURGERY
M LAM CLINIC
MACPHERSON MEDICAL CLINIC
MAKE-WELL FAMILY CLINIC & SURGERY
MANADR CLINIC
MANDARIN MEDICAL CENTRE
MARINE PARADE CLINIC
MARTIN MEDICAL CENTRE
MAY MEDICAL CLINIC & SURGERY PTE LTD
MEDIHEALTH BISHAN CLINIC & SURGERY
MEDINA MEDICAL CENTRE
MEDIPOINT MEDICAL CENTRE (PONGGOL BRANCH)
MEDVIEW CLINIC & SURGERY
MEDSTAR MEDICAL CLINIC & SURGERY
MERIDIAN MEDICAL CENTRE
MOUNT ALVERNA OUTREACH MEDICAL CLINIC
MY FAMILY CLINIC (ANCHORVALE)
MY FAMILY CLINIC (ANGSANA BREEZE @ YISHUN)
MY FAMILY CLINIC (CHOA CHU KANG)
MY FAMILY CLINIC (HOUGANG CENTRAL)
MY FAMILY CLINIC (PIONEER)
MY FAMILY CLINIC (PUNGGOL CENTRAL)
MY FAMILY CLINIC (RIVERVALE)
MY FAMILY CLINIC (ST GEORGE)
MY FAMILY CLINIC (TOA PAYOH)
MY FAMILY CLINIC (WOODLANDS GLEN)
NEOH AND ONG MEDICAL CLINIC
NEPTUNE HEALTHCARE MEDICAL AND SURGERY
NEW HEALTH FAMILY CLINIC
NEW TOWN CLINIC PTE LTD
NEWLIFE FAMILY CLINIC & SURGERY

NORTHEAST MEDICAL GROUP (BEDOK)
NORTHEAST MEDICAL GROUP (BUKIT BATOK)
NORTHEAST MEDICAL GROUP (BUONA VISTA)
NORTHEAST MEDICAL GROUP (KALLANG)
NORTHEAST MEDICAL GROUP (RAFFLES PLACE)
NORTHEAST MEDICAL GROUP (SENGKANG)
NORTHEAST MEDICAL GROUP (SIMEI)
NORTHEAST MEDICAL GROUP (TAMPINES)
NORTHLINE (WOODLANDS) CLINIC
NORWOOD MEDICAL CLINIC
NTUC HEALTH FAMILY MEDICINE CLINIC
NUTRAMED CLINIC
OC MEDICAL RAFFLES PLACE
ONECARE CLINIC BUKIT BATOK MRT
ONECARE CLINIC ANG MO KIO
ONECARE CLINIC BEDOK MRT
ONECARE CLINIC BISHAN
ONECARE CLINIC BOON LAY
ONECARE CLINIC BUKIT BATOK
ONECARE CLINIC BUKIT BATOK EAST
ONECARE CLINIC BUKIT BATOK WEST
ONECARE CLINIC BUKIT GOMBAK MRT
ONECARE CLINIC BUKIT PANJANG
ONECARE CLINIC BUKIT PANJANG BUS INTERCHANGE
ONECARE CLINIC CANNERRA
ONECARE CLINIC CHOA CHU KANG
ONECARE CLINIC CLEMENTI
ONECARE CLINIC FERNVALE
ONECARE CLINIC HOUGANG
ONECARE CLINIC HOUGANG AVENUE 8
ONECARE CLINIC JUNGKONG TIGA
ONECARE CLINIC JURONG WEST
ONECARE CLINIC KEAT HONG LRT
ONECARE CLINIC LOYANG
ONECARE CLINIC MARINE PARADE
ONECARE CLINIC PUNGGOL PLAZA
ONECARE CLINIC SUNGANG
ONECARE CLINIC SENJA
ONECARE CLINIC SERANGOON NORTH
ONECARE CLINIC TAMPINES
ONECARE CLINIC TAMPINES MRT
ONECARE CLINIC TIONG BAHRU
ONECARE CLINIC WOODLANDS
ONECARE CLINIC YISHUN
OUR FAMILY CLINIC AND SURGERY PTE LTD
OUR WOODLEIGH FAMILY CLINIC
PACIFIC FAMILY CLINIC
PANCARE MEDICAL (HOUGANG)
PANCARE MEDICAL (JURONG EAST)
PANCARE MEDICAL (SERANGOON)
PANCARE MEDICAL CLINIC
PANHEALTH FAMILY CLINIC (HOUGANG)
PANHEALTH FAMILY CLINIC (SUMANG)
PARKWAY SHENTON CLINIC (BUANGKOK)
PASIR RIS CLINIC & SURGERY
PEACE FAMILY CLINIC
PHOON CLINIC AND SURGERY
PHYSICIANS PRACTICE FAMILY MEDICAL CENTER
PLATINUM MEDICAL CENTRE
PONDICHERRY MEDICAL CLINIC
PREMIER CLINIC & SURGERY PTE LTD
PROHEALTH 24-HOUR MEDICAL CLINIC
PROHEALTH MEDICAL GROUP @ BUANGKOK PTE LTD
PROHEALTH MEDICAL GROUP @BUKIT BATOK PTE LTD
PROHEALTH MEDICAL GROUP @ FERNVALE PTE LTD
PROHEALTH MEDICAL GROUP @ HOUGANG PTE LTD
PROHEALTH MEDICAL GROUP @LRT FANVALE PTE LTD
PROHEALTH MEDICAL GROUP @ PUNGGOL DAMAI PTE LTD
PROHEALTH MEDICAL GROUP @ PUNGGOL NORTHSORE PTE LTD
PROHEALTH MEDICAL GROUP @ PUSKOP SPECTRA PTE LTD
PROHEALTH MEDICAL GROUP @TAMAN JURONG PTE LTD
PROHEALTH MEDICAL GROUP @ TAMPINES PTE LTD
PRO-LIFE MEDICAL ASSOCIATES
PROVIDENCE CLINIC @ NOVENA
PROVIDENCE CLINIC @ HILLFORD
PRUDENCE FAMILY CLINIC
PSALMS FAMILY CLINIC PTE LTD
PULSE CLINIC PTE LTD
RAFFLES MEDICAL (RAFFLES PLACE)
RAFFLES MEDICAL (YEW TEE POINT)
RAFFLES MEDICAL @ NEX
RAFFLES MEDICAL @ RIVERVALE MALL
RAFFLES MEDICAL CAPITASKY
RAFFLES MEDICAL CHANGI CITY POINT
RAFFLES MEDICAL CLEMENTI
RAFFLES MEDICAL GROUP @ SINGAPORE LAND TOWER CLINIC
RAFFLES MEDICAL GROUP TAMPINES 1
RAFFLES MEDICAL HILLION MALL
RAFFLES MEDICAL HOUGANG
RAFFLES MEDICAL JURONG EAST
RAFFLES MEDICAL JURONG POINT
RAFFLES MEDICAL LOT 1
RAFFLES MEDICAL TOA PAYOH
RAFFLES MEDICAL WHITESANDS
REDWOOD@TPY CLINIC & SURGERY PTE LTD
RUBY MEDICAL CENTRE PTE LTD
S1 MEDICAL CLINIC
SHALOM MEDICAL GROUP
SHENTON CLINIC
SILVER CROSS MEDICAL (HOLLAND)
SILVER CROSS MEDICAL (JURONG WEST)
SILVER CROSS MEDICAL (BUKIT TIMAH)
SILVER CROSS MEDICAL (YISHUN)
STERLING FAMILY CLINIC
SUNCARE MEDICAL CLINIC (SENGKANG WEST)
T MEDICAL CLINIC (CANNERRA WALK)
T MEDICAL CLINIC (CITY GATE)
T MEDICAL CLINIC (KALLANG)
TAI SENG CLINIC
TAN & YIK CLINIC & SURGERY
TAN MEDICAL CLINIC PTE LTD
TC FAMILY CLINIC PTE LTD
TEMASEK MEDICAL CENTRE (BUKIT BATOK)
TEMASEK MEDICAL CENTRE (SEMBAWANG)
TEMASEK MEDICAL CENTRE (WOODLANDS)
TEMASEK MEDICAL CENTRE (YEW TEE)

TEXTILE CENTRE CLINIC
THE BIDADARI CLINIC
THE CHELSEA CLINIC (ROCHESTER)
THE FLAME TREE MEDICAL CENTRE
THE GOOD CLINIC PTE LTD
THE GOOD LIFE MEDICAL CENTRE
THE ICLINIC
THE OLIVE TREE FAMILY CLINIC & SURGERY PTE LTD
TRINITY MEDICAL & AESTHETIC CLINIC
TRINITY MEDICAL CLINIC (DOVER)
TRINITY MEDICAL CLINIC (JURONG)
TRUE MEDICAL CLINIC PAYA LEBAR QUARTER
TRUE MEDICAL CLINIC TAMPINES WEST
UBI FAMILY CLINIC & SURGERY
UNITED HEALTH FAMILY CLINIC & SURGERY
UNITED MEDICAL PRACTITIONERS (BLOCK 139)
UNITED MEDICAL PRACTITIONERS (BLOCK 201B)
VICTORIA MEDICAL HOUSE
VIVA MEDICAL CLINIC (BLK 450A TAMPINES)
VIVA MEDICAL GROUP (BLK 519A TAMPINES)
VIVA MEDICAL GROUP (CANNERRA PLAZA)
VIVA MEDICAL GROUP (WESTSIDE)
WEST COAST CLINIC & SURGERY (CLEMENTI WEST) PTE LTD
WOODLANDS CLINIC
YANG & YAP CLINIC & SURGERY
YAO MEDICAL CLINIC
YIM MEDICAL CENTRE ADMIRALTY MRT
YIO CHU KANG MRT CLINIC PTE LTD

FOOD PACK SPONSORSHIP

ACCLIVIS TECHNOLOGIES AND SOLUTIONS PTE. LTD
ASTRAZENECA
CHURCH OF ST. IGNATIUS
MOTOROLA SOLUTIONS
PACIFIC INTERNET (S) PTE. LTD
SINGAPORE BREST SURGERY CENTER PTE LTD
T-TOUCH HOUSE OF GRACE

FIT KIT DISTRIBUTION PARTNERS

ALEXANDRA HOSPITAL
C3A ALJUNIED
CURASIA
EU YAN SANG
FEM SUGERY @ MACPHERSON
FRONTIER HEALTHCARE
GUARDIAN HEALTH AND BEAUTY
INTERNATIONAL CANCER SPECIALIST
NATIONAL HEALTHCARE GROUP POLYCLINICS
NATIONAL UNIVERSITY HEALTH SYSTM - CAREHUB
NATIONAL UNIVERSITY HOSPITAL
NATIONAL UNIVERSITY POLYCLINICS
NG TENG FONG GENERAL HOSPITAL (NTFGH)
NTUC HEALTH FAMILY MEDICINE CLINIC @ SERANGOON
NUHEALTH
NUHS PRIMARY CARE NETWORK
NUS UNIVERSITY HEALTH CENTRE
SINGAPORE THONG CHAI MEDICAL INSTITUTION
SINGHEALTH POLYCLINICS
ST LUKE COMMUNITY CLINIC
TJ CHI SINGAPORE
UNITY PHARMACIES
WELCIA-BHG

SCREENING PARTNERS

ALJUNIED X-RAY CENTRE
ARDENNES HEALTH
BOSTON IMAGING (RADIOLOGY) AND DIAGNOSTIC PTE LTD
CHANGI GENERAL HOSPITAL
CRAWFURD MEDICAL
DIAGNOSTIC RADIOLOGY AT SINGHEALTH POLYCLINIC
FARRER PARK HOSPITAL - HEALTHCONNECTION MEDICAL CLINIC
FEM SURGERY
FUSION MEDICAL GROUP PTE LTD
GLENAGLES HOSPITAL
HEALTHWAY SCREENING
KHOO TECK PUAT HOSPITAL
LUMA WOMEN'S IMAGING CENTRE
MEDI-RAD ASSOCIATES LTD
MHC IMAGING CENTRE
MINMED GROUP
MOUNT EUGENIE GENERAL HOSPITAL
NATIONAL HEALTHCARE GROUP DIAGNOSTICS
NATIONAL UNIVERSITY HEALTH SYSTEM DIAGNOSTICS
NG TENG FONG GENERAL HOSPITAL
PARKWAY EAST HOSPITAL
PARKWAY SHENTON PTE LTD
RAFFLES DIAGNOSTICA
RAFFLES HOSPITAL
SATA COMMHEALTH
SENGKANG GENERAL HOSPITAL
SINGAPORE GENERAL HOSPITAL
SINGHEALTH POLYCLINICS
STARMED SPECIALIST CENTRE
TAN TONG SENG HOSPITAL
THOMSON IMAGING CENTRE
THOMSON MEDICAL CENTRE

FIT50 SCREENING PARTNERS

EU YAN SANG
GUARDIAN HEALTH AND BEAUTY
SINGHEALTH POLYCLINICS
UNITY FAMILY MEDICINE CLINIC
WATSON'S SINGAPORE
NATIONAL UNIVERSITY HEALTH POLYCLINICS

Thank you to all our Committee Members, volunteers, donors, partners and supporters for your invaluable contribution towards SCS. It warms our hearts that you, too, believe that no one fights cancer alone. Your unwavering dedication and commitment to our cause help minimize cancer and maximize lives for our warriors, survivors and caregivers. Once again, thank you for everything.

To see the lists of volunteers involved in various SCS committees and all our supporters, please visit www.singaporecancersociety.org.sg.

SINGAPORE CANCER SOCIETY HEAD OFFICE

30 Hospital Boulevard,
#16-02 NCCS Building, Singapore 168583
Tel: 1800-727-3333
Fax: 6221 9575

Opening hours:
Monday to Friday, 8.30am to 6pm

SCS CANCER SCREENING CLINIC AT BISHAN

Junction 8 Office Tower, 9 Bishan Place,
#06-05 Singapore 579837
Tel: 1800-727-3333
Fax: 6499 9140

Opening hours:
Monday to Friday, 8.30am to 6pm
Saturday, 8.30am to 4pm

SCS SURVIVORSHIP CENTRE

6 Woodlands Square
Woods Square Tower 2, #09-01
Singapore 737737

Opening hours:
Monday to Friday,
9am to 12pm
2pm to 5pm

SCS CANCER REHABILITATION CENTRE @ JURONG MEDICAL CENTRE

60 Jurong West Central 3, Level 3,
Singapore 648346

SCS SATELLITE OFFICE

National University Cancer Institute, Singapore
Singapore National University Hospital
Medical Centre 1, Level 9, Along Corridor D
Lower Kent Ridge Road
Singapore 119074
Tel: 6772 5463
Fax: 6268 5917

Opening hours:
Monday to Friday,
9.30am to 5pm

SCS CANCER REHABILITATION CENTRE

30 Hospital Boulevard, #16-02
NCCS Building Singapore 168583
Tel: 6661 0595

Opening hours:
Monday to Friday,
8.30am to 1pm
2pm to 6pm

SCAN TO DONATE

All proceeds will be channelled to support
programmes and services conducted by the
Singapore Cancer Society.



SINGAPORE CANCER SOCIETY

UEN / IPC Number: S65SS0033F

Banker: DBS Bank Ltd

Statutory Auditor: RSM SG Assurance LLP

Internal Auditor: BDO Advisory Pte. Ltd.

Legal Firm: RHTLaw Asia

Honorary Legal Counsel: Mr Ang I-Ming

Registered Address: 30 Hospital Boulevard, #16-02 NCCS Building, Singapore 168583

Hotline: 1800-SCS-3333

Email: enquiry@singaporecancersociety.org.sg

Website: <https://www.singaporecancersociety.org.sg/>



SINGAPORE CANCER SOCIETY

enquiry@singaporecancersociety.org.sg

www.singaporecancersociety.org.sg

Hotline: 1800-SCS-3333

FOLLOW US ON SOCIAL MEDIA



@sgcancersociety